



Quality & Performance

2014 BUYERS GUIDE

INTRODUCTION

When the hallmark of a business is the quality and dependability of its products, there is no time to rest on past accomplishments. In twenty years, we at QuickCar Racing Products have seen our product line and our company grow by leaps and bounds. In order to continue our success, we remain dedicated to listening to customers' ideas for new products, saving them money, and improving the performance and life expectancy of their race cars. QuickCar Racing Products: Quality and performance since 1992.



New Products2-5

Wiring Kits6-7

Battery Cable Kits8-9

Electrical Accessories10-11

Ignition System Accessories12-13

Ignition Control Panels.....14-21

Sprint Car Gauge Panels.....22-24

Tachometers.....25

Gauge Panels26-43

Gauge And Switch Panel Accessories44-45

Tire Gauges46-47

Chassis Components48-49

Steering Wheels And Accessories50-51

Chassis Set-Up52-54

Brake System Accessories55

Tire Management.....56-57

Timing Systems.....58-60

Spark Plug Wires.....61

Cooling Systems.....62-63

Carburetor Accessories.....64

Safety Equipment65-67

Tools68-69

QuickCar Extras.....70-72

Kart Products73

Decals, Shirts And Hats74

Wiring Harness Measurement Guide75

Product Index.....76-77

Part Number Index.....78-79

Terms And Conditions80



Battery Charging Posts With Mounting Bracket

Machined aluminum, black anodized brackets offer convenient, remote battery charging access. Pre-drilled brackets are offered in flat version, for surface mounting, or 90° bent for under panel mounting. Sold complete with (1) red and (1) black battery charging post.

57-718	Flat Mounting Bracket With Charging Posts
57-719	Bent Mounting Bracket With Charging Posts



Dual Pickup Distributor Wiring Harness 50-2034



Universal Weather Pack wiring harness is designed for cars using a single ignition box and a dual magnetic pickup distributor, or crank trigger/distributor combination. Must be used with 50-1714 ignition panel.

Battery Cable Boots 57-604

May be used for covering battery terminals on small terminal batteries or starter solenoid connections. Boots may be used with up to 2-gauge cable. Sold as a pair, (1) red and (1) black.



Battery Disconnect Boots

Protects battery disconnect terminals from being accidentally shorted. Sold per pair, boots may be used with up to 2-gauge cable.

57-601	Red, Pair
57-602	Black, Pair



Crane Ignition/Asphalt Late Model Wiring Harness 50-2051



Specialized wiring harness is designed for asphalt late models using a Crane 6700-6701 Ignition system. Sold complete with wiring and connectors.

Ignition Control Panel Single Box/Dual Trigger 50-1714



Ignition control panel includes a crossover switch for use between distributor pickups, or between the distributor and crank trigger. Often used with two ignition timing settings with one for "de-tuning" the engine for slick track conditions. Requires 50-2034 wiring harness.

Crane Ignition Distributor Adapter 50-2008

Special wiring harness adapts Crane distributors that use a 3-pin Deutsch connector to 2-pin Weather Pack connector.



Sprint Gauge Panels



Easy to mount, lightweight aluminum panels feature QuickCar 2-5/8" diameter oil pressure and water temperature gauges. Deluxe Sprint panel includes a double pole mag switch, low oil pressure warning light and 9-volt battery for self-sufficient power. All panels are sold complete with Quick fasteners.

61-6005-1	Deluxe Sprint Gauge Panel, 9-Volt Powered
61-6006	Pro Sprint Gauge Panel, Vertical Mount

Ultra-Nite Sprint Car Gauge Panels



NEW PRODUCTS

Compact, lightweight gauge panels are fitted with Auto Meter 2-5/8" diameter Ultra-Nite glow-in-the-dark oil pressure and water temperature gauges. Gauges are mounted in aluminum or carbon fiber panels using shockproof rubber grommets. Available Deluxe gauge panels include 9-volt battery power for self-sufficient power supply for warning light and toggle switch. All panels are sold complete with Quick fasteners.

61-0604	Ultra-Nite Pro Sprint Panel, Aluminum Panel
61-0605	Ultra-Nite Deluxe Sprint Panel, Aluminum Panel, 9-Volt Powered
61-0606	Ultra-Nite Vertical Mount Panel, Aluminum Panel
61-0704	Ultra-Nite Pro Sprint Panel, Carbon Fiber Panel
61-0705	Ultra-Nite Deluxe Sprint Panel, Carbon Fiber Panel, 9-Volt Powered

Fuel Pressure Isolator 61-300

Specialized isolator eliminates the hazards associated with driver's compartment mounted fuel pressure gauges. Typically mounted to the engine side fire-wall, isolator is plumbed with the pressure source on the inlet side and an anti-freeze/water mix on the outlet, which connects to the gauge. Compatible with gasoline, alcohol or methanol fuels, isolator is manufactured from black anodized, 6061-T6 billet aluminum for durability.

Capable of monitoring pressures up to 80 PSI, unit is sold complete with -4AN adapter fittings, mounting bracket and necessary hardware.



Sleeved Race Spark Plug Wire



Premium quality spark plug wire offers quick energy transfer, less than 40 ohms/ft. of resistance, high EMI (Electro Magnetic Interference) and RFI (Radio Frequency Interference) suppression. Flexible, high strength wire is constructed using a Kevlar core and nickel-copper alloy wound conductor that is covered with two full layers of silicone, resulting in a 11.5mm O.D. silicone impregnated fiberglass sleeving adds 1,400° F. of heat resistance. High temperature silicone boots resist temperatures up to 600° F., while the posi-snap terminals provide a secure connection. Cylinder numbers are labeled on both ends. Compatible with most ignition systems.

Oil Temperature Manifold 61-755

CNC-machined from rigid, billet aluminum, manifold includes -10AN O-ring boss inlet and outlet ports, and a 3/8" female NPT port for an oil temperature probe. Black anodized finished.



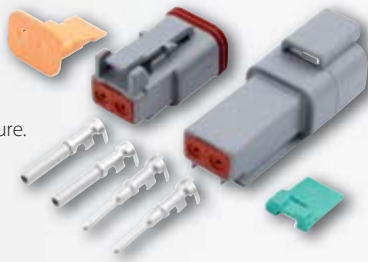
Replacement Warning Light Kit 61-706

Kit includes (1) red, (1) blue, (1) amber and (1) green replacement warning lights.



Deutsch Connectors

Durable, precision connectors include plastic male and female housing ends with indexed locks to securely lock, while sealing out dirt and moisture. Kits are sold complete with terminals, silicone rubber seals and strong crimp tabs for 12-18 gauge wires.



71-322	Deutsch Connector Kit, 2-Pin
71-332	Deutsch Connector Kit, 3-Pin
71-342	Deutsch Connector Kit, 4-Pin
71-362	Deutsch Connector Kit, 6-Pin

40-100	SB Chevy Wire Set, Red, 24" Coil Wire
40-300	SB Chevy Wire Set, Black, 24" Coil Wire
40-150	SB Chevy Wire Set, Red, Without Coil Wire
40-350	SB Chevy Wire Set, Black, Without Coil Wire
40-500	GM LS1 Wire Set, Red
40-700	GM LS1 Wire Set, Black
40-121	Red Coil Wire, 12" HEI/HEI
40-123	Black Coil Wire, 12" HEI/HEI
40-125	Red Coil Wire, 12" HEI/Socket
40-127	Black Coil Wire, 12" HEI/Socket
40-181	Red Coil Wire, 18" HEI/HEI
40-183	Black Coil Wire, 18" HEI/HEI
40-185	Red Coil Wire, 18" HEI/Socket
40-187	Black Coil Wire, 18" HEI/Socket
40-241	Red Coil Wire, 24" HEI/HEI
40-243	Black Coil Wire, 24" HEI/HEI
40-245	Red Coil Wire, 24" HEI/Socket
40-247	Black Coil Wire, 24" HEI/Socket
40-361	Red Coil Wire, 36" HEI/HEI
40-363	Black Coil Wire, 36" HEI/HEI
40-365	Red Coil Wire, 36" HEI/Socket
40-367	Black Coil Wire, 36" HEI/Socket
40-421	Red Coil Wire, 42" HEI/HEI
40-423	Black Coil Wire, 42" HEI/HEI
40-425	Red Coil Wire, 42" HEI/Socket
40-427	Black Coil Wire, 42" HEI/Socket

Aluminum Suspension Tubes



Manufactured in the USA from rigid, 6061 aluminum, QuickCar Suspension Tubes are up to 35% stronger than traditional hex or round units. Suspension tubes include precision machined ends, corrosion resistant black anodized finish and identification on the left hand threaded end. Unique design allows easy adjustments by hand or with a wrench. Choose from 1-1/8" O.D. with 5/8" threads, or 1-1/4" O.D. with 3/4" threads.

1-1/8" O.D. - 5/8" Threads		1-1/8" O.D. - 5/8" Threads		1-1/8" O.D. - 5/8" Threads	
62-070	7"	62-150	15"	62-230	23"
62-075	7.5"	62-155	15.5"	62-235	23.5"
62-080	8"	62-160	16"	62-240	24"
62-085	8.5"	62-165	16.5"	62-280	28"
62-090	9"	62-170	17"	62-457	45.7"
62-095	9.5"	62-175	17.5"	62-465	46.5"
62-100	10"	62-180	18"	62-477	47.7"
62-105	10.5"	62-185	18.5"	62-480	48"
62-110	11"	62-190	19"	62-487	48.7"
62-115	11.5"	62-195	19.5"	62-490	49"
62-120	12"	62-200	20"	62-500	50"
62-125	12.5"	62-205	20.5"	62-510	51"
62-130	13"	62-210	21"	62-600	72"
62-135	13.5"	62-215	21.5"		
62-140	14"	62-220	22"		
62-145	14.5"	62-225	22.5"		

1-1/4" O.D. - 3/4" Threads		1-1/4" O.D. - 3/4" Threads		1-1/4" O.D. - 3/4" Threads	
75-070	7"	75-165	16.5"	75-280	28"
75-075	7.5"	75-170	17"	75-290	29"
75-080	8"	75-175	17.5"	75-300	30"
75-085	8.5"	75-180	18"	75-310	31"
75-090	9"	75-185	18.5"	75-320	32"
75-095	9.5"	75-190	19"	75-330	33"
75-100	10"	75-195	19.5"	75-340	34"
75-105	10.5"	75-200	20"	75-350	35"
75-110	11"	75-205	20.5"	75-360	36"
75-115	11.5"	75-210	21"	75-370	37"
75-120	12"	75-215	21.5"	75-380	38"
75-125	12.5"	75-220	22"	75-390	39"
75-130	13"	75-225	22.5"	75-400	40"
75-135	13.5"	75-230	23"	75-410	41"
75-140	14"	75-235	23.5"	75-420	42"
75-145	14.5"	75-240	24"	75-430	43"
75-150	15"	75-250	25"	75-440	44"
75-155	15.5"	75-260	26"	75-600	72"
75-160	16"	75-270	27"		

NEW PRODUCTS

Double Ended Suspension Tube Wrench 66-6275

Heavy duty steel, double ended wrench allows performing quick adjustments to QuickCar 1-1/8" or 1-1/4" O.D. suspension tubes.



Torque Absorber 66-400



Now offered in an intermediate, 13" length version with three interior biscuits. Track-proven to increase forward bite out of the turns with sustained traction down the straightaway, QuickCar's torque absorber is IMCA-legal and lighter than spring style units. CNC-machined unit features an internal brass bushing and grease fittings to eliminate any possibility of bind, while the specially-threaded cap allows easy biscuit changes. Softer or harder durometer biscuits may be purchased separately for tuning purposes.

Suspension Tube Ruler 66-100

Measure nearly any suspension component fitted with rod ends, including suspension tubes, tie rods, etc., quickly and precisely. Black powder coated ruler includes a locking thumb screw and provides precise measurements up to 36". Sold complete with aluminum adapters to measure components with 1/2", 5/8" or 3/4" rod ends. Optional adapters allow measuring parts with 1/4", 5/16" or 3/8" rod ends.



66-105	Ruler Adapters, Allows Measuring Components With 1/4", 5/16" Or 3/8" Rod Ends
66-106	Ruler Adapters, Allows Measuring Components With 1/2", 5/8" Or 3/4" Rod Ends (Included With 66-100)

Torque Absorber Biscuit Tuning Kit 66-508

Engineered for chassis tuning purposes, QuickCar's Torque Absorber kit includes (2) each of different durometer biscuits; blue (extra soft), yellow (soft), red (medium) and black (hard).



QuickCar Racing Products has set the performance racing industry standard for battery cables and wiring. Our fine-stranded, rope-lay copper construction wire offers the absolute best in current carrying capabilities, while the 220°F.+ insulation can withstand the high temperatures and fluids common to racing. QuickCar offers a complete line of battery cable kits and wiring accessories that are reliable, durable and affordable.

Premium 4-Gauge Wiring Kit 50-232

Premium 4-gauge wiring kit includes the 50-020 ignition control panel, 4 AWG battery cable, wiring harness, 55-009 master disconnect switch, solenoid, top mount battery terminals, ring terminals, heat shrink tubing and wire clamps.



WIRING KITS

4-Gauge Wiring Kit 50-231

QuickCar's 4-gauge wiring kit is sold with the 50-022 ignition control panel, 4 AWG battery cable, wiring harness, 55-009 master disconnect switch, solenoid, top mount battery terminals, ring terminals, heat shrink tubing and wire clamps.



2-Gauge Wiring Kit 50-230

Heavy duty, 2-gauge wiring kit includes the 50-053 ignition control panel, 2 AWG battery cable, wiring harness, 55-009 master disconnect switch, solenoid, top mount battery terminals, ring terminals, heat shrink tubing and wire clamps.



Race Wire

Used by many racing teams and chassis builders. Constructed with very fine stranded rope-lay copper wire for high flexibility and superior power flow with insulation capable of withstanding extreme temperatures.

2-Gauge		8-Gauge	
57-101	Red, Per Ft.	57-240	Red, Per Ft.
57-102	Red, 125' Roll	57-2401	Red, 10'
57-103	Black, Per Ft.	14-Gauge	
57-104	Black, 125' Roll	57-201	Red, Per Ft.
4-Gauge		57-2011	Red, 10'
57-091	Red, Per Ft.	57-203	Black, Per Ft.
57-092	Red, 125' Roll	57-2031	Black, 10'
57-093	Black, Per Ft.	57-236	White, Per Ft.
57-094	Black, 125' Roll	57-2361	White, 10'



Clear Shielded Distributor Wire 57-200

Specially shielded, three wire harness protects the trigger signal from the distributor from EMI (Electro Magnetic Interference). Sold per foot.

Power Rings

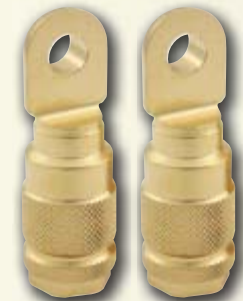
Heavy duty, gold plated copper ring terminals are sold in pairs with heat shrink tubing.

2-Gauge	
57-540	5/16"
57-550	3/8"
4-Gauge	
57-520	5/16"
57-525	1/4"
57-530	3/8"
8-Gauge	
57-490	3/8" Open
12-Gauge	
57-450	#6
57-470	#10
57-944	Female Quickslide



Machined Interlock Power Rings 57-410

These 24k gold-plated solid brass connectors offer the best in conductivity and resistance to corrosion. Accommodates two or four AWG wire. Sold in pairs.



Heat Shrink Tubing

Sold each.

57-440	Small
57-441	8 AWG
57-443	4 AWG
57-445	2 AWG



Impact Crimper 64-020

Excellent for crimping standard power rings onto battery cables for permanent termination.





57-009

Drag Kit 57-012

QuickCar Drag Race Kit contains all you need to wire a dual battery system. The kit includes 25 feet of 2 gauge red power cable, 8 feet of 2 gauge black ground cable, 2 pair of nickel plated brass marine type battery terminals, 14 gold-plated power ring terminals and heat shrink tubing.



Battery Cable Kits

QuickCar Battery Cable Kits includes 15 feet of red power cable, 2 feet of black ground cable, one pair of nickel-plated marine style battery terminals, nine gold plated power ring terminals and heat shrink tubing. All battery cables are made from copper.

57-008	4-Gauge, Side Mount
57-009	4-Gauge, Top Post Mount
57-010	2-Gauge, Top Post Mount
57-011	2-Gauge, Side Mount
57-014	4-Gauge, Top Post Mount, Includes Master Disconnect Switch

Battery Ground Cables

Pre-terminated with gold-plated copper terminals for maximum conductivity, ground cables are 18" in length. Choose from 2- or 4-gauge.

57-1809	4-Gauge
57-1810	2-Gauge



Side Mount Battery Terminals 57-660

Battery terminals are 24k gold plated for optimum conductivity. Side mount terminals allow you to attach cables to GM style side mount batteries. Comes with nut and lock washers for 5/16" studs. Long stud allows use of multiple or thick power ring connectors. Sold in pairs.



Top Mount Battery Terminals

Made from solid brass and 24k gold or nickel plated for optimum conductivity, terminals allow attaching battery cables to top mount batteries. The 57-620 has two extra ports for accessory wires. Sold in pairs.

57-610	Brass/Nickel Plated Terminals
57-620	Brass/Gold Plated Terminals
57-607	Battery Terminal Covers

Remote Jumper Posts



Provides remote access to the battery. Terminals have insulated covers to prevent accidental contact from parts with opposing polarity.

57-701	Red
57-702	Black
57-703	Red And Black, Pair

Battery Cable Boots 57-604



May be used for covering battery terminals on small terminal batteries or starter solenoid connections. Boots may be used with up to 2-gauge cable. Sold as a pair, (1) red and (1) black.

Charging Post Mounting Brackets

Charging post brackets allow 57-703 remote charging posts to be professionally mounted. Machined aluminum brackets are black anodized and offered in flat, for mounting to a flat surface, or bent for mounting on firewall or inside of trunk. Brackets have two holes to accept red and black remote charging posts. Brackets may also be purchased complete with charging posts.

57-708	Flat Mounting Bracket
57-709	Bent Mounting Bracket
57-718	Flat Mounting Bracket With Charging Posts
57-719	Bent Mounting Bracket With Charging Posts



BATTERY ACCESSORIES



57-705

57-706

57-704



50-513



50-514

Battery Quick Disconnects

The battery cable quick disconnect enables you to change out a battery fast. Also used for battery charging and anywhere a quick disconnect is helpful. Sold individually, complete with required connectors. Three are generally used; (1) for the battery end, (1) for the car end and (1) for a spare battery or battery charger.

57-705	2 AWG
57-706	4 AWG
57-704	8 AWG
50-513	6 AWG Connector Holster
50-514	6 AWG Connector Pin



Stud Feed-Thru 57-700

Designed for use where a 12-volt power source must pass through a panel (i.e. firewall).



57-711



57-723

Remote Outlet Kits

57-711	Remote Outlet For Oil Heater Or Battery Charger
57-723	Remote Battery Charger Outlet With Cover



Male Recessed Outlet 57-710

Often used for remote access to battery or oil heater.

Firewall Grommets

Mounts securely to the firewall and locks onto the wire that passes through the bushing. Provides a waterproof seal and a vibration proof feed-through.

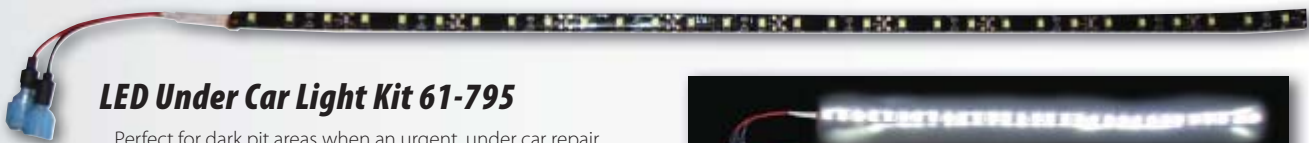


57-810

57-820

57-830

57-810	8-12 AWG
57-820	2-4 AWG
57-830	1/0 AWG



LED Under Car Light Kit 61-795

Perfect for dark pit areas when an urgent, under car repair is required. Bright white, 18" long LED light strip. Installs easily under car or in any dark area.

61-9795	Replacement LED Strip With Connectors
---------	---------------------------------------





55-009



55-010



55-021



55-120

Master Disconnects

Most sanctioning bodies require these for an emergency cut-off switch. Our Master Disconnect Switches come complete with a red epoxy-coated handle and mounting plate. Mounting plate is 2-1/2" x 2-1/2".

55-009	Switch With Flag Mounting Plate
55-010	Switch With Black Mounting Plate
55-021	Switch With Silver Mounting Plate
55-011	Switch With Black Mounting Plate, Cars w/Alternator
55-012	Switch With Flag Mounting Plate, Cars w/Alternator
55-022	Switch With Silver Mounting Plate, Cars w/Alternator
55-001	Switch Only
55-002	Switch Only, Cars w/Alternator
55-55	Replacement Red Switch Handle With Screw
55-120	Jumper Wire, 3" Long Wire For Use With 55-011 Or 55-012 To Simplify Wiring

Battery Disconnect Boots

Protects battery disconnect terminals from being accidentally shorted.

57-601	Red, Pair
57-602	Black, Pair



Master Disconnect Switch W/Removable Key 55-003

Removable key adds a measure of safety and security, while limiting switch access.

55-004	Replacement Key
--------	-----------------

Heavy Duty Starter Solenoid 50-430

Durable solenoid is impervious to dirt, heat and vibration. Will still function while others fail.



50-2002



50-2001

Starter Jumper Wires

Starter jumper wire is used when a remote solenoid is also being used. Wire jumps power from the solenoid to the starter when starter is engaged. Choose from wires with spade or ring style terminal ends.

50-2001	Spade Type Jumper Wire, Allstar Performance Or Tilton Starters
50-2002	Ring Terminal Jumper Wire, Bert Or Brinn Starters

Ignition Systems

QuickCar ignition wiring systems are used by many chassis builders and comply with specifications set by most sanctioning bodies.

QuickFire Ignition System 50-212

The QuickFire all-in-one ignition system is simple, affordable and eases the car building process. Fully assembled unit features an MSD Digital 6AL ignition with built-in rev control and Blaster coil for reliable, trouble-free operation. Ignition control panel uses double pole, high current switches for ignition and accessory with pilot lights, and is wired using high temperature cross link polyethylene wire that includes heavy duty crimped and soldered connections. Terminal strip connections are provided for tachometer and accessory hook-up. Incorporated heavy duty solenoid and 24k gold plated connectors help ensure reliable starting, while the master disconnect switch provides complete system shut down.



Dual Module Plate 50-440

Aluminum mounting plate, which is pre-drilled to accept two 6000 series MSD ignition units, includes a raised platform design and may be mounted to any flat surface using provided 1/4" holes. Plate also has provisions for solenoid, noise capacitor and two circuit breakers.



MSD Box Quick Release 50-442

Raised platform mounting plate accepts popular MSD 6000 series ignition and may be mounted to any flat surface. Sold complete with quick fasteners to allow ignition unit changes in the event of a failure.



Deutsch Weather Pack Adapter 50-2007

Eases the installation of MSD HVC ignitions, adapting the Deutsch square 6-pin connector to a 6-pin flat male Weather Pack connector.



Digital MSD Adapter 50-2006

Pigtail harness adapts an MSD Digital 6 ignition connector to a standard 6-pin flat male Weather Pack connector.



Crane Ignition Distributor Adapter 50-2008

Special wiring harness adapts Crane Ignition distributors that use a 3-pin Deutsch connector to a 2-pin Weather Pack connector.





50-200

Basic Ignition Wiring Harnesses

Ready-to-install, basic wiring harnesses ease the car building process. Each harness is 5' long and includes four individually labeled wires complete with plug-in connector.

50-200	Basic Wiring Harness
50-201	Basic Wiring Harness, HEI

Mod Ignition Wiring Harness Kit 50-2030

Universal harness for UMP/IMCA modified will connect all ignition components. Includes 50-020 switch panel with weatherproof switches.



Single Ignition Wiring Harness 50-2031

A universal Weather Pack harness for race cars utilizing a single box ignition system.



Dual Ignition Wiring Harness 50-2021

A universal Weather Pack harness for race cars using a dual box ignition system.



HEI Ignition Wiring Harness 50-2032

Universal wiring harness is designed for applications using an HEI ignition system. Designed for use with 50-031, 50-033, 50-731 or 50-7731 ignition panels, harness is constructed using Weather Pack connectors, heat shrink tubing and includes terminals for HEI distributor.



Dual Pickup Distributor Ignition Wiring Harness 50-2034

Universal Weather Pack wiring harness is designed for cars using a single ignition box and dual magnetic pickup distributor, or crank trigger/distributor combination. Must be used with 50-1714 ignition panel.



Crane Ignition/Asphalt Late Model Wiring Harness 50-2051

Specialized wiring harness is designed for asphalt late models using a Crane 6700-6701 Ignition system. Sold complete with wiring and connectors.

IGNITION SYSTEM ACCESSORIES

Ignition Control Panels

QuickCar has become the industry leader in ignition control panels. Panels include bridged double-pole switches, large gauge wiring with heavy duty connectors for improved conductivity and reliability. Panels are pre-wired to connect directly to our wiring harnesses.

Ignition Control Panel 50-020

Compact ignition panel includes push-to-start button, weatherproof ignition and an accessory switch. Panel is 4-5/8" wide x 2-1/2" high. Direct, plug-installation using the 50-200 or 50-201 wiring harness.



50-102



50-103

Ignition Control Panels

Ignition control panels are 3-3/8" wide x 3-5/8" high size. Panels have push-to-start button and ignition switch. Available with or without flip switch ignition cover. A direct, plug-in installation using 50-200 or 50-201 wiring harness.

50-102	Ignition Control Panel
50-103	Ignition Control Panel w/Flip Switch Ignition Cover

Ignition Control Panels

Panels, which are 3-3/8" wide x 4-1/4" high, include ignition switch, push-to-start button and pilot light. Choice of panels with or without flip switch cover. A direct, plug-in installation using 50-200 or 50-201 wiring harness

50-052	Ignition Control Panel
50-053	Ignition Control Panel w/Flip Switch Ignition Cover



50-052



50-053



50-022



50-023

Ignition Control Panels With Single Accessory Switch

Panels include ignition switch, push-to-start button, accessory switch and two pilot lights. Panels are 4-5/8" wide x 4-3/8" high. Choice of panels with or without flip switch cover. A direct, plug-in installation using 50-200 or 50-201 wiring harness.

50-022	Ignition Control Panel
50-023	Ignition Control Panel w/Flip Switch Ignition Cover

Ignition Control Panel With Two Accessory Switches 50-025

Panel includes ignition switch, push-to-start button, two accessory switches and three pilot lights. Panel is 4-5/8" wide x 4-3/8" high. A direct, plug-in installation using 50-200 or 50-201 wiring harness.



IGNITION CONTROL PANELS



Basic Ignition Wiring Harnesses

Ready-to-install, basic wiring harnesses ease the car building process. Each harness is 5' long and includes four individually labeled wires complete with direct, plug-in connector.

50-200	Basic Wiring Harness
50-201	Basic Wiring Harness, HEI

Single Ignition Control Panels

Pre-wired switch panels include ignition switch, push-to-start button and choice of single accessory or 3-wheel brake switch. Panels are 4-5/8" wide x 2-1/2" high. A direct, plug-in installation using the 50-2031 wiring harness.

50-031	Single Ignition Control w/Accessory Switch
50-033	Single Ignition Control w/3-Wheel Brake Switch



50-031

Single Ignition Wiring Harness 50-2031

A universal Weather Pack harness for race cars utilizing a single box ignition system.

Dual Ignition Control Panels

Dual ignition control panels, which are 4-1/8" wide x 3" high, includes start, ignition, cross-over and choice of accessory or 3-wheel brake switch. A direct, plug-in installation using 50-2021 wiring harness.

50-1711	Dual Ignition Control w/Accessory Switch
50-1713	Dual Ignition Control w/3-Wheel Brake Switch



50-1711

Dual Ignition Wiring Harness 50-2021

A universal Weather Pack harness for race cars using a dual box ignition system.

Dual Pickup Distributor Ignition Panel 50-1714

Engineered for cars using a single ignition box and a dual magnetic pickup distributor, or crank trigger/distributor combination. Panel, which is 4-1/8" wide x 3" high, features start, ignition, cross-over and two accessory switches. Pre-wired with a Weather Pack connector for a direct, plug-in installation using 50-2034 wiring harness.

NEW



Dual Pickup Distributor Ignition Wiring Harness 50-2034

Universal Weather Pack wiring harness is designed for cars using a single ignition box and dual magnetic pickup distributor, or crank trigger/distributor combination. Must be used with 50-1714 ignition panel.

IGNITION CONTROL PANELS



Basic wiring harness 50-200 with ignition control panel 50-020



Switch Panel To Wiring Harness Chart

The ignition switch panels listed below are designed as a direct, plug-in installation to a specific wiring harness, significantly easing and speeding-up the car building process. The chart identifies the proper wiring harness for each ignition switch panel.

Ignition Switch Panel	Wiring Harness
50-020	50-200 (Basic) or 50-201 (HEI)
50-022	50-200 (Basic) or 50-201 (HEI)
50-023	50-200 (Basic) or 50-201 (HEI)
50-025	50-200 (Basic) or 50-201 (HEI)
50-031	50-2031 (Single Ignition) or 50-2032 (HEI)
50-033	50-2031 (Single Ignition) or 50-2032 (HEI)
50-052	50-200 (Basic) or 50-201 (HEI)
50-053	50-200 (Basic) or 50-201 (HEI)
50-102	50-200 (Basic) or 50-201 (HEI)
50-103	50-200 (Basic) or 50-201 (HEI)

Ignition Switch Panel	Wiring Harness
50-1711	50-2021 (Dual Ignition)
50-1713	50-2021 (Dual Ignition)
50-1714	50-2034 (Dual Pickup)
50-711	50-2021 (Dual Ignition)
50-720	50-200 (Basic) or 50-201 (HEI)
50-731	50-2031 (Single Ignition) or 50-2032 (HEI)
50-7711	50-2021 (Dual Ignition)
50-7713	50-2021 (Dual Ignition)
50-7731	50-2031 (Single Ignition) or 50-2032 (HEI)

Ignition Control Panel 50-165

Compact ignition panel includes ignition switch, momentary start button and five accessory switches. Panel is 6-7/8" wide x 2" high.



Ignition Control Panel 50-166

Similar to the 50-165 ignition panel, but with the addition of six pilot lights. Panel, which is 6-7/8" wide x 3-1/4" high, includes ignition switch, momentary starter button, five accessory switches and six pilot lights.

Fused Ignition Control Panel 50-163

Panel features fused ignition switch, momentary start button and five fused accessory switches. Panel is 6-7/8" wide x 3-1/4" high.



Fused Ignition Control Panel 50-164

Similar and a bit larger than the 50-163 ignition panel, but with the addition of six pilot lights. Includes fused ignition switch, momentary starter button, five fused accessory switches and six pilot lights. Panel is 6-7/8" wide x 4-1/8" high.

Ignition Control Panel 50-172

Featuring weatherproof, aircraft grade micro switches with 20 amp breakers, panel includes ignition switch, momentary starter toggle and four accessory switches. The last switch is often used as a cross-over for ignition units. Panel is 6-1/2" wide x 4-5/8" high.





Extreme Ignition Control Panels

Weatherproof panels include ignition, momentary starter and single accessory switches. Panels are 4-5/8" wide x 2-1/2" high and are a direct, plug-in to the 50-200, 50-201, 50-2021 (dual ignition) or 50-2031 (single ignition) wiring harnesses.

50-720	Ignition Control Panel, Use 50-200 Or 50-201 Harness
50-711	Dual Ignition Control Panel, Use 50-2021 Harness
50-731	Single Ignition Control Panel, Use 50-2031 Harness

Extreme Dual Ignition Control Panels

Weatherproof switch panels, which are 4-1/8" wide x 3" high, are a direct, plug-in to the 50-2021 (dual ignition) harness. Includes ignition, momentary starter, cross-over and accessory switches. Ignition panel 50-7713 includes 3-wheel brake switch.

50-7711	Dual Ignition Control Panel, Use 50-2021 Harness
50-7713	Dual Ignition Control Panel w/3-Wheel Braking, Use 50-2021 Harness



Extreme Ignition Panel With Three Accessory Switches 50-7731

Extreme panel includes ignition, momentary starter and three accessory switches. Weatherproof panel is 4-1/8" wide x 3" high and is a direct, plug-in to the 50-2031 wiring harness.

Extreme Fused Ignition Control Panel 50-7164

Ignition panel combines the benefits of weatherproof, precision micro switches with built-in fuse access and a compact, 6-7/8" wide x 4-1/8" high size. Includes momentary start, ignition and five accessory switches.

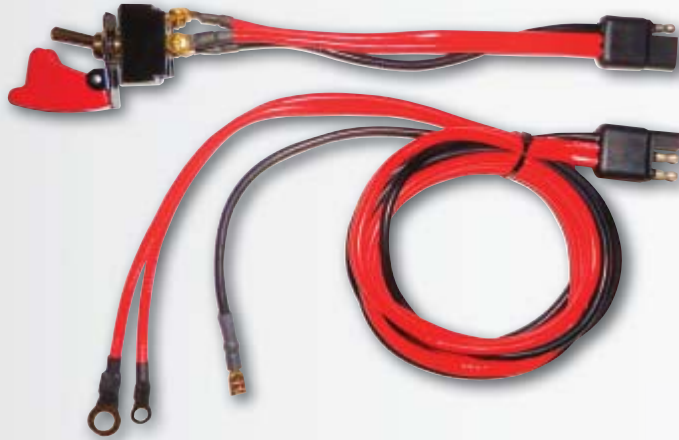


IGNITION CONTROL PANELS

Roll Bar To Switch/Gauge Panel Mounting Brackets

Specialized brackets allow quickly mounting gauge or switch panels to roll bar. Mounts virtually any height panel. Simply snip off any extra bracket length, if desired. Available to mount to 1-1/2", 1-5/8" or 1-3/4" dia. roll bar. Sold in pairs.

66-939	Switch Panel Mounting Bracket, 1-1/2" Roll Bar
66-940	Switch Panel Mounting Bracket, 1-3/4" Roll Bar
66-945	Switch Panel Mounting Bracket, 1-5/8" Roll Bar NEW



Ignition/Start Switch With Harness 50-507

Includes a 50-506 ignition switch, along with 50-200 basic wiring harness and 50-501 flip switch cover. Kit is pre-wired, and includes the starter switch and ignition switch, all in one.

Remote Start Button 50-434

Handy when performing valve lash adjustments. Includes heavy duty leads with gator clamps that connect to the starter solenoid, allowing the engine to be easily turned over.



Gator Clamps 50-435

Heavy duty gator clamps are ideal for repairing or customizing battery charger connectors, remote starters, etc. Sold in pairs, (1) red and (1) black rubber coated.

Toggle Switch Extensions

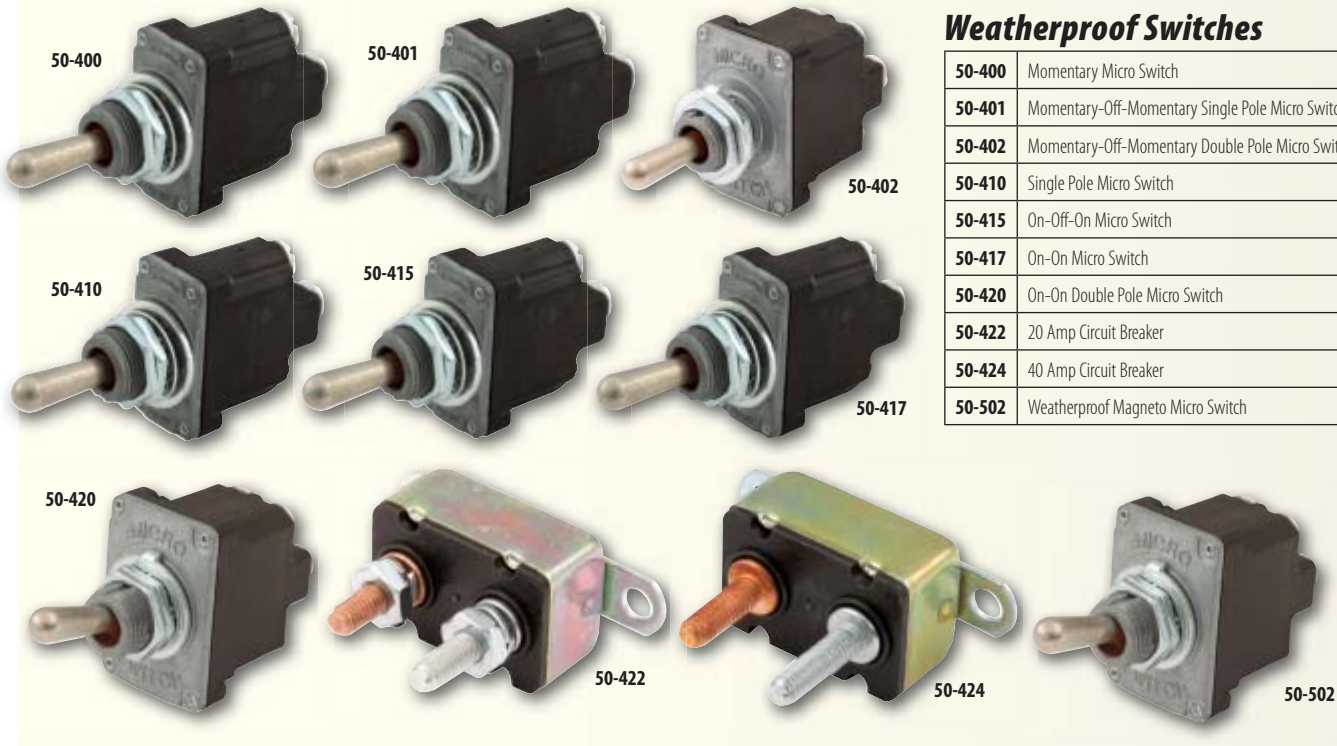
Push on switch extensions ease toggle switch activation, particularly when wearing driving gloves. Sold in pairs in choice of red or black.

50-524	Red, Two Pack
50-526	Black, Two Pack



Weatherproof Switches

50-400	Momentary Micro Switch
50-401	Momentary-Off-Momentary Single Pole Micro Switch
50-402	Momentary-Off-Momentary Double Pole Micro Switch
50-410	Single Pole Micro Switch
50-415	On-Off-On Micro Switch
50-417	On-On Micro Switch
50-420	On-On Double Pole Micro Switch
50-422	20 Amp Circuit Breaker
50-424	40 Amp Circuit Breaker
50-502	Weatherproof Magneto Micro Switch



HD Switch With Flip-Up Switch Cover 50-520

Heavy duty switch features an aircraft-type, flip-up switch cover.



HD Switch With Black Switch Cover 50-522

Heavy duty switch includes a weatherproof black switch cover.

Replacement Components

Designed specifically for QuickCar ignition control panels.

50-034	3-Wheel Brake Harness
50-500	Standard Single Pole Switch
50-501	Aircraft Flip Switch Cover
50-503	Magneto Switch, 6-Post, Carded
50-504	3-Wheel Brake Switch W/Rubber Cover
50-505	Bridged Double Pole Switch
50-506	Ignition W/Start Switch
50-510	Push-To-Start Momentary Switch
50-512	Momentary Toggle Switch
50-601	Red Pilot Light
50-609	Green Pilot Light
50-610	Replacement Rubber Boot For Switch



NEW

Deluxe Sprint Gauge Panels

Innovative, two-gauge panels feature a self-contained, low oil pressure warning system. Panels are fitted with QuickCar 2-5/8" diameter oil pressure and water temperature gauges, use a 9-volt battery for power, and install with quick fasteners. Choose from lightweight aluminum or ultra-light carbon fiber panels. Sold complete with required fasteners and battery.

61-6005	Aluminum Gauge Panel
61-6005-1	Aluminum Gauge Panel, Includes Magneto Switch
61-7005	Carbon Fiber Gauge Panel



61-6005



61-7005



61-6006



61-7004

Rear View



NEW

Pro Sprint Gauge Panels

Two-gauge panels weigh less than 1 lb., yet are very durable. Gauge panels are fitted with QuickCar 2-5/8" diameter oil pressure and water temperature gauges, and fasten to dash from engine bay using included quick fasteners. Choose from lightweight aluminum or ultra-light carbon fiber panels.

61-6004	Aluminum Gauge Panel
61-6006	Aluminum Gauge Panel, Vertical Mount
61-7004	Carbon Fiber Gauge Panel

Replacement Gauges

Gauges include mounting grommet.

611-6004	Oil Pressure, 0-100 PSI
611-6005	Water Temperature, 100°-280° F.



611-6004



611-6005





61-0604



Ultra-Nite Sprint Car Gauge Panels

Compact, lightweight gauge panels are fitted with Auto Meter 2-5/8" diameter Ultra-Nite glow-in-the-dark oil pressure and water temperature gauges. Gauges are mounted in aluminum or carbon fiber panels using shockproof rubber grommets. Available Deluxe gauge panels include 9-volt battery for self-sufficient power supply for low oil pressure warning light and toggle switch. All panels are sold complete with Quick fasteners.

Rear View



61-0605



61-0606



61-0704

Rear View



Rear View



61-0705

SPRINT CAR GAUGE PANELS

61-0604	Ultra-Nite Pro Sprint Panel, Aluminum Panel
61-0605	Ultra-Nite Deluxe Sprint Panel, Aluminum Panel, 9-Volt Powered
61-0606	Ultra-Nite Vertical Mount Panel, Aluminum Panel
61-0704	Ultra-Nite Pro Sprint Panel, Carbon Fiber Panel
61-0705	Ultra-Nite Deluxe Sprint Panel, Carbon Fiber Panel, 9-Volt Powered



611-4521



611-4531

Replacement Gauges

Gauges include mounting grommet.

611-4521	Oil Pressure, 0-100 PSI
611-4531	Water Temperature, 140°-280° F.

Offset Sprint Gauge Grommet 61-727

Special rubber grommet secures 2-5/8" diameter gauges into mounting panel, replacing traditional saddle brackets. Offsets gauges toward driver, while reducing gauge vibration for easier reading.



Aluminum Tee Fitting 61-722

Fitting includes a 1/8" NPT port to -4AN with 1/8" NPT side port for oil pressure sensor. Typically used with 61-6005 or 61-7005 gauge panels.



Oil Pressure Warning Kit 61-717

Self-contained kit, powered by a 9-volt battery, provides immediate warning of loss of oil pressure. Completely pre-wired and ready to install, kit is sold complete with warning light, switch, brass tee fitting, oil pressure sending unit and battery.



Deluxe Oil Pressure Warning Kit 61-718

Self-contained, battery-powered kit is identical to the 61-717, but with a lightweight aluminum tee fitting and weatherproof switch. Sold complete with warning light, switch, tee fitting, oil pressure sending unit and 9-volt battery.



Weatherproof Switch 50-401

Quality momentary-off-momentary toggle switch. Commonly used in conjunction with an electric motor to activate a wing adjuster.



Weatherproof Momentary-Off-Momentary Switch 50-402

Momentary-off-momentary switch may be wired to reverse polarity and used with an electric motor to adjust wing angle.



Weatherproof Switch 50-403

Pre-wired switch is typically used on mini sprints with an electric motor to adjust wing angle.

50-402	Replacement Switch
--------	--------------------



Weatherproof Magneto Switch 50-502

Common to sprint cars, weatherproof toggle switch is typically used to activate or shut-off the ignition on applications using a magneto.



Extended Aluminum Temperature Adapter 611-903

Extended, 3/8" NPT temperature adapter, manufactured from lightweight aluminum, is for use on applications where the temperature probe contacts the inside of the cylinder head before tightening. Typically required for most aluminum heads.



Tachometers

Made in the USA, QuickCar tachometers are used in the assembly of our quality built, ready to install panels, and are also offered separately.

Extreme LCD Digital Tachometer 611-7010

Digital tachometer's compact, 2-5/8" diameter allows it to be installed into any Extreme gauge panel. Tachometer may be used simply as an RPM indicator, or as a shift light. RPM settings are adjusted by simply touching the lens with a finger. Unit also includes a recall feature, which displays the highest RPM attained at the end of the race.



Shift Lights On



Tachometer With Memory 611-6001

A true American made, 5" diameter tachometer that is affordable, dependable and accurate. Tachometer, which has a silver dial face with bright red pointer, has a 0-10,000 RPM range and popular memory feature, which allows displaying the highest RPM attained from the last race. Unit features an analog design, thereby lacking a microprocessor and providing legality in all sanctioning bodies.



611-096

Tachometer With Remote Recall 611-6002

Made in the USA, 3-3/8" diameter aluminum-cased tachometer includes a 0-10,000 RPM range. Designed for in-dash mounting, tachometer includes a silver dial face with bright red pointer, and includes a remote recall, which displays the highest RPM attained during the last race. Analog rather than microprocessor design allows legality in all sanctioning bodies.



TACHOMETERS

611-096	Replacement Remote Recall Switch
---------	----------------------------------



611-099

611-100

QuickTach LCD Recall Tachometers

Compact, yet accurate QuickTach features a 1-3/4" wide x 3/4" high LCD digital display of engine RPM, while also including the ability to recall the highest RPM attained during the last race. RPM recall is automatically displayed for up to 15 minutes once the engine is shut down, and clears when the engine is re-started. A reset button allows for occasions when it is desired to reset the unit during racing. Lightweight, aluminum cased unit is waterproof and is self-powered by a 9-volt battery.

611-099	QuickTach, White/Red With Checkered Flag
611-100	QuickTach, Black

Extreme Gauge Panels

Extreme Gauge Panels feature lightweight, 2-5/8" diameter white face mechanical gauges with bright red pointers mounted in gloss black finished panels. USA-made panels are pre-wired, ready to install and include necessary senders. No external warning lights are needed; gauges use LED lights and switch automatically from white to designated color when a problem arises. Gauges are mounted using vibration absorbing grommets for added durability.

Extreme 2-Gauge Panel 61-7001

Basic, 7-1/4" wide x 4-1/2" high panel includes gauges for oil pressure and water temperature.



Warning Lights Activated



Extreme 3-Gauge Panel 61-7011

Panel is 10-1/2" wide x 4-1/2" high and features oil pressure, water temperature and oil temperature gauges.



Warning Lights Activated

Extreme 3-Gauge Panel 61-7012

Panel is complete with oil pressure, water temperature and fuel pressure gauges, and is 10-1/2" wide x 4-1/2" high.



Warning Lights Activated



Extreme 4-Gauge Panel 61-7021

Panel, which is 13-5/8" wide x 4-1/2" high, includes oil pressure, water temperature, oil temperature and fuel pressure gauges.



Warning Lights Activated



Extreme Gauge Panels With LCD Digital Tachometer

Extreme gauge panels feature the addition of the Extreme LCD Digital Tachometer, which may be used as an RPM indicator or shift light that also includes a recall feature. RPM settings are adjusted by simply touching the lens with a finger. Fully assembled and pre-wired, gauge panels are complete with necessary senders. May be assembled with any combination of gauges; please call with specific requirements.



Extreme 2-1 Gauge Panel 61-7031

2-1 gauge panel is complete with gauges for oil pressure and water temperature, and the Extreme LCD Digital Tachometer. Panel is 10-1/2" wide x 4-1/2" high.



Warning
Lights
Activated

Extreme 3-1 Gauge Panel 61-7041

3-1 gauge panel includes oil pressure, water temperature and oil temperature gauges, and the Extreme LCD Digital Tachometer. Panel is 13-5/8" wide x 4-1/2" high.



Extreme 3-1 Gauge Panel 61-7042

3-1 gauge panel includes oil pressure, water temperature and fuel pressure gauges, and the Extreme LCD Digital Tachometer. Panel is 13-5/8" wide x 4-1/2" high.



Warning
Lights
Activated

Extreme 4-1 Gauge Panel 61-7051

4-1 gauge panel includes oil pressure, water temperature, oil temperature and fuel pressure gauges, and the Extreme LCD Digital Tachometer. Panel is 17" wide x 4-1/2" high.



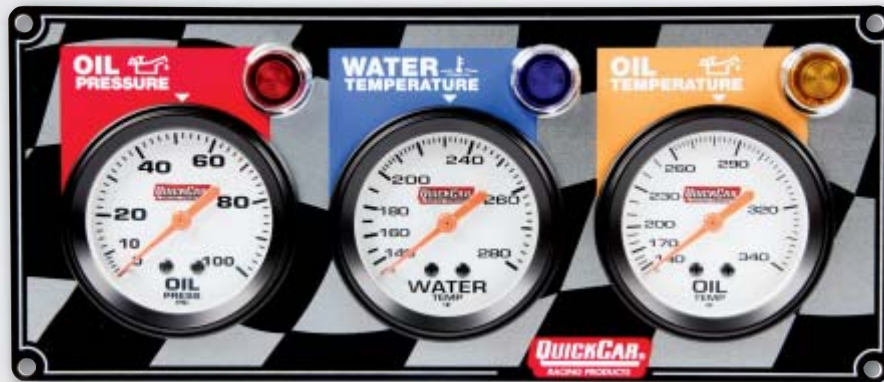
GAUGE PANELS

Standard Gauge Panels

Standard gauge panels feature quality QuickCar 2-5/8" diameter mechanical gauges. Panels are sold completely pre-wired for easy installation and include all necessary senders.

2-Gauge Panel 61-6001

Basic panel includes gauges for oil pressure and water temperature. Panel is 7-1/4" wide x 4-1/2" high.



3-Gauge Panel 61-6011

Panel includes gauges for oil pressure, water temperature and oil temperature. Panel is 10-1/2" wide x 4-1/2" high.

3-Gauge Panel 61-6012

Panel includes gauges for oil pressure, water temperature and fuel pressure. Panel is 10-1/2" wide x 4-1/2" high.



4-Gauge Panel 61-6021

Panel features gauges for oil pressure, water temperature, oil temperature and fuel pressure. Panel is 13-5/8" wide x 4-1/2" high.

Standard Gauge Panels With 5" Tachometer



2-1 Gauge Panel 61-6031

Basic 2-1 panel includes a 5" diameter QuickCar 10,000 RPM recall tachometer, 2-5/8" diameter mechanical gauges for oil pressure and water temperature, and accompanying warning lights. Panel is 11-7/8" wide x 4-1/2" high.

3-1 Gauge Panel 61-6041

Panel incorporates a 5" diameter QuickCar 10,000 RPM recall tachometer, 2-5/8" diameter mechanical gauges for oil pressure, water temperature and oil temperature, and accompanying warning lights. Panel is 15-1/8" wide x 4-1/2" high.



3-1 Gauge Panel 61-6042

Popular panel uses a 5" diameter QuickCar 10,000 RPM recall tachometer, 2-5/8" diameter mechanical gauges for oil pressure, water temperature and fuel pressure, and accompanying warning lights. Panel is 15-1/8" wide x 4-1/2" high.



4-1 Gauge Panel 61-6051

Panel features QuickCar 5" diameter, 10,000 RPM recall tachometer, 2-5/8" diameter mechanical gauges for oil pressure, water temperature, oil temperature and fuel pressure, and accompanying warning lights. Panel is 18-3/8" wide x 4-1/2" high.

GAUGE PANELS

Standard Gauge Panels With 3-3/8" Tachometers

2-1 Gauge Panel 61-60313

Basic panel includes a QuickCar 3-3/8" diameter 10,000 RPM remote recall tachometer, 2-5/8" diameter mechanical gauges for oil pressure and water temperature, and accompanying warning lights. Panel is 11-7/8" wide x 4-1/2" high.



3-1 Gauge Panel 61-60413

Panel incorporates a QuickCar 3-3/8" diameter 10,000 RPM remote recall tachometer, 2-5/8" diameter mechanical gauges for oil pressure, water temperature and oil temperature, and accompanying warning lights. Panel is 15-1/8" wide x 4-1/2" high.



3-1 Gauge Panel 61-60423

Panel features a QuickCar 3-3/8" diameter 10,000 RPM remote recall tachometer, 2-5/8" diameter mechanical gauges for oil pressure, water temperature and fuel pressure, and accompanying warning lights. Panel is 15-1/8" wide x 4-1/2" high.



4-1 Gauge Panel 61-60513

Panel combines a QuickCar 3-3/8" diameter 10,000 RPM remote recall tachometer, 2-5/8" diameter mechanical gauges for oil pressure, water temperature, oil temperature and fuel pressure, and accompanying warning lights. Panel is 18-3/8" wide x 4-1/2" high.



Standard 2-5/8" Gauges

May also be purchased separately. Sold complete with 12-volt lighting. Senders and pressure line not included.

Fuel Pressure 611-6000

0-15 PSI.



Water Temperature 611-6006

100°-280° F.



Oil Pressure 611-6003

0-100 PSI.



Oil Temperature 611-6009

100°-340° F.



Extreme 2-5/8" Gauges

May also be purchased separately. Sold complete with 12-volt lighting. Senders and pressure lines not included.

Fuel Pressure 611-7000

0-15 PSI.



Warning
Light
Activated

Volt Meter 611-7007

8-18 Volts.



Warning
Light
Activated

Oil Pressure 611-7003

0-100 PSI.



Warning
Light
Activated

Oil Temperature 611-7009

100°-320° F.



Warning
Light
Activated

Water Temperature 611-7006

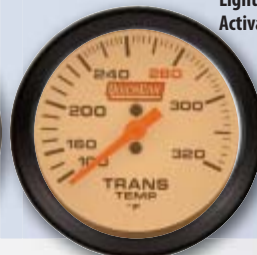
100°-280° F.



Warning
Light
Activated

Transmission Temperature 611-7012

100°-320° F.



Warning
Light
Activated

Fuel Pressure Isolator 61-300

Specialized isolator eliminates the hazards associated with driver's compartment mounted fuel pressure gauges. Typically mounted to the engine side firewall, isolator is plumbed with the pressure source on the inlet side and an anti-freeze/water mix on the outlet, which connects to the gauge. Compatible with gasoline, alcohol or methanol fuels, isolator is manufactured from black anodized, 6061-T6 billet aluminum for durability. Capable of monitoring pressures up to 80 PSI, unit is sold complete with -4AN adapter fittings, mounting bracket and necessary hardware.



NEW

Oil Temperature Manifold 61-755

Installed in-line to allow monitoring engine oil temperature, manifold is constructed from rigid billet aluminum and black anodized for corrosion resistance. Manifold includes -10AN O-ring boss inlet and outlet ports, and a 3/8" female NPT port for an oil temperature probe.



NEW

Pressure Gauge Line Kits

Each kit includes two 1/8" NPT to -4AN adapter fittings and -4AN stainless steel braided line to hook-up pressure gauges.



61-71012	12"
61-71024	24"
61-71036	36"
61-71048	48"
61-71060	60"

1/8" NPT Pressure Gauge Line Kits

Designed to connect mechanical pressure gauges, kits are offered with copper or nylon tubing. Each kit is complete with required fittings.



61-710	Nylon Gauge Line Kit
61-7101	Copper Gauge Line Kit
61-724	1/8" NPT Female To -4AN Male Gauge Adapter (Each)
61-725	1/8" NPT Male To -4AN Male Gauge Adapter (Each)

Brass 1/8" NPT Tee Fittings

Required when wiring in warning lights.

61-720	1/8" NPT "T"-Fitting, (2) Female Ports, (1) Male Port
61-721	1/8" NPT "T"-Fitting, (3) Female Ports



Aluminum Tee Fitting 61-722

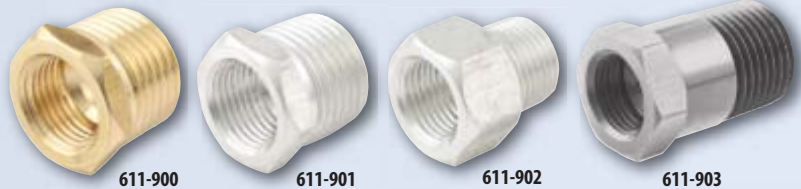
Fitting includes a 1/8" NPT port to -4AN with 1/8" NPT side port for oil pressure sensor.



Temperature Adapters

Used to connect mechanical water or oil temperature gauges to engine.

611-900	1/2" NPT Brass Adapter
611-901	1/2" NPT Aluminum Adapter
611-902	3/8" NPT Aluminum Adapter
611-903*	3/8" NPT Extended Aluminum Adapter



* Note: For use on applications where the temperature probe contacts the inside of the cylinder head before tightening. Typically required for most aluminum heads.

Pressure and Temperature Gauge Panel Switches

Fuel Pressure Switch 61-730

Activates warning light when fuel pressure drops below 4 PSI. Switch has 1/8" NPT.



Oil Pressure Switches

Switches are offered to activate oil pressure warning light at 20 or 30 PSI. Switches have 1/8" NPT.



61-733	Oil Pressure Switch, Activates At 30 PSI
61-735	Oil Pressure Switch, Activates At 20 PSI

Water Temperature Switches

Activates warning light when water temperature rises to 235° F. Offered with 3/8" or 1/2" NPT.

61-740	Water Temperature Switch, 1/2" NPT
61-748	Water Temperature Switch, 3/8" NPT



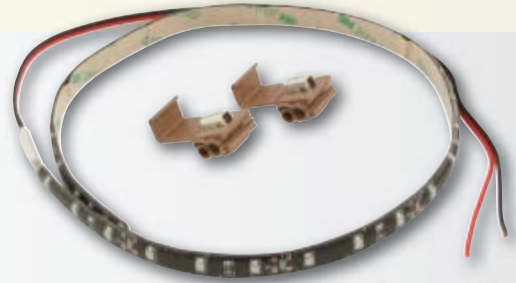
Oil Temperature Switch 61-750

Activates warning light when oil temperature rises above 280° F. Has a 1/2" NPT.



LED Red Light Strip 61-790

Red, 18" long LED strip, which may be trimmed to length, is typically mounted to the dashboard and wired to a warning light, quickly alerting the driver in the event of a problem. Sold complete with necessary wiring.



Example of LED Red Light Strip, Gauge Panel Not Included

Replacement Warning Lights

Replacement lights are designed for QuickCar panels and include snap-in design. Lights feature a more durable, non-brittle one-piece body.

61-701	Red
61-702	Blue
61-704	Amber
61-709	Green
61-706	4-Pc. Warning Light Kit Includes (1) red, (1) blue, (1) amber and (1) green warning light.



LED Bulbs

Bulb fits into the back lighting of standard QuickCar gauges, offering bright illumination and easier gauge reading, while using less power and adding reliability. Perfect for 16V applications.

61-698	White LED Bulbs, 4-Pack
61-699	White LED Bulb, Each
61-691	Red LED Bulbs, Pair
61-692	Blue LED Bulbs, Pair
61-693	Amber LED Bulbs, Pair
61-694	Green LED Bulbs, Pair



Replacement Bulbs 61-700

Standard replacement bulbs for QuickCar gauges. Sold per pair.



GAUGE PANEL ACCESSORIES

Gauge Panels With Auto Meter Sport-Comp Gauges

Auto Meter's Sport-Comp gauge line is the most popular due to the fact that it combines the benefits of affordability, durability and performance. Gauges feature advanced, air-core meter movement for quicker response, while bold dials with fluorescent red pointers offer exceptional readability, even at the high speeds common to racing.

Auto Meter Sport-Comp 2-Gauge Panel 61-0101

Compact panel includes 2-5/8" diameter mechanical gauges for oil pressure and water temperature, and accompanying warning lights. Panel is 7-1/4" wide x 4-1/2" high.



Auto Meter Sport-Comp 3-Gauge Panel 61-0201

Panel includes 2-5/8" diameter mechanical gauges for oil pressure, water temperature and oil temperature, and accompanying warning lights. Panel is 10-1/2" wide x 4-1/2" high.

Auto Meter Sport-Comp 3-Gauge Panel 61-0211

Panel features 2-5/8" diameter mechanical gauges for oil pressure, water temperature and fuel pressure, and accompanying warning lights. Panel is 10-1/2" wide x 4-1/2" high.



Auto Meter Sport-Comp 4-Gauge Panel 61-0301

Panel includes 2-5/8" diameter mechanical gauges for oil pressure, water temperature, oil temperature and fuel pressure, and accompanying warning lights. Panel is 13-5/8" wide x 4-1/2" high.



Gauge Panels With Auto Meter Sport-Comp Gauges (Cont.)



Auto Meter Sport-Comp 2-1 Gauge Panel 61-0371

Panel features a 5" diameter 10,000 RPM memory tachometer with recall, 2-5/8" diameter mechanical oil pressure and water temperature gauges, and accompanying warning lights. Panel is 11-7/8" wide x 4-1/2" high.

Auto Meter Sport-Comp 3-1 Gauge Panel 61-0401

Popular panel incorporates a 5" diameter 10,000 RPM memory tachometer with recall, 2-5/8" diameter mechanical gauges for oil pressure, water temperature and oil temperature, and accompanying warning lights. Panel is 15-1/8" wide x 4-1/2" high.



Auto Meter Sport-Comp 3-1 Gauge Panel 61-0411

Panel has a 5" diameter 10,000 RPM memory tachometer with recall, 2-5/8" diameter mechanical gauges for oil pressure, water temperature and fuel pressure, and accompanying warning lights. Panel is 15-1/8" wide x 4-1/2" high.



Auto Meter Sport-Comp Grand National Gauge Panel 61-0501

Grand National panel features a 5" diameter 10,000 RPM memory tachometer with recall, 2-5/8" diameter mechanical gauges for oil pressure, water temperature, oil temperature and fuel pressure, and accompanying warning lights. Panel is 18-3/8" wide x 4-1/2" high.



Auto Meter Sport-Comp Replacement Gauges

611-3411	Fuel Pressure, 0-15 PSI
611-3421	Oil Pressure, 0-100 PSI
611-3431	Water Temperature, 140°-280° F.
611-3441	Oil Temperature, 140°-280° F.



611-3411

611-3421

611-3431

611-3441

Gauge Panels With Auto Meter Ultra-Lite Gauges

The Ultra-Lite line of gauges weighs less than half the weight of equivalent Sport-Comp gauges, while maintaining the performance and reliability you expect from Auto Meter. Gauges have a clear anodized aluminum bezel, bold numbers and fluorescent red pointers for quick, easy reading.



**Auto Meter Ultra-Lite
2-Gauge Panel
61-0171**

Basic panel includes 2-5/8" diameter mechanical gauges for oil pressure and water temperature, and accompanying warning lights. Panel is 7-1/4" wide x 4-1/2" high.

**Auto Meter Ultra-Lite
3-Gauge Panel
61-0271**

Ultra-Lite panel includes 2-5/8" diameter mechanical gauges for oil pressure, water temperature and oil temperature, and accompanying warning lights. Panel is 10-1/2" wide x 4-1/2" high.



**Auto Meter Ultra-Lite
3-Gauge Panel
61-0281**

Ultra-Lite panel includes 2-5/8" diameter mechanical gauges for oil pressure, water temperature and fuel pressure, and accompanying warning lights. Panel is 10-1/2" wide x 4-1/2" high.



**Auto Meter
Ultra-Lite
4-Gauge Panel
61-0321**

Panel includes 2-5/8" diameter mechanical gauges for oil pressure, water temperature, oil temperature and fuel pressure, and accompanying warning lights. Panel is 13-5/8" wide x 4-1/2" high.



Gauge Panels With Auto Meter Ultra-Lite Gauges (Cont.)

Auto Meter Ultra-Lite 2-1 Gauge Panel 61-0391

Panel features a 5" diameter 10,000 RPM memory tachometer with recall, 2-5/8" diameter mechanical gauges for oil pressure and water temperature, and accompanying warning lights. Panel is 11-7/8" wide x 4-1/2" high.



Auto Meter Ultra-Lite 3-1 Gauge Panel 61-0471

Panel includes a 5" diameter 10,000 RPM memory tachometer with recall, 2-5/8" diameter mechanical gauges for oil pressure, water temperature and oil temperature, and accompanying warning lights. Panel is 15-1/8" wide x 4-1/2" high.

Auto Meter Ultra-Lite 3-1 Gauge Panel 61-0481

Panel combines a 5" diameter 10,000 RPM memory tachometer with recall, 2-5/8" diameter mechanical gauges for oil pressure, water temperature and fuel pressure, and accompanying warning lights. Panel is 15-1/8" wide x 4-1/2" high.



GAUGE PANELS



Auto Meter Ultra-Lite Grand National Gauge Panel 61-0571

Panel features a 5" diameter 10,000 RPM memory tachometer with recall, 2-5/8" diameter mechanical gauges for oil pressure, water temperature, oil temperature and fuel pressure, and accompanying warning lights. Panel is 18-3/8" wide x 4-1/2" high.

Auto Meter Ultra-Lite Replacement Gauges

611-4411	Fuel Pressure, 0-15 PSI
611-4421	Oil Pressure, 0-100 PSI
611-4431	Water Temperature, 140°-280° F.
611-4441	Oil Temperature, 140°-280° F.



611-4411



611-4421



611-4431



611-4441

Gauge Panels With Auto Meter Pro-Comp Liquid-Filled Gauges

Auto Meter's Pro-Comp gauges are top-of-the-line, liquid-filled to dampen vibration and increase gauge accuracy. A black dial face with bright fluorescent red pointer allow quick, easy gauge reading.



**Auto Meter Pro-Comp
2-Gauge Panel
61-0151**

Compact, basic panel includes 2-5/8" diameter mechanical gauges for oil pressure and water temperature, and accompanying warning lights. Panel is 7-1/4" wide x 4-1/2" high.

**Auto Meter Pro-Comp
3-Gauge Panel
61-0261**

Pro-Comp panel includes 2-5/8" diameter mechanical gauges for oil pressure, water temperature and fuel pressure, and accompanying warning lights. Panel is 10-1/2" wide x 4-1/2" high.



**Auto Meter Pro-Comp
3-Gauge Panel
61-0251**

Panel features 2-5/8" diameter mechanical gauges for oil pressure, water temperature and oil temperature, and accompanying warning lights. Panel is 10-1/2" wide x 4-1/2" high.

**Auto Meter Pro-Comp
4-Gauge Panel
61-0311**

Panel incorporates 2-5/8" diameter mechanical gauges for oil pressure, water temperature, oil temperature and fuel pressure, and accompanying warning lights. Panel is 13-5/8" wide x 4-1/2" high.



Gauge Panels With Auto Meter Pro-Comp Liquid-Filled Gauges (Cont.)

Auto Meter Pro-Comp 2-1 Gauge Panel 61-0381

Panel combines a 5" diameter 10,000 RPM memory tachometer with recall, 2-5/8" diameter mechanical gauges for oil pressure and water temperature, and accompanying warning lights. Panel is 11-7/8" wide x 4-1/2" high.



Auto Meter Pro-Comp 3-1 Gauge Panel 61-0451

Pro-Comp panel includes a 5" diameter 10,000 RPM memory tachometer with recall, 2-5/8" diameter mechanical gauges for oil pressure, water temperature and oil temperature, and accompanying warning lights. Panel is 15-1/8" wide x 4-1/2" high.

Auto Meter Pro-Comp 3-1 Gauge Panel 61-0461

Panel is fitted with a 5" diameter 10,000 RPM memory tachometer with recall, 2-5/8" diameter mechanical gauges for oil pressure, water temperature and fuel pressure, and accompanying warning lights. Panel is 15-1/8" wide x 4-1/2" high.



Auto Meter Pro-Comp Grand National Gauge Panel 61-0551

Grand National panel includes a 5" diameter 10,000 RPM memory tachometer with recall, 2-5/8" diameter mechanical gauges for oil pressure, water temperature, oil temperature and fuel pressure, and accompanying warning lights. Panel is 18-3/8" wide x 4-1/2" high.

Auto Meter Pro-Comp Replacement Gauges

611-5411	Fuel Pressure, 0-15 PSI
611-5421	Oil Pressure, 0-100 PSI
611-5431	Water Temperature, 140°-280° F.
611-5441	Oil Temperature, 140°-280° F.



611-5411



611-5421



611-5431



611-5441

GAUGE PANELS

Gauge Panels With Auto Meter Ultra-Nite Gauges

Auto Meter Ultra-Nite gauges feature blue bezels, glow-in-the-dark white dial faces and bright fluorescent red pointers. Gauges require no electrical power.

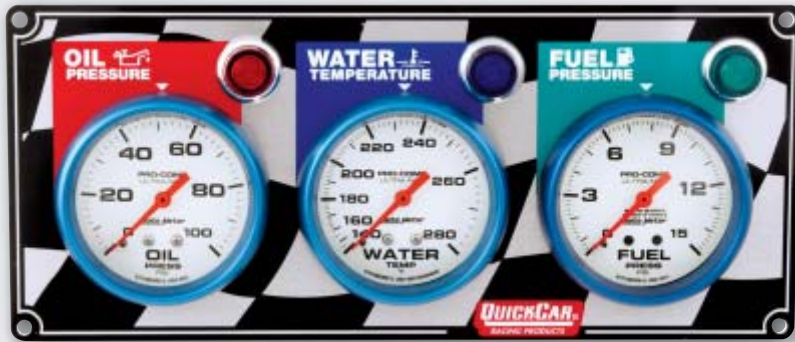


**Auto Meter Ultra-Nite
2-Gauge Panel
61-0601**

Basic panel includes 2-5/8" diameter mechanical oil pressure and water temperature gauges, and accompanying warning lights. Panel is 7-1/4" wide x 4-1/2" high.

**Auto Meter Ultra-Nite
3-Gauge Panel
61-0611**

Panel incorporates 2-5/8" diameter mechanical oil pressure, water temperature and oil temperature gauges, and accompanying warning lights. Panel is 10-1/2" wide x 4-1/2" high.



**Auto Meter Ultra-Nite
3-Gauge Panel
61-0621**

Panel includes 2-5/8" diameter mechanical oil pressure, water temperature and fuel pressure gauges, and accompanying warning lights. Panel is 10-1/2" wide x 4-1/2" high.

**Auto Meter Ultra-Nite
4-Gauge Panel
61-0631**

Ultra-Nite panel features 2-5/8" diameter mechanical oil pressure, water temperature, oil temperature and fuel pressure gauges, and accompanying warning lights. Panel is 13-5/8" wide x 4-1/2" high.



Gauge Panels With Auto Meter Ultra-Nite Gauges (Cont.)

Auto Meter Ultra-Nite 2-1 Gauge Panel 61-0661

Ultra-Nite panel features a 5" diameter 10,000 RPM memory tachometer, 2-5/8" diameter mechanical oil pressure and water temperature gauges, and accompanying warning lights. Panel is 11-7/8" wide x 4-1/2" high.



Auto Meter Ultra-Nite 3-1 Gauge Panel 61-0651

Panel includes a 5" diameter 10,000 RPM memory tachometer, 2-5/8" diameter mechanical oil pressure, water temperature and oil temperature gauges, and accompanying warning lights. Panel is 15-1/8" wide x 4-1/2" high.

Auto Meter Ultra-Nite 3-1 Gauge Panel 61-0652

Panel includes a 5" diameter 10,000 RPM memory tachometer, 2-5/8" diameter mechanical oil pressure, water temperature and fuel pressure gauges, and accompanying warning lights. Panel is 15-1/8" wide x 4-1/2" high.



GAUGE PANELS



Auto Meter Ultra-Nite Grand National Gauge Panel 61-0641

Panel uses 5" diameter 10,000 RPM memory tachometer, 2-5/8" diameter mechanical oil pressure, water temperature, oil temperature and fuel pressure gauges, and accompanying warning lights. Panel is 18-3/8" wide x 4-1/2" high.

Auto Meter Ultra-Nite Replacement Gauges

611-4511	Fuel Pressure, 0-15 PSI
611-4521	Oil Pressure, 0-100 PSI
611-4531	Water Temperature, 140°-280° F.
611-4541	Oil Temperature, 140°-280° F.



Gauge Panels With Stewart Warner Deluxe Gauges

Stewart Warner Deluxe 2-Gauge Panel 61-2061

Basic panel includes 2-5/8" diameter mechanical gauges for oil pressure and water temperature, and accompanying warning lights. Panel is 7-1/4" wide x 4-1/2" high.



Stewart Warner Deluxe 3-Gauge Panel 61-2081

Panel features 2-5/8" mechanical gauges for oil pressure, water temperature and oil temperature, and accompanying warning lights. Panel is 10-1/2" wide x 4-1/2" high.

Stewart Warner Deluxe 3-Gauge Panel 61-2101

Panel includes 2-5/8" mechanical gauges for oil pressure, water temperature and fuel pressure, and accompanying warning lights. Panel is 10-1/2" wide x 4-1/2" high.



Stewart Warner Deluxe 4-Gauge Panel 61-2121

Panel includes 2-5/8" mechanical gauges for oil pressure, water temperature, oil temperature and fuel pressure, and accompanying warning lights. Panel is 13-5/8" wide x 4-1/2" high.

Stewart Warner Replacement Gauges

Mechanical, 2-5/8" diameter gauges use black dial faces and white pointers. Includes 12-volt lighting.

611-30	Oil Pressure, 0-100 PSI
611-31	Water Temperature, 100°-265° F.
611-32	Oil Temperature, 140°-325° F.
611-325	Fuel Pressure, 0-15 PSI



Quick-Lite Warning Light Kits

Warning light kits are designed to immediately alert the driver of any engine problems. Each kit is sold complete with warning light, sending switch and wiring.



Oil Pressure Kit 61-711

Kit includes a red warning light, pressure sending unit that actuates the warning light if oil pressure drops below 20 PSI, brass in-line tee for oil pressure line, and necessary pre-terminated wiring.

Water Temperature Kit 61-712

Kit includes a blue warning light, temperature sending unit that actuates the warning light if water temperature exceeds 235° F, and necessary pre-terminated wiring.



Water Pressure Kit 61-713

Kit includes a blue warning light, pressure sending unit that actuates the warning light if water pressure drops below 4 PSI, and necessary pre-terminated wiring. Kit provides instant notice of coolant pressure loss such as a blown hose, radiator or head gasket leakage. Sending unit may be installed virtually anywhere in the cooling system.



Oil Temperature Kit 61-714

Kit includes an amber warning light, temperature sending unit that actuates the warning light if oil temperature exceeds 280° F, and necessary pre-terminated wiring.



Fuel Pressure Kit 61-719

Kit includes a green warning light, pressure sending unit that actuates the warning light if fuel pressure drops below 4 PSI, brass in-line tee and necessary pre-terminated wiring.



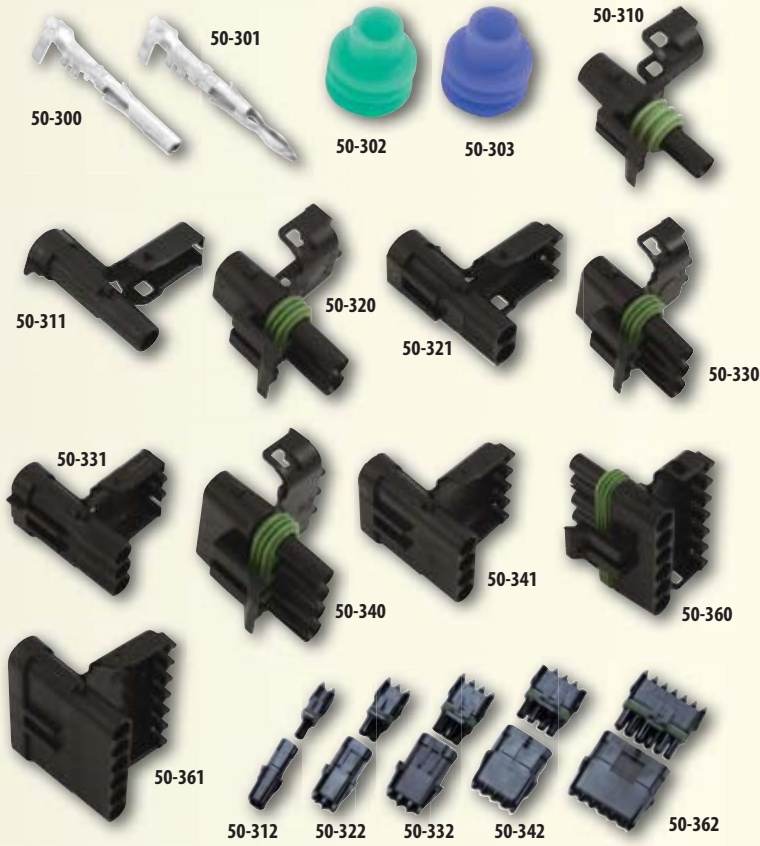
Water Pressure Kit With 2-1/16" Dia. Gauge 61-716

Keep track of spikes or loss of cooling system pressure, which if unnoticed, can cause catastrophic engine failure. Kit is similar to 61-713, but with the addition of a QuickCar 2-1/16" diameter mechanical 0-35 PSI water pressure gauge. Also includes blue warning light, pressure sending unit that actuates the warning light if water pressure drops below 4 PSI, brass in-line tee and necessary pre-terminated wiring.

61-697	Replacement LED Bulb
611-6008	Replacement Gauge, 0-35 PSI



GAUGE PANEL ACCESSORIES



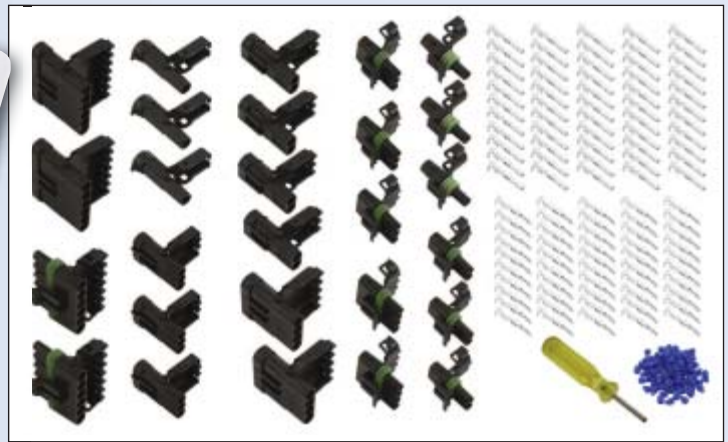
Weather Pack Terminals

A secure, virtually bulletproof wire termination with a waterproof cable seal for connecting ignition or accessories throughout the race car. One through six male and female connectors are available. Rated up to 20A at 12-volt DC. Sold individually.

50-300	Female Pin
50-301	Male Pin
50-302	Green Cable Seal, For 2.03-2.85mm Wire Dia.
50-303	Blue Cable Seal, For 3.45-4.30mm Wire Dia.
50-310	Female Connector, 1-Pin
50-311	Male Connector, 1-Pin
50-312	1-Pin Connector Kit, Male And Female
50-320	Female Connector, 2-Pin
50-321	Male Connector, 2-Pin
50-322	2-Pin Connector Kit, Male And Female
50-330	Female Connector, 3-Pin
50-331	Male Connector, 3-Pin
50-332	3-Pin Connector Kit, Male And Female
50-340	Female Connector, 4-Pin
50-341	Male Connector, 4-Pin
50-342	4-Pin Connector Kit, Male And Female
50-360	Female Connector, 6-Pin
50-361	Male Connector, 6-Pin
50-362	6-Pin Connector Kit, Male And Female

Weather Pack Kit 50-380

230-piece Weather Pack kit includes a wide variety of connectors, housing cable seals and contact pins. Sold in plastic carrying case.



Professional Crimping Tool 50-398

Required for terminating wire with Weather Pack terminals, providing a "positive lock" crimp on the wire.



Pin Tool Remover 50-399

Required to remove contact pins from Weather Pack housing.

**Digital MSD Adapter
50-2006**

Pigtail harness adapts the new MSD Digital 6 boxes to a standard 6-pin flat male Weather Pack connector.



**Deutsch To Weather Pack Adapter
50-2007**

Wiring adapter eases the installation of MSD HVC ignition boxes, adapting the Deutsch square 6-pin connector of the ignition box to Weather Pack flat 6-pin connector.



Crane Ignition Distributor Adapter 50-2008

Special wiring harness adapts Crane Ignition distributors that use a 3-pin Deutsch connector to a 2-pin Weather Pack connector.

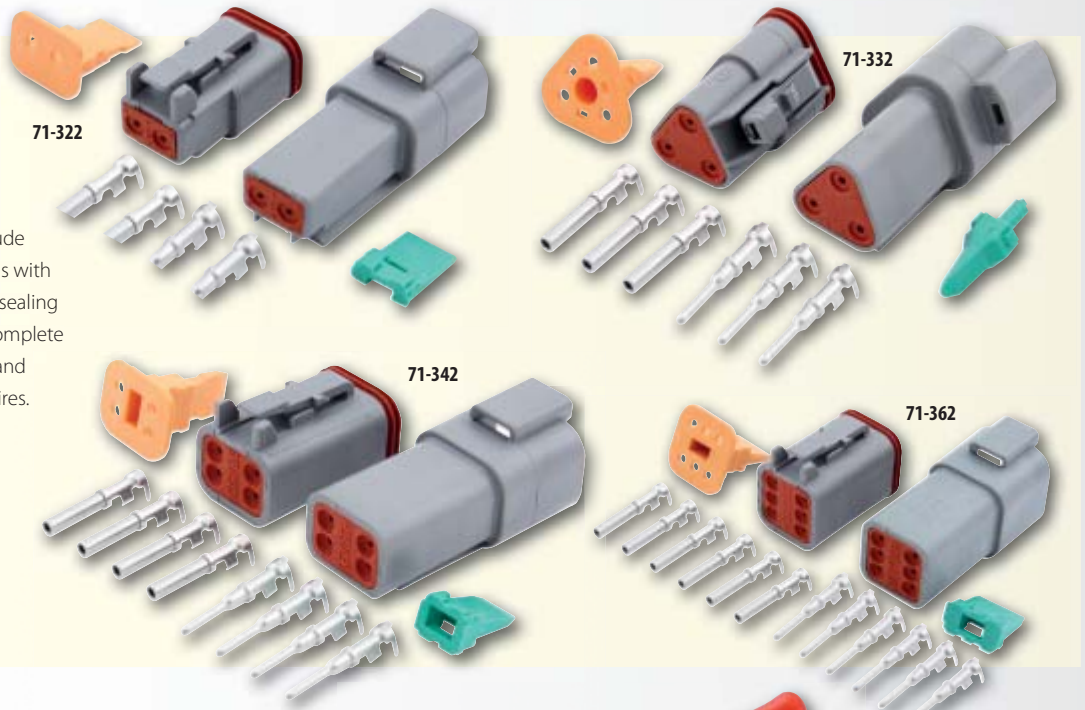


GAUGE & SWITCH PANEL ACCESSORIES

NEW

Deutsch Connectors

Durable, precision connectors include plastic male and female housing ends with indexed locks to securely lock, while sealing out dirt and moisture. Kits are sold complete with terminals, silicone rubber seals and strong crimp tabs for 12-18 gauge wires.



71-322	Deutsch Connector Kit, 2-Pin
71-332	Deutsch Connector Kit, 3-Pin
71-342	Deutsch Connector Kit, 4-Pin
71-362	Deutsch Connector Kit, 6-Pin

Economy Crimping Tool 50-397

Economically-priced tool serves a variety of crimping purposes.



Tire Pressure Gauges

The QuickCar 2-1/2" diameter tire pressure gauge is regarded as the most reliable in the industry. Offered with a choice of Dry, Glo or Liquid-Filled face. High quality gauges feature pressure relief valves, rubber shock rings and 14" long hoses with 45° air chucks and strain reliefs on each end.

Dry Gauges

56-020	0-20 PSI
56-040	0-40 PSI
56-060	0-60 PSI



Glo Gauges

56-022	0-20 PSI
56-042	0-40 PSI
56-062	0-60 PSI



Liquid-Filled Gauges

56-021	0-20 PSI
56-041	0-40 PSI
56-061	0-60 PSI



Tire Pressure Gauge Holster 56-010

Holder with belt loop keeps your tire gauge conveniently close and safe. May also be mounted in trailer or on tool boxes.



Digital Tire Pressure Gauge 56-085

The most accurate tire pressure gauge currently offered by QuickCar is calibrated to .5% accuracy. Gauge, which reads in PSI, Bar, KG or KPA, incorporates an easy-to-read backlit screen, auto shut-off for extended battery life, and a premium, 14" long whip hose with angled air chuck. 0-60 lb. gauge.



Economy Tire Pressure Gauges

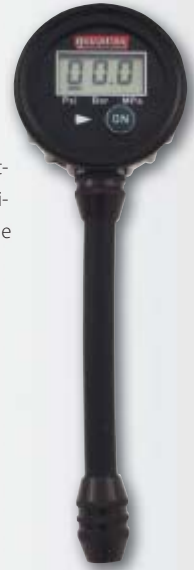


Economy Digital Tire Pressure Gauge 56-070

Economically-priced digital tire pressure gauge, which measures 0-100 PSI in 1/2 lb. increments and uses an auto-off feature for extended battery life, is more shock resistant than analog style gauges. Gauge includes a 14" long hose with 45° air chuck and bleeder for quick pressure adjustments.

Digital Pocket Tire Pressure Gauge 56-050

Convenient to carry or store, pocket-sized tire pressure gauge features digital accuracy. Digital, 2" diameter gauge includes a 4" long hose and reads in PSI, Bar and Mpa. Auto shut-off helps conserve battery life.



Economy Tire Pressure Gauges

Easy-to-read, 2" diameter gauges include shock rings, pressure relief valves and 12" flex hoses with 45° swivel air chucks.

56-009	0-20 PSI
56-007	0-40 PSI
56-008	0-60 PSI



Tire Inflator 56-065

Check tire pressures when inflating or deflating tires. Includes a 0-60 PSI dry gauge with shock ring and flex hose with 45° air chuck.



Tire Pressure Gauge Replacement Parts

Replacement gauge heads, flex hoses and rubber shock rings are offered for QuickCar's premium tire pressure gauges.

56-001	14" Flex Hose With Pressure Relief
56-002	Gauge Head, Dry 0-20 PSI
56-004	Gauge Head, Dry 0-40 PSI
56-006	Gauge Head, Dry 0-60 PSI
56-0022	Gauge Head, Glo 0-20 PSI
56-0042	Gauge Head, Glo 0-40 PSI
56-0062	Gauge Head, Glo 0-60 PSI
56-0021	Gauge Head, Liquid-Filled 0-20 PSI
56-0041	Gauge Head, Liquid-Filled 0-40 PSI
56-0061	Gauge Head, Liquid-Filled 0-60 PSI
56-003	Rubber Shock Ring



Ball Style Air Chuck 56-9002

Compact, 90° air chuck fits into the tightest, hard-to-reach areas, easing tire pressure adjustments. Air chuck has 1/4" NPT threads and fits all QuickCar tire gauges.

TIRE GAUGES

Aluminum Suspension Tubes



Manufactured in the USA from rigid, 6061 aluminum, QuickCar Suspension Tubes are up to 35% stronger than traditional hex or round units. Suspension tubes include precision machined ends, corrosion resistant black anodized finish and identification on the left hand threaded end. Unique design allows easy adjustments by hand or with a wrench. Choose from 1-1/8" O.D. with 5/8" threads, or 1-1/4" O.D. with 3/4" threads.

1-1/8" O.D. - 5/8" Threads		1-1/8" O.D. - 5/8" Threads		1-1/8" O.D. - 5/8" Threads	
62-070	7"	62-150	15"	62-230	23"
62-075	7.5"	62-155	15.5"	62-235	23.5"
62-080	8"	62-160	16"	62-240	24"
62-085	8.5"	62-165	16.5"	62-280	28"
62-090	9"	62-170	17"	62-457	45.7"
62-095	9.5"	62-175	17.5"	62-465	46.5"
62-100	10"	62-180	18"	62-477	47.7"
62-105	10.5"	62-185	18.5"	62-480	48"
62-110	11"	62-190	19"	62-487	48.7"
62-115	11.5"	62-195	19.5"	62-490	49"
62-120	12"	62-200	20"	62-500	50"
62-125	12.5"	62-205	20.5"	62-510	51"
62-130	13"	62-210	21"	62-600	72"
62-135	13.5"	62-215	21.5"		
62-140	14"	62-220	22"		
62-145	14.5"	62-225	22.5"		

1-1/4" O.D. - 3/4" Threads		1-1/4" O.D. - 3/4" Threads		1-1/4" O.D. - 3/4" Threads	
75-070	7"	75-165	16.5"	75-280	28"
75-075	7.5"	75-170	17"	75-290	29"
75-080	8"	75-175	17.5"	75-300	30"
75-085	8.5"	75-180	18"	75-310	31"
75-090	9"	75-185	18.5"	75-320	32"
75-095	9.5"	75-190	19"	75-330	33"
75-100	10"	75-195	19.5"	75-340	34"
75-105	10.5"	75-200	20"	75-350	35"
75-110	11"	75-205	20.5"	75-360	36"
75-115	11.5"	75-210	21"	75-370	37"
75-120	12"	75-215	21.5"	75-380	38"
75-125	12.5"	75-220	22"	75-390	39"
75-130	13"	75-225	22.5"	75-400	40"
75-135	13.5"	75-230	23"	75-410	41"
75-140	14"	75-235	23.5"	75-420	42"
75-145	14.5"	75-240	24"	75-430	43"
75-150	15"	75-250	25"	75-440	44"
75-155	15.5"	75-260	26"	75-600	72"
75-160	16"	75-270	27"		

CHASSIS COMPONENTS

Double Ended Suspension Tube Wrench 66-6275



NEW

Heavy duty steel, double ended wrench allows performing quick adjustments to QuickCar 5/8" or 3/4" O.D. suspension tubing.

Suspension Tube Ruler 66-100

NEW



Measure nearly any suspension component fitted with rod ends, including suspension tubes, tie rods, etc., quickly and precisely. Black powder coated ruler includes a locking thumb screw and provides precise measurements up to 36". Sold complete with aluminum adapters to measure components with 1/2", 5/8" or 3/4" rod ends. Optional adapters allow measuring parts with 1/4", 5/16" or 3/8" rod ends.

66-105	Ruler Adapters, Allows Measuring Components With 1/4", 5/16" Or 3/8" Rod Ends
66-106	Ruler Adapters, Allows Measuring Components With 1/2", 5/8" Or 3/4" Rod Ends (Included With 66-100)

Torque Absorbers

Track-proven to increase forward bite out of the turns with sustained traction down the straight away, QuickCar's torque absorbers are IMCA-legal, and are lighter than spring style units. CNC-machined units feature internal brass bushing and grease fittings to eliminate any possibility of bind, while the specially-threaded cap allows easy biscuit changes. Offered in three versions: Standard, uses two interior biscuits and is 12-1/2" long; Intermediate, uses three interior biscuits and is 13" long; and Long, uses four interior biscuits and is 14" long. Softer or harder durometer biscuits may be purchased separately for tuning purposes.

66-500	Standard Torque Absorber, 12-1/2" Long
66-400	Intermediate Torque Absorber, 13" Long
66-499	Long Torque Absorber, 14" Long



Torque Absorber Biscuit Tuning Kit 66-508

Offered for tuning purposes with QuickCar torque absorbers, kit includes (2) each different durometer biscuits; blue (extra soft), yellow (soft), red (medium) and black (hard). Biscuits may also be purchased separately.

66-501	Extra Soft Blue Biscuit (Each)
66-502	Soft Yellow Biscuit (Each)
66-504	Medium Red Biscuit (Each)
66-506	Hard Black Biscuit (Each)



Travel Indicator 66-512

Specialized tool fits QuickCar and other small O.D. torque absorbers and is used to determine travel of the unit during acceleration and braking. Installs easily. Sold complete with indicator rod, two indicator mounting brackets and required hardware.



Outlaw Torque Absorber 66-550

Steel bodied Outlaw Torque Absorber delivers as designed, providing exceptional forward bite on dry/slick track conditions. Torque absorber which is 15" long, is standard with red (medium durometer) biscuit, but softer or harder durometer biscuits may be purchased separately for tuning purposes.



Outlaw Torque Absorber Biscuits

Choose from four different rates. Biscuits are 3" diameter.

66-551	Extra Soft Blue Biscuit (Each)
66-552	Soft Yellow Biscuit (Each)
66-554	Medium Red Biscuit (Each)
66-556	Hard Black Biscuit (Each)



CHASSIS COMPONENTS

Steering Wheels

Quality dished aluminum or steel spoked steering wheels are offered with a choice of smooth red, blue or black grips. Choose from 15" or 17" diameter.

15"	
Steel	
68-003	Black
68-0031	Red
68-0032	Blue
Aluminum	
68-001	Black
68-0011	Red
68-0012	Blue



17"	
Steel	
68-004	Black
68-0041	Red
68-0042	Blue
Aluminum	
68-002	Black
68-0021	Red
68-0022	Blue



Steering Wheel Pads

Designed to provide driver protection upon impact. Pad attaches securely to steering wheel spokes with Velcro.

58-241	Red
58-242	Blue
58-243	Black

Molded Steering Wheel Pad 58-244

Molded black pad fits flat or dished three-spoke steering wheels.





NASCAR Steering Wheel Kill Switch 50-190

NASCAR-legal switch is designed for steering wheel mounting, providing driver the ability to quickly disable electrical system in the event of a crash

Hex Hub Button Style Aluminum Disconnect 68-010

Hex hub button style aluminum disconnect.



Hex Hub 360° Aluminum Disconnect 68-012

Comes complete with hardware and fasteners.



Fine Spline Hub 360° Aluminum Disconnect 68-015

Comes complete with hardware and fasteners.



68-0109



68-0129



68-0159

Weld-On Hub Steel Adapters

Also available separately, adapters are specifically made for QuickCar disconnects. Welds to 3/4" O.D. steering shaft.

68-0109	Fits Hex Hub Button Style (68-010)
68-0129	Fits Hex Hub 360° Style (68-012)
68-0159	Fits Fine Spline Hub 360° Style (68-015)

QuickScale System With Billet Pads 56-181

Premium, yet economically-priced scale system includes many desirable features and is backed by a full 2-year warranty. System includes two full screen displays; one that shows wheel weights, and another that includes all weights and percentages in up to five different modes. Precision, CNC-machined billet aluminum 15" scale pads offer accuracy within 1/10 of 1%. A built-in RFI filter eliminates possibility of radio frequency interference. Unit may be converted to kilograms, if desired. System is sold complete with scale pads and premium quality cables, all neatly packed in a foam-lined storage case.



CHASSIS SET-UP



Kart Scales 56-300

Engineered specifically for use with go-karts, system features precision, CNC-machined billet aluminum 8" x 10" scale pads. All information is displayed on a single screen with up to five different modes to choose from. Display weight with up to 1/10 of a pound and 400 lbs. per pad capacity. Backed by a full 2-year warranty. Includes scale pads and premium quality cables, all neatly packed in a foam-lined storage case.

Scale Pad Case 56-184

Heavy duty storage case is rugged enough for professional or commercial use. Case includes a hinged top and stores (4) 15" x 2-1/2" scale pads.



Ride Height Gauge 56-108

Easy-to-use ride height gauge is simply placed between the frame rail and the ground; once the actuator button is depressed, an etched stem pops-out and displays the current ride height. Compact, pocket-sized gauge has a range of 3-1/2" to 6".

Bump Steer Gauge 56-210

Chassis tool utilizes two gauges and uses a sturdy fixed frame to place jack on, accurately measuring toe during suspension travel, while allowing for adjustments to be made to bump steer. Includes multi-fit plate that fits 5 x 4.5", 5 x 4.75", 5 x 5" and Wide 5 (except snap cap applications).

Bump Steer Shim Kit	
56-207	Kit Includes One Each: .032", .064", .100", .200", .300" and .500" Shims
Multi-Hole Wheel Adapter Plate	
56-209	Adapts Wheels With 5 x 4.5", 5 x 4.75", 5 x 5" And Wide 5 Bolt Circle Patterns

NOTE: When using Bump Steer Gauge on Wide 5 snap cap applications, the Snap Cap Hub Adapter Kit (56-208) is required.



Snap Cap Hub Adapter Kit 56-208

Special adapters screw directly onto Wide 5, 5/8"-11 wheel studs, allowing compatibility with the Multi-Hole Wheel Adapter Plate (56-209) and the Bump Steer Gauge (56-210). Sold per pair.

Caster/Camber Gauge 56-131

Precision calibrated, Caster/Camber gauge is made from fully CNC-machined billet aluminum. Assembled on a 360° level bench, gauge measures up to 6° of camber and up to 8° of caster.

Caster/Camber Gauge Kit With Adapter	
56-130	Gauge With Magnetic Adapter
56-133	Gauge With Wide 5 Adapter
56-135	Gauge With GM Adapter
56-136	Gauge With Small Ford Adapter
Accessory/Replacement Gauge Adapters	
56-137	Magnetic Adapter
56-138	GM Adapter, 3/4"-20
56-139	Ford Adapter, 13/16"-20
56-142	Toyota/Legend Adapter, 19mm-1.5
56-143	Small Ford Adapter, 3/4"-16
56-144	Wide 5 Adapter, 1.813"-16
56-333	Kart Adapter, 5/8"-18



A-Arm Shim Kit 56-124

Kit includes one each of 1/16", 1/8", 1/4" and 1/2" aluminum upper A-arm shims with 6" centers and installation tabs. Shims are also available separately.

Kit Includes:	
56-120	1/16" Shim
56-121	1/8" Shim
56-122	1/4" Shim
56-123	1/2" Shim



Dunlop Style Caster/Camber Adapter 56-128

Fits 13" to 17" wheels and takes measurements from the wheel instead of the spindle. Perfect when screw-on adapters are not available. Caster/Camber gauge must be purchased separately.



CHASSIS SET-UP

Deluxe QuickAngle Tray

A replacement for the Smart Tray, the Deluxe QuickAngle Tray has added features including the ability to add a caster/camber gauge adapter, or use the included legs that attach directly to trailing arms, tie rods or chassis tubing, while the two-step base plate accepts the Smart Tool or other similar digital angle finders. Deluxe QuickAngle Tray offers digital, hands-free accuracy and is a great aid when determining angles, or while bending chassis tubing. Four versions are available to fit 1", 1.25", 1.50" or 1.75" dia. tubing. Legs may be changed to adapt tray to use with different size tubing.

56-167	Fits 1.25" O.D. Tubing
56-168	Fits 1.50" O.D. Tubing
56-169	Fits 1.75" O.D. Tubing
56-170	Fits 1.00" O.D. Tubing
Replacement Legs	
56-9141	1.25" Leg, Each
56-9143	1.00" Leg, Each
56-9144	1.50" Leg, Each
56-9145	1.75" Leg, Each



QuickAngle Kit

Kit includes both the Smart Tool and the Deluxe QuickAngle Tray in a handy foam-lined carrying case. Provides digital, hands free accuracy when determining the angles of chassis tubing, driveshafts, etc. Available with trays to fit either 1.25" or 1.00" chassis tubing.

56-161	Fits 1.25" O.D. Tubing
56-162	Fits 1.00" O.D. Tubing



Smart Tool Digital Level 56-163

Ensure that chassis tubing, driveshaft angles and suspension components are level and plumb. Particularly useful during chassis fabrication. Tool emits an audible beep at level and plumb and shuts off automatically.



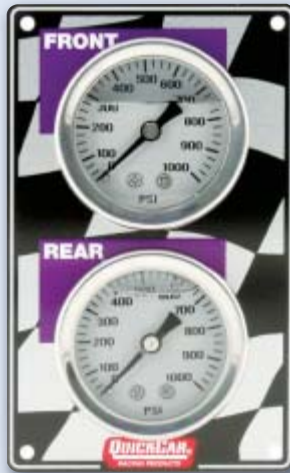
Brake Bias Gauge Panels

Brake bias gauge panels are fitted with two 1-1/2" diameter, liquid-filled pressure gauges that read from 0-1,000 PSI, allowing driver to track pressure at both the front and rear calipers. Panels include bleeders to evacuate air from the system.

Replacement gauge: 611-90

Vertical Mini Brake Bias Gauge 61-101

Vertical design panel is 2-3/4" wide x 4-1/2" high.



Horizontal Mini Brake Bias Gauge 61-103

Horizontal design panel is 4-1/2" wide x 2-3/4" high.

Brake Caliper Pressure Test Kits



Brake system troubleshooting tool allows checking brake pressure at the caliper, quickly and accurately. Each kit is packed in a neat, foam-lined case.

64-510	1/8" NPT, Most Aftermarket Calipers
64-511	10mm-1.50, GM Metric Calipers



Brake Bleeder Bottle 66-700

Eliminates messy brake bleeding. Bleeder bottle has a high grade surgical hose for a secure seal on bleeders and includes an extra nipple to put your hose on once bleeding is complete. Steel lanyard allows hanging bottle on chassis during bleeding process.



Tire prep and selection are key to winning races and QuickCar offers a variety of tools to closely monitor them.

Chrome Valve Stems

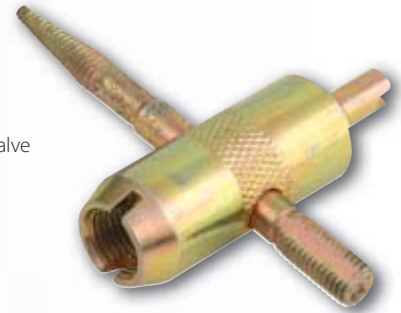
Premium, chrome valve stems are sold each, or four to a card.

56-115	Chrome Valve Stem, Each
56-116	Chrome Valve Stems, Four To A Card



Valve Core Remover 56-119

Compact, pocket-sized tool allows quick valve core replacement and valve stem repair.



Aluminum Tire Caliper 64-706

Lightweight aluminum tire caliper measures circumference quickly and accurately, from 65" to 115".



Tire Marker Kit 64-401

Perfect for marking sizes, circumferences and locations, kit includes a silver tire pen and white tire marker.

64-400	White Tire Marker
64-403	Silver Tire Pen



TIRE MANAGEMENT

Aluminum Toe Plates 64-704

Simple, yet accurate. Simply lean against each front tire and measure the distance between the two. Includes (2) 12' tire tapes.

64-703	Replacement Tire Tape
--------	-----------------------



Tire Scribe 64-720

Used when checking toe settings, Tire Scribe allows making a true running line on the outside face of the tire.



Tire Management Kit 56-105

All-in-one kit includes deluxe tire durometer (56-155), tire tread depth gauge (56-104) and tire tape (56-110), all in a foam-lined plastic storage case.



Tire Tread Depth Gauge 56-104

Monitor tire wear and ensure that your complete tire patch has maximum track contact. Durable, aluminum housed gauge includes professional scale graphics and allows measuring tread depth in 1/32" increments. Sold complete with carrying pouch.

Deluxe Tire Durometer 56-155

Determine tire hardness effectively and accurately. Gauge has a range of 0-100 durometer and is sold with carrying pouch.



Tire Tape

Hawk tip tire tape grabs onto the edge of virtually any surface, allowing easy measurements by just one person. Tape has a magnetic back and measures up to 10'.

56-110	Hawk Tip Tire Tape
56-111	Hawk Tip Tire Tape, Carded



Timing systems include clipboard, choice of two stop watches, (5) qualifying sheets and (5) lap chart sheets, and choice of acrylic or aluminum clipboard. QuickCar acrylic or aluminum clipboard timing systems are visually unique, comfortable to hold, and durable.



Dual Timing Systems

Dual timing systems are complete with (2) Robic SC505 stop watches, acrylic clipboard, (5) qualifying sheets and (5) lap chart sheets. Choose from systems with red, black, yellow, or white clipboards.

51-051	Red
51-052	Black
51-053	Yellow
51-054	Red, White And Blue



Dual Aluminum Timing Systems

Systems include (2) Robic stop watches, aluminum clipboard, (5) qualifying sheets and (5) lap chart sheets. Choose from systems with Robic SC848 or SC505 stop watches.

51-070	With Two Robic SC505 Stop Watches
51-071	With Two Robic SC848 Stop Watches



20-Lap Timing System With Acrylic Clipboard

Designed for monitoring 20-lap events, system includes (2) QuickCar stop watches, acrylic clipboard, (5) qualifying sheets and (5) lap chart sheets. Choose from systems with red, black, yellow or white clipboards.

51-0512	Red
51-0522	Black
51-0532	Yellow
51-0542	White



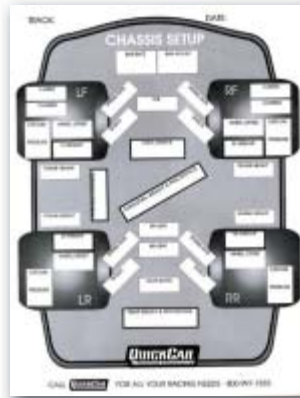
20-Lap Timing System 51-064

Timing system with aluminum clipboard is designed for 20-lap events, complete with (2) QuickCar stop watches, aluminum clipboard, (5) qualifying sheets and (5) lap chart sheets.

Lap Chart Pads

Lap charts are used to record lap times for practice, heat races and feature events. Each pad includes 50 sheets.

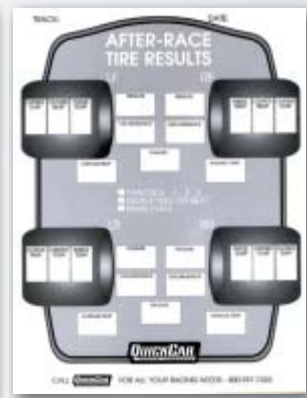
51-201	Chassis Set-Up
51-210	Before Race
51-215	After Race
51-230	50-Lap
51-235	100-Lap
51-236	Qualifying Organizer
51-237	Race Day Check List



51-201



51-210



51-215



51-230



51-235



51-236



51-237

Clipboards

Our clipboards are so easy-to-hold, practical and attractive, that everyone at the track will want one. Choose from acrylic units in red, black, yellow or white, or a satin aluminum model.

51-041	Red Acrylic
51-043	Black Acrylic
51-044	Yellow Acrylic
51-046	White Acrylic
51-048	Aluminum



51-041



51-043



51-044



51-046



51-048

TIMING SYSTEMS



**Stop Watch
51-004**

Precision stop watch features a 20-lap memory that displays lap, splits, fastest, slowest and average lap. Instantly displays previous lap while timing existing lap.

**Robic SC848 Stop Watch
51-017**

Stop watch includes 300-lap dual memory, speed, time and number recall. Backlight illuminates entire display.



**Robic SC554 Stop Watch
51-027**

Stop watch includes a 30-lap memory of speed, lap time and number, while fastest and average lap times may be viewed on demand.



Robic SC505 Stop Watches

The SC505 series includes a 5-lap memory and auto lap counter. Choose from red, black, yellow or blue.

51-037	Red
51-038	Black
51-039	Yellow
51-040	Blue



Sleeved Race Spark Plug Wire

Premium quality spark plug wire offers quick energy transfer, less than 40 ohms/ft. of resistance, high EMI (Electro Magnetic Interference) and RFI (Radio Frequency Interference) suppression. Flexible, high strength wire is constructed using a Kevlar core and nickel-copper alloy wound conductor that is covered with two full layers of silicone. Silicone, resulting in a 11.5mm O.D. impregnated fiberglass provides up to 1,400° F. of heat resistance. High temperature silicone boots resist temperatures up to 600° F., while the posi-snap terminals provide a secure connection. Cylinder numbers are labeled on both ends. Compatible with most ignition systems.



SPARK PLUG WIRES

40-100	SB Chevy Wire Set, Red, 24" Coil Wire
40-300	SB Chevy Wire Set, Black, 24" Coil Wire
40-150	SB Chevy Wire Set, Red, Without Coil Wire
40-350	SB Chevy Wire Set, Black, Without Coil Wire
40-500	GM LS1 Wire Set, Red
40-700	GM LS1 Wire Set, Black
40-121	Red Coil Wire, 12" HEI/HEI
40-123	Black Coil Wire, 12" HEI/HEI
40-125	Red Coil Wire, 12" HEI/Socket
40-127	Black Coil Wire, 12" HEI/Socket
40-181	Red Coil Wire, 18" HEI/HEI
40-183	Black Coil Wire, 18" HEI/HEI
40-185	Red Coil Wire, 18" HEI/Socket

40-187	Black Coil Wire, 18" HEI/Socket
40-241	Red Coil Wire, 24" HEI/HEI
40-243	Black Coil Wire, 24" HEI/HEI
40-245	Red Coil Wire, 24" HEI/Socket
40-247	Black Coil Wire, 24" HEI/Socket
40-361	Red Coil Wire, 36" HEI/HEI
40-363	Black Coil Wire, 36" HEI/HEI
40-365	Red Coil Wire, 36" HEI/Socket
40-367	Black Coil Wire, 36" HEI/Socket
40-421	Red Coil Wire, 42" HEI/HEI
40-423	Black Coil Wire, 42" HEI/HEI
40-425	Red Coil Wire, 42" HEI/Socket
40-427	Black Coil Wire, 42" HEI/Socket

Automatic Fan Kit 60-037

Electric fan kit includes an adjustable thermostat, which automatically activates or deactivates fan as needed. Sold complete with 14" diameter fan, thermostat, relay, wiring harness and connectors. Fan is factory pre-set at +/- 200° F, but may be adjusted as desired. Requires a 15-1/2" x 3" mounting area. May be set-up as pusher or puller. Fan may also be purchased separately.

14" Electric Fan Only 60-035



Curved Blade Automatic Fan Kit 60-041

Thermostat automatically activates or deactivates fan at a pre-set, adjustable temperature. Sold complete with efficient, 16" diameter curved blade electric fan, thermostat, relay, wiring harness and connectors. Fan is factory pre-set at +/- 200° F, but may be adjusted as desired. Requires a 17" x 2-3/4" mounting area. May be set-up as pusher or puller. Fan may also be purchased separately.

16" Curved Blade Electric Fan Only 60-034

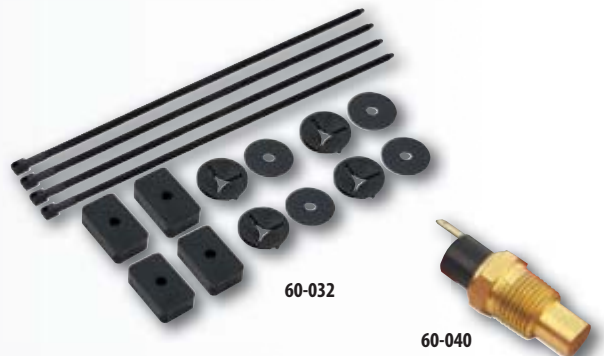
Electric Fan Relay Kit 60-039

Kit includes 40 Amp relay, adjustable water temperature sender switch and wiring harness.



Electric Fan Accessories

60-032	Electric Fan Mounting Kit
60-040	Adjustable Water Temperature Sender Switch, Pre-Set To +/-200° F.



60-032

60-040

NACA Ducts

Designed specifically for ducting air into the car, providing air flow to cool the driver, brakes, rear end cooler, etc. Ducts may be mounted to virtually any flat surface and accept a 3" diameter hose.

60-000	Single Clear
60-003	Single Black
60-010	Dual Clear
60-013	Dual Black
60-015	Helmet Hose Reducer



Bumper Ducts

Bumper ducts direct air flow to brakes, preventing overheating and prolonging brake life. Durable and easy to install.

60-008	Single
60-009	Dual
60-005	Headlight Duct

NACA Duct Hose

Wire reinforced, 3" diameter duct hose will not collapse and is used to deliver continuous air flow to high temperature areas.

60-020	Neoprene Hose For Standard Temperatures, 10' Long
60-030	Silicone Hose For Extreme Temperatures, 11' Long
60-018	Helmet Hose With Cuffs, 4' Long



Throttle Linkage Kit 64-162

Kit includes 23" threaded aluminum tube, rod ends, carburetor bushing and return springs.



Throttle Stop Brackets

Offered for popular Holley carburetors, rigid, fully CNC-machined black anodized aluminum bracket includes adjustable throttle stop.

64-157	For Holley 4BBL
64-158	For Holley 2BBL

Throttle Return Spring Kit 65-096

Includes carb mount bracket, (4) return springs and required hardware.



Tall Aluminum Carburetor Nut With O-Ring Seal

Carb nut includes 5/16" threads. Choose from red anodized or natural finish.

64-148	Red
64-149	Aluminum



Throttle Return Springs 64-169

Includes (2) throttle return springs.

Aluminum Carburetor Hat 64-146

Durable, machined aluminum carb hat protects engine from dirt and debris when air cleaner has been removed.



Sure Seal Ring 65-106

Aluminum, 1/2" long O-ringed spacer installs between the carburetor and air cleaner, providing increased clearance for throttle linkage, HEI distributor, etc.



**Door Bar Pad
58-210**

Closed cell padding offers added driver protection from hard surfaces inside a race car including door bars and seat supports. Pad, which is 36" x 48" in size, may also be used to increase comfort in racing seats. Not fireproof.



Roll Bar Padding

Closed cell foam progressively absorbs shock and increases density as it is compressed. Offset inside diameter allows installing thicker padding toward driver for added protection. Sold in 3' lengths.



58-231	Red
58-221	Red, Case Of 12
58-232	Blue
58-222	Blue, Case Of 12
58-233	Black
58-223	Black, Case Of 12
58-234	Yellow
58-224	Yellow, Case Of 12
58-235	Orange
58-225	Orange, Case Of 12



**Premium Black Cable Ties
58-250**

Black, 15" long cable ties are made from weather resistant nylon and include metal locking bars in head to provide a reliable, locking force. Domed top ties include smooth edges and a high strength, low thread force. Sold in packs of 50.

**Leg Guard Heat Shield
60-078**

Heat shield wraps around driver's calf, offering protection from exhaust heat transfer. Velcro attachment allows quick installation or removal. Sold each.



**SFI-Approved
Roll Bar Padding**

Fire resistant roll bar padding meets SFI 45.1 specifications, won't melt in the event of a fire and offers 180° coverage to roll bar tubing. Sold in 3' lengths. Offered in black only.

58-211	1-5/8" To 2" O.D. Roll Bar Padding
58-212	1-1/4" To 1-3/4" O.D. Roll Bar Padding



Nylon Wire Ties

Secure roll bar padding, electrical wiring, gauge lines, etc. Heavy duty, 14" long wire ties are sold in bags of 100.

58-236	Orange
58-237	Black
58-238	Red
58-239	Blue
58-230	Yellow

SAFETY EQUIPMENT

Deluxe 5-Point Racing Harness

Bolt-in style, 5-point racing harness features heavy duty, forged steel racing buckle, 3" wide shoulder and lap belts, and 1" wide anti-submarine belt. Harness meets stringent SFI 16.1 specifications. Optional sternum straps are also available separately.

58-011	Red
58-012	Blue
58-013	Black



Sternum Straps

Strap provides increased driver safety by holding the shoulder harness together in the event of an impact.

58-021	Red
58-022	Blue
58-023	Black

Harness Pads

Pads attach to racing harness and increase driver comfort, particularly when belts are cinched down. Sold per pair.

58-024	Red
58-025	Blue
58-026	Black



Arm Restraints 58-020

Designed for use in open cockpit cars, restraints keep arms contained within the car. Offered in black only, restraints are sold per pair.



Dual Anti-Submarine Belt 58-016

Dual anti-submarine 1" wide belt converts traditional 5-point racing harness into a 6-point style. Offered in black only.



Neck Braces

Neck brace features a full, 360° design, which steadies the driver's head, increasing both comfort and protection. Velcro closure allows quick removal or replacement.

58-051	Red
58-052	Blue
58-053	Black



Fireproof Shifter Boot 60-045

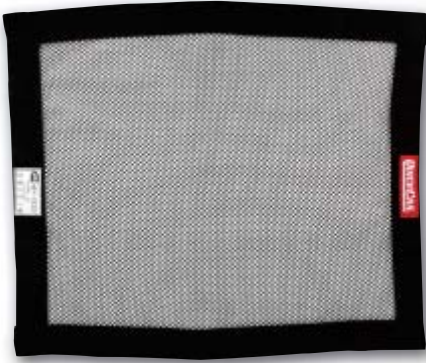
Shifter boot prevents heat or flames from entering the driver's compartment. Sold complete with mounting plate kit.



Triangle Window Nets

Typically used in sprint or midget applications, but may also be used on late models or modifieds.

58-047	Red
58-048	Blue
58-049	Black



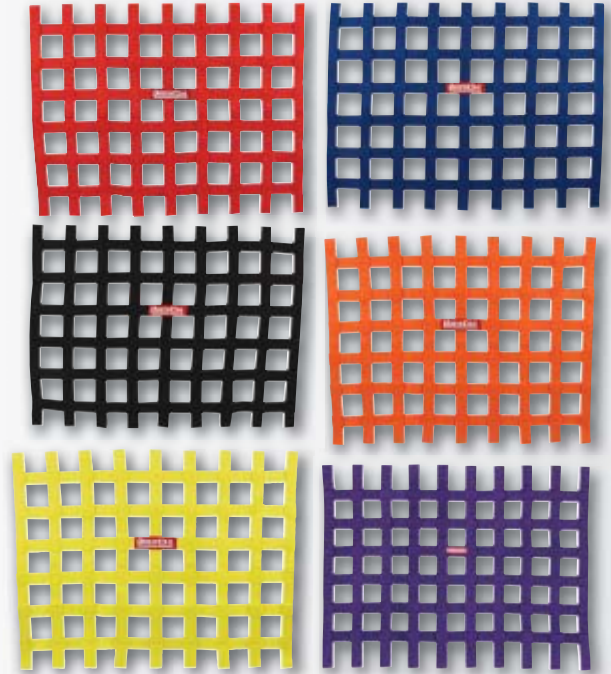
Mesh Window Net 58-032

Mesh style window net increases driver vision, yet stops smaller debris when compared to traditional ribbon-style nets. Rectangular net is 18" x 22" and offered in black only. Meets SFI 27.1 specifications.

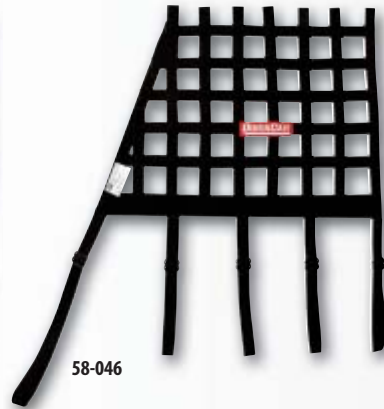
Window Nets

Standard, ribbon style window net is 24" x 18" in size.

58-041	Red
58-042	Blue
58-043	Black
58-034	Yellow
58-035	Orange
58-036	Purple



58-044

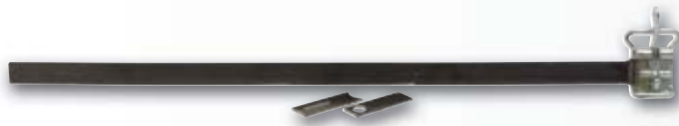


58-046

Angle Window Nets

Angle window nets, in standard or with extended lower mounting straps, are 17" wide at top, 22" wide at bottom x 17" high, and meet SFI 27.1 specifications. Black only.

58-044	Angle Window Net
58-046	Angle Window Net With Extended Lower Straps



Window Net Installation Kit 58-030

Lever latch release style kit includes 1" x 3/16" thick x 26" long steel bar, which anchors the window net, and necessary brackets for mounting.



Spring-Loaded Window Net Installation Kit 58-031

Spring-loaded rod eliminates conventional latch release, easing driver entry and exit. Pushing against the handle releases or engages the window net. Sold complete with 9/16" diameter x 26-1/2" long spring-loaded tube, 3/4" flat aluminum strap for bottom of net, and mounting brackets.

Impact Crimper 64-020

Tool is designed for crimping standard power rings onto battery cables for a permanent termination.



Camloc Tool 64-262

Engineered specifically for use in the installation of Camloc fasteners.



Tire Tape

Hawk tip design securely grabs onto virtually any surface and won't pull loose. Includes a magnetic back and measures up to 10'.

56-110	Tire Tape
56-111	Tire Tape, Carded



Safety Wire 64-015

Includes 1 lb. of .032" diameter safety wire.



Safety Wire Pliers 64-010

Rugged pliers include an end bearing for smoother, faster twisting, particularly in tight areas where a second pull is needed.



AN Aluminum Angle Head Wrench Set 64-709

Aluminum AN wrenches feature an angle head design for improved fitting access. Five-piece set includes -6AN, -8AN, -10AN, -12AN and -16AN.



AN Aluminum Wrench Set 64-708

Five-piece aluminum wrench set includes -6AN, -8AN, -10AN, -12AN and -16AN.



Oil Filter Cutter 64-730

Quickly open oil filters to check for potential engine problems. Heavy duty, billet aluminum tool features a razor sharp, hardened cutter for an extended life.

Brunnhoezl Aluminum Jack 64-086

Deluxe, lightweight billet aluminum 3-pump jack is manufactured in the USA. Hand assembled and tested prior to shipment. Completely rebuildable.



Aluminum 6-Pump Pit Jack 64-087

Lightweight, high quality aluminum 6-pump jack features a 3,000 lb. capacity. Low profile jack rolls under the lowest slung race chassis, with a maximum lifting height of 17-1/2".

Dirt Wing 64-088

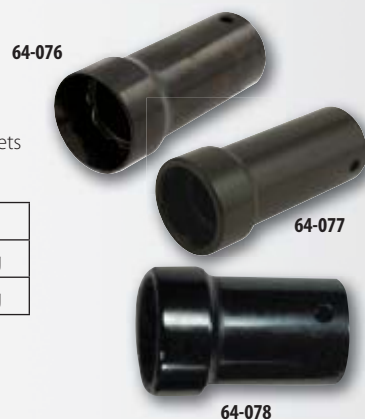
Provides a sturdy platform when using the 64-087 pit jack on soft or uneven surfaces.



Pit Sockets

The same steel, 1/2" drive sockets used by many top racing teams.

64-076	1" Socket, 3-1/4" Long
64-077	Pro 1" Socket, 3-1/4" Long
64-078	Pro 1" Socket, 2-1/4" Long



Cleco Fasteners

Pin-style fasteners provide quick, easy installation of sheet metal during initial fitting. May be used with material up to 1/4" thick.

64-175	1/8" Clecos, 25 Pack
64-176	3/16" Clecos, 25 Pack



Cleco Pliers 64-180

Specialized tool is used to install or remove Cleco fasteners.



Weather Pack Terminal Tool 50-399

Tool is used to remove male and female pin terminals from Weather Pack connectors.



TOOLS

Carburetor Box 64-140

Protect expensive carburetors from dirt and debris. Ideal for storage or transport, container accepts popular Holley 4150/4160 4BBL carburetors and includes a locking lid.



Plastic Carburetor Hat 64-145

Cover protects engine when air cleaner has been removed. Hat includes provision to hold eight spark plugs.



Plastic Caps And Plugs 64-225

Commonly used to keep debris out of spare or stored fuel pumps, regulators, dry sump pumps, etc. Includes (5) of each size, -3AN thru -16AN.



Plastic Carburetor Tray 64-150

Tray sets directly atop carburetor, protecting engine when air cleaner has been removed, while providing a convenient sport for tools or components when servicing engine.



Helmet Hook

Lightweight anodized aluminum hook, which clamps directly to roll bar, provides an anchor for helmet strap.



Gear Box 64-230

Durable plastic box stores and protects matched quick change gear sets.



66-920	1-3/4" Tube Mount
66-936	1-1/2" Tube Mount

Drink Holder With Bottle

Lightweight, anodized aluminum holder clamps directly to roll bar near driver, providing a convenient spot for a cool drink.

66-922	1-3/4" Tube Mount
66-933	1-1/2" Tube Mount
66-934	Replacement Drink Bottle

Radio Boxes

Aluminum radio box has a padded insert to absorb vibration. Accepts most racing radios and clamps directly to roll bar tubing.

66-923	1.75" Tube Mount
66-931	1.50" Tube Mount



Aluminum Coil Clamps

Anodized aluminum bracket allows mounting of ignition coil directly to firewall or chassis tubing.

66-925	Firewall Mount
66-927	1-3/4" Tube Mount
66-929	1-1/2" Tube Mount



Coil Selector Mount 66-914

Aluminum mount clamps directly to 1-3/4" dia. roll bar tubing and accepts an ignition coil selector.



Roll Bar Clamp Reducer 66-908

Lightweight aluminum reducer is used to adapt existing radio boxes, drink bottle holders, etc. from 1-3/4" to 1-1/2" diameter tubing.



66-754

Convex Mirror

Special convex mirrors provide a wide rear view of the competition. Choose from 14" or 17" wide mirrors. 14" wide model may be purchased as a kit, complete with mounting bracket that clamps directly to 1-3/4" diameter roll cage tubing. Available 17" mirror may be mounted using the 66-756 bracket, purchased separately.



66-756

Vent Clamps

Clamp-on breather, ideal for use with transmissions, rear ends, etc. clamps directly to chassis tubing.

66-937	1-3/4"
66-938	1-1/2"
66-9381	Replacement Element



66-752	14" Wide Mirror Kit With Mounting Brackets
66-754	14" Wide Mirror Only
66-756	Mounting Bracket Only, 1-3/4" Dia., Pair
66-757	17" Wide Mirror Only



QuicShine 99 64-800

Shine up your hot rod with a clean, easy spray on and wipe off application. 12 oz. aerosol can.

Line Clamps

The professional method when securing fuel lines, electrical wiring, etc. to chassis. Rubber coated clamps are sold ten to a card.

66-850	1/4" Clamp
66-852	3/8" Clamp
66-854	1/2" Clamp
66-856	5/8" Clamp
66-858	3/4" Clamp
66-860	1" Clamp



QUICKCAR EXTRAS



Spoiler Supports

Rigid, 8" long lightweight aluminum bracket allows precise spoiler angle adjustments. Available spoiler support washers proved an added, professional fit.

66-941	Spoiler Support, Each
66-942	Spoiler Support Washers, Four To A Card

Fender Supports With Mounting Bracket 66-950

Fender supports are flexible and resilient. Supports, which are 32" long, spring straight when fender is pulled back out. Sold in pairs, complete with mounting brackets.



64-260

64-261



64-262

Camlocs

Ideally used when panels need to be removed frequently. A one time installation that involves no loose parts.

64-260	Large Camlocs, Pair
64-261	Small Camlocs, Pair
64-262	Camloc Tool

Chrome Valve Cover Breathers

Breathers clamp directly to valve covers using breather tubes and are complete with shield. Breathers are offered to fit 1-3/8" or 1-1/2" diameter breather tubes.

65-192	Shielded Breather, Fits 1-1/2" Breather Tube
65-196	Shielded Breather, Fits 1-3/8" Breather Tube



65-192



65-196



Hood Pins

64-208	Aluminum Hood Pin Kit
64-210	Hood Pin Clips, Pair
64-211	Hood Pin
64-212	Scuff Plate

Header Wrap 60-050

Dyno tests have proven that lower engine compartment temperatures combined with increased internal header temperatures provide more horsepower. Premium vermiculite tape wraps around headers, keeping heat in. Includes 2" wide x 100' long roll, enough to wrap a set of V-8 headers.



Tie Downs

Designed for securing vehicles or pit equipment, tie downs are 8' long, include 5,000 lb. capacities and feature large, heavy duty handles for easy operation.

64-253	Ratchet Tie Down
64-255	Ratchet Tie Down With Axle Strap
64-257	Two Foot Axle Strap



64-257

64-255

64-253



Kart Scales 56-300

Engineered specifically for use with go-karts, system features precision, CNC-machined billet aluminum 8" x 10" scale pads. All information is displayed on a single screen with up to five different modes to choose from. Displays weight with up to 1/10 of a pound and a 400 lbs. per pad capacity. Backed by a full 2-year warranty.



Kart Adapter 56-333

Special 5/8"-18 threaded adapter is designed for use with the QuickCar 56-131 caster/camber gauge.



20-Lap Timing System 51-064

Timing system, designed for 20-lap events, is complete with (2) QuickCar stop watches, aluminum clipboard, (5) qualifying sheets and (5) lap chart sheets.



Economy Tire Pressure Gauge 56-009

Easy-to-read 2" diameter gauge includes shock ring, pressure relief valve and 12" long flex hose with 45° swivel air chuck. Reads 0-20 PSI.

Digital Tire Pressure Gauge 56-085

The most accurate tire pressure gauge currently offered by QuickCar is calibrated to .5% accuracy. Gauge, which reads in PSI, Bar, KG or KPA, incorporates an easy-to-read backlit screen, auto shut-off for extended battery life, and a premium, 14" long whip hose with angled air chuck. Reads 0-60 PSI.





Decals

Racing decal is 3" x 11" contingency size.

Shirts

Emblazoned with a large QuickCar logo on the back and a small logo on the left front chest, T-shirt is a 90% cotton/10% polyester blend and pre-shrunk.

APP-S	Small
APP-M	Medium
APP-L	Large
APP-XL	X-Large
APP-XXL	XX-Large



V-neck design T-shirt includes small QuickCar logo on the left front chest. Made from pre-shrunk, 90% cotton/10% polyester blend.

APP-FMM	Medium
APP-FML	Large



Made from 90% cotton/10% polyester blend and pre-shrunk, polo shirt features the QuickCar logo on the left front chest.

APP-POLOL	Large
APP-POLOXL	X-Large



Hat APP-A-HAT

Black/white QuickCar hat includes an embroidered logo and adjustable head band.



WIRING HARNESS MEASURING GUIDE

Does the car have a Ford or Chevy engine? _____

Is it a single ignition, dual ignition or HEI? _____

Is the tachometer an analog or digital? _____

Is it a dirt or asphalt car? _____

Is a crank trigger or dual pickup distributor being used? _____

Is an electric 3-wheel brake switch being used? _____

Please measure the following; measure how the wires will be routed.

If possible, sketch a rough drawing of where the parts are mounted in the car using the below illustration.

IGNITION BOX TO:

Coil: _____

Distributor: _____

Switch panel: _____

Tachometer: _____

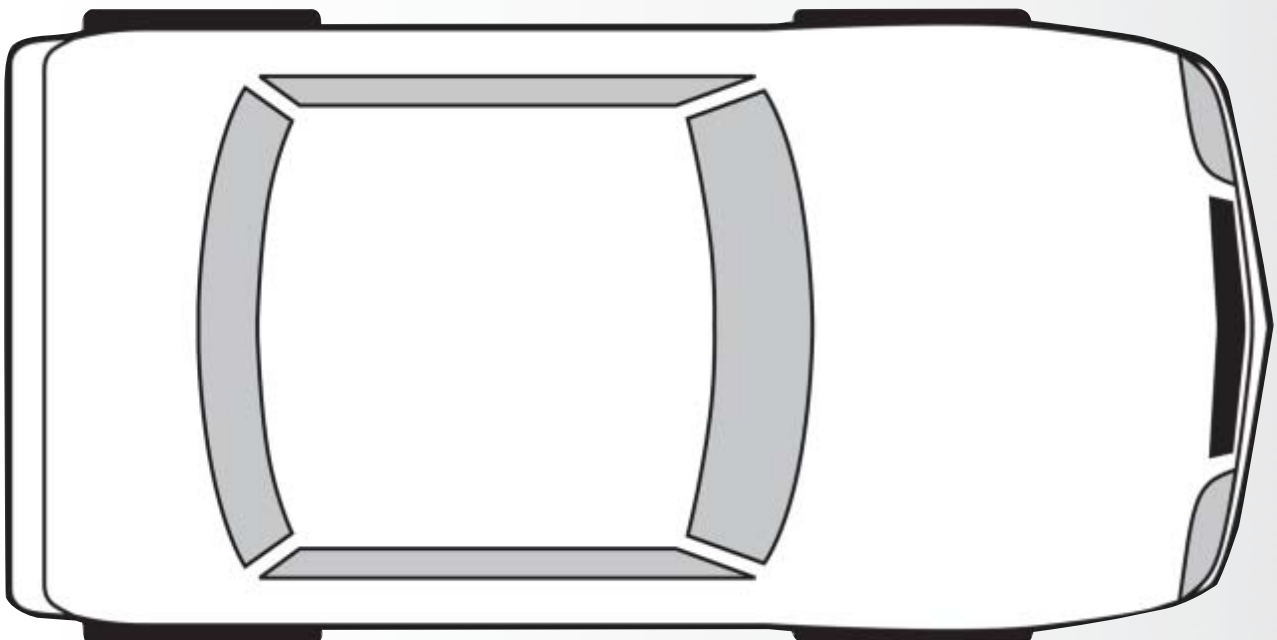
SWITCH PANEL TO:

Solenoid: _____

Gauge Panel: _____

Tachometer: _____

Distributor: _____



A

A-Arm Shim Kit 53

Air Cleaner Spacer Ring 64

Air Ducts 63

Aluminum Jack 69

Dirt Wing..... 69

AN Wrenches 68

Apparel..... 74

Arm Restraints..... 66

Auto Meter Gauge Panels 34-41

B

Battery Cable..... 8

Boots.....2, 9

Quick Disconnects..... 10

Stud Feed-Thru..... 10

Terminals7, 9

Battery Charging Posts.....2, 9

Mounting Bracket2, 9

Battery Disconnects 11

Boots.....2, 11

Jumper Wires 11

Brake

Bias Panel 55

Bleeder Bottle 55

Caliper Pressure Kit 55

Brake Ducts 63

Hose..... 63

Bump Steer Gauge 53

C

Cable Ties 65

Camlocs 72

Tool.....68, 72

Caps and Plugs 70

Carburetor

Box 70

Hat.....64, 70

Nut..... 64

Tray..... 70

Caster/Camber Gauge 53

Adapters 53

Chassis Height Gauge 52

Check Lists 59

Circuit Breaker 21

Clamps, Line 71

C (Cont.)

Cleco Fasteners..... 69

Pliers..... 69

Clipboards..... 59

Coil, Ignition

Clamps..... 71

Selector Mount..... 71

Wires..... 61

Computer Scales.....52, 73

Control Arm Shim Kit 53

D

Deutsch Connectors4, 45

Dirt Wing 69

Disconnects, Master 11

Distributor Wire..... 7

Door Bar Pad 65

Drink Bottle Holder 70

Bottle 70

E

Electric Fan 62

Mounting Kit 62

Relay Kit..... 62

Electrical Outlets 10

Electrical Wire..... 7

Terminals 7

Exhaust Header Wrap..... 72

Extreme

Gauges/Panels..... 26-27, 31

Switch Panels 19

F

Fans 62

Fasteners 69-72

Firewall Grommets 10

Fittings, AN/NPT 32

Fuel Pressure Isolator4, 32

G

Gauges

Panels 3, 22-23, 26-30

Replacement 22-23, 31, 34-41

Sprint 3, 22-23

Gear Tote/Box 70

Ground Cables 8

H

Harness Pads 66

Header Wrap 72

Heat Shrink Tubing 7

Helmet

Hook 70

Hose 63

Hood Pins 72

Hydraulic Jack 69

I

Ignition Box Mounting Plates 12

Ignition Control Panels..... 2, 14-19

Mounting Brackets 20

Wiring Harnesses2, 13, 15-17

Ignition Switch.....20, 21

Boot 21

Starter Button..... 21

Switch Extensions 20

Ignition System..... 12

Ignition Wiring Adapters 2, 12, 45

Impact Crimper.....7, 68

J

Jack, Hydraulic 69

Dirt Wing..... 69

K

Karting Accessories 73

L

LED Lights/Bulbs..... 33

Strips..... 33

Leg Heat Shield..... 65

Line Clamps 71

M

Manifold, Oil Temperature4, 32

Master Disconnects 11

Boots..... 2, 11

Jumper Wires 11

Mirror 71

Mounting Brackets..... 71

Mounting Plate, Ignition 12

N

NACA Ducts..... 63

Neck Brace..... 66

Nylon Ties..... 65

O
Oil Filter Cutter 69
Oil Temperature Manifold4, 32

P
Pilot Light 21
Pit Jack 69
Pit Sockets 69
Pressure Line Kits 32
Pull Bar5, 49

Q
Qualifying Organizer..... 59
QuickAngle Tool 54
QuickFire Ignition System..... 12
QuickShine 99 71

R
Racing Harness..... 66
Radio Box 70
Ratchet Tie Downs 72
Rear View Mirror..... 71
 Mounting Bracket2, 9
Remote Electrical Outlets 10
Remote Starter Button 20
Replacement Gauges
 Auto Meter 34-41
 Extreme 31
 Sprint 22-23
 Standard 31
 Stewart Warner 42
Ride Height Gauge 52
Roll Bar Padding 65

S
Safety Wire 68
 Pliers 68
Scales52, 73
 Case 52
 Kart 73
Seat Belts 66
Senders, Pressure/Temperature .. 32
Shifter Boot 66
Smart Tool 54
Solenoid, Starter 11
Spark Plug Wire Sets.....4, 61
Spoiler Supports..... 72

S (Cont.)
Starter Solenoid 11
 Jumper Wires 11
Steering Wheel 50
 Disconnect 51
 Kill Switch..... 51
 Pads 50
Sternum Strap 66
Stewart Warner Gauge Panels.... 42
Stop Watch 60
Stud Feed-Thru 10
Submarine Belt..... 66
Sure Seal Spacer Ring 64
Suspension Tubes5, 48
 Ruler5, 48
 Wrench.....5, 48
Switches, Toggle 20-21

T
Tachometers..... 25
Tape Measure57, 68
Temperature Adapters24, 32
Terminals, Electrical 7
Throttle Linkage..... 64
 Return Springs 64
Throttle Stop 64
Tie Downs 72
Timing Systems..... 58

Tire
 Caliper 56
 Durometer 57
 Gauge 46-47
 Gauge Holster 46
 Management Kit 57
 Markers 56
 Scribe 56
 Tape57, 68
Toe Plates 56
Toggle Switch..... 21
 Aircraft Cover 21
 Boot 21

Tools
 AN Wrenches 68
 Camloc68, 72

S (Cont.)
Tools (Cont.)
 Impact Crimper 7, 68
 Oil Filter Cutter 69
 Safety Wire Pliers..... 68
 Weather Pack.....44, 69
 Wrenches, AN..... 68
Torque Absorbers5, 49
 Biscuits.....5, 49
Tread Depth Gauge 57

U
Under-Car Light Kit 10

V
Valve Cover Breathers 72
Valve Stems 56
 Core Remover 56
Vent Clamps 71

W
Warning Lights4, 33
 Kits24, 43
Water Pressure Gauge 43
Weather Pack Connectors 44
 Crimper44, 45
 Kit 44
 Removal Tool44, 69
Weatherproof Switch.....21, 24
Window Nets..... 67
 Installation Kit 67
Wire, Electrical..... 7
Wiring Harnesses.....2, 13, 15-17
Wiring Kits 6
Wrenches, AN 68

Z
Zip Ties 65

PART NUMBER INDEX

40-100..... 4, 61	50-300.....44	50-7731.....19	56-042.....46	57-094..... 7	58-025.....66
40-121..... 4, 61	50-301.....44	51-004.....60	56-050.....47	57-101..... 7	58-026.....66
40-123..... 4, 61	50-302.....44	51-017.....60	56-060.....46	57-102..... 7	58-030.....67
40-125..... 4, 61	50-303.....44	51-027.....60	56-061.....46	57-103..... 7	58-031.....67
40-127..... 4, 61	50-310.....44	51-037.....60	56-062.....46	57-104..... 7	58-032.....67
40-150..... 4, 61	50-311.....44	51-038.....60	56-065.....47	57-1809..... 8	58-034.....67
40-181..... 4, 61	50-312.....44	51-039.....60	56-070.....47	57-1810..... 8	58-035.....67
40-183..... 4, 61	50-320.....44	51-040.....60	56-085..... 46, 73	57-200..... 7	58-036.....67
40-185..... 4, 61	50-321.....44	51-041.....59	56-104.....57	57-201..... 7	58-041.....67
40-187..... 4, 61	50-322.....44	51-043.....59	56-105.....57	57-2011..... 7	58-042.....67
40-241..... 4, 61	50-330.....44	51-044.....59	56-108.....52	57-203..... 7	58-043.....67
40-243..... 4, 61	50-331.....44	51-046.....59	56-110..... 57, 68	57-2031..... 7	58-044.....67
40-245..... 4, 61	50-332.....44	51-048.....59	56-111..... 57, 68	57-236..... 7	58-046.....67
40-247..... 4, 61	50-340.....44	51-051.....58	56-115.....56	57-2361..... 7	58-047.....67
40-300..... 4, 61	50-341.....44	51-0512.....58	56-116.....56	57-240..... 7	58-048.....67
40-350..... 4, 61	50-342.....44	51-052.....58	56-119.....56	57-2401..... 7	58-049.....67
40-361..... 4, 61	50-360.....44	51-0522.....58	56-120.....53	57-410..... 7	58-051.....66
40-363..... 4, 61	50-361.....44	51-053.....58	56-121.....53	57-440..... 7	58-052.....66
40-365..... 4, 61	50-362.....44	51-0532.....58	56-122.....53	57-441..... 7	58-053.....66
40-367..... 4, 61	50-380.....44	51-054.....58	56-123.....53	57-443..... 7	58-210.....65
40-421..... 4, 61	50-397.....45	51-0542.....58	56-124.....53	57-445..... 7	58-211.....65
40-423..... 4, 61	50-398.....44	51-064..... 58, 73	56-128.....53	57-450..... 7	58-212.....65
40-425..... 4, 61	50-399..... 44, 69	51-070.....58	56-130.....53	57-470..... 7	58-221.....65
40-427..... 4, 61	50-400.....21	51-071.....58	56-131.....53	57-490..... 7	58-222.....65
40-500..... 4, 61	50-401..... 21, 24	51-201.....59	56-133.....53	57-520..... 7	58-223.....65
40-700..... 4, 61	50-402..... 21, 24	51-210.....59	56-135.....53	57-525..... 7	58-224.....65
50-020..... 14	50-403.....24	51-215.....59	56-136.....53	57-530..... 7	58-225.....65
50-022..... 15	50-410.....21	51-230.....59	56-137.....53	57-540..... 7	58-230.....65
50-023..... 15	50-415.....21	51-235.....59	56-138.....53	57-550..... 7	58-231.....65
50-025..... 15	50-417.....21	51-236.....59	56-139.....53	57-601..... 2, 11	58-232.....65
50-031..... 16	50-420.....21	51-237.....59	56-142.....53	57-602..... 2, 11	58-233.....65
50-033..... 16	50-422.....21	55-001.....11	56-143.....53	57-604..... 2, 9	58-234.....65
50-034.....21	50-424.....21	55-002.....11	56-144.....53	57-607..... 9	58-235.....65
50-052..... 14	50-430.....11	55-003.....11	56-155.....57	57-610..... 9	58-236.....65
50-053..... 14	50-434.....20	55-004.....11	56-161.....54	57-620..... 9	58-237.....65
50-102..... 14	50-435.....20	55-009.....11	56-162.....54	57-660..... 9	58-238.....65
50-103..... 14	50-440.....12	55-010.....11	56-163.....54	57-700.....10	58-239.....65
50-163..... 18	50-442.....12	55-011.....11	56-167.....54	57-701..... 9	58-241.....50
50-164..... 18	50-500.....21	55-012.....11	56-168.....54	57-702..... 9	58-242.....50
50-165..... 18	50-501.....21	55-021.....11	56-169.....54	57-703..... 9	58-243.....50
50-166..... 18	50-502..... 21, 24	55-022.....11	56-170.....54	57-704.....10	58-244.....50
50-1711.....16	50-503.....21	55-120.....11	56-181.....52	57-705.....10	58-250.....65
50-1713.....16	50-504.....21	55-55.....11	56-184.....52	57-706.....10	60-000.....63
50-1714..... 2, 17	50-505.....21	56-001.....47	56-207.....53	57-708..... 9	60-003.....63
50-172.....18	50-506.....21	56-002.....47	56-208.....53	57-709..... 9	60-005.....63
50-190.....51	50-507.....20	56-0021.....47	56-209.....53	57-710.....10	60-008.....63
50-200..... 13, 15	50-510.....21	56-0022.....47	56-210.....53	57-711.....10	60-009.....63
50-201..... 13, 15	50-512.....21	56-003.....47	56-300..... 52, 73	57-718..... 2, 9	60-010.....63
50-2001.....11	50-513.....10	56-004.....47	56-333..... 53, 73	57-719..... 2, 9	60-013.....63
50-2002.....11	50-514.....10	56-0041.....47	56-9002.....47	57-723.....10	60-015.....63
50-2006..... 12, 45	50-520.....21	56-0042.....47	56-9141.....54	57-810.....10	60-018.....63
50-2007..... 12, 45	50-522.....21	56-006.....47	56-9143.....54	57-820.....10	60-020.....63
50-2008.... 2, 12, 45	50-524.....20	56-0061.....47	56-9144.....54	57-830.....10	60-030.....63
50-2021..... 13, 16	50-526.....20	56-0062.....47	56-9145.....54	57-944..... 7	60-032.....62
50-2030.....13	50-601.....21	56-007.....47	57-008..... 8	58-011.....66	60-034.....62
50-2031..... 13, 16	50-609.....21	56-008.....47	57-009..... 8	58-012.....66	60-035.....62
50-2032.....13	50-610.....21	56-009..... 47, 73	57-010..... 8	58-013.....66	60-037.....62
50-2034.... 2, 13, 17	50-711.....19	56-010.....46	57-011..... 8	58-016.....66	60-039.....62
50-2051..... 2, 13	50-7164.....19	56-020.....46	57-012..... 8	58-020.....66	60-040.....62
50-212.....12	50-720.....19	56-021.....46	57-014..... 8	58-021.....66	60-041.....62
50-230..... 6	50-731.....19	56-022.....46	57-014..... 8	58-022.....66	60-045.....66
50-231..... 6	50-7711.....19	56-040.....46	57-091..... 7	58-023.....66	60-050.....72
50-232..... 6	50-7713.....19	56-041.....46	57-092..... 7	58-024.....66	60-078.....65
			57-093..... 7		



61-0101.....34	61-700.....33	611-4521..... 23, 41	62-280..... 5, 48	66-106.....48	68-0129.....51
61-0151.....38	61-701.....33	611-4531..... 23, 41	62-457..... 5, 48	66-400..... 5, 49	68-015.....51
61-0171.....36	61-702.....33	611-4541.....41	62-465..... 5, 48	66-499.....49	68-0159.....51
61-0201.....34	61-704.....33	611-5411.....39	62-477..... 5, 48	66-500.....49	71-322..... 4, 45
61-0211.....34	61-706.....33	611-5421.....39	62-480..... 5, 48	66-501.....49	71-332..... 4, 45
61-0251.....38	61-709.....33	611-5431.....39	62-487..... 5, 48	66-502.....49	71-342..... 4, 45
61-0261.....38	61-7001.....26	611-5441.....39	62-490..... 5, 48	66-504.....49	71-362..... 4, 45
61-0271.....36	61-7004.....22	611-6000.....31	62-500..... 5, 48	66-506.....49	75-070..... 5, 48
61-0281.....36	61-7005.....22	611-6001.....25	62-510..... 5, 48	66-508..... 5, 49	75-075..... 5, 48
61-0301.....34	61-7011.....26	611-6002.....25	62-600..... 5, 48	66-512.....49	75-080..... 5, 48
61-0311.....38	61-7012.....26	611-6003.....31	64-010.....68	66-550.....49	75-085..... 5, 48
61-0321.....36	61-7021.....26	611-6004.....22	64-015.....68	66-551.....49	75-090..... 5, 48
61-0371.....35	61-7031.....27	611-6005.....22	64-020..... 7, 68	66-552.....49	75-095..... 5, 48
61-0381.....39	61-7041.....27	611-6006.....31	64-076.....69	66-554.....49	75-100..... 5, 48
61-0391.....37	61-7042.....27	611-6008.....43	64-077.....69	66-556.....49	75-105..... 5, 48
61-0401.....35	61-7051.....27	611-6009.....31	64-078.....69	66-6275..... 5, 48	75-110..... 5, 48
61-0411.....35	61-706..... 4	611-7000.....31	64-086.....69	66-700.....55	75-115..... 5, 48
61-0451.....39	61-710.....32	611-7003.....31	64-087.....69	66-752.....71	75-120..... 5, 48
61-0461.....39	61-7101.....32	611-7006.....31	64-088.....69	66-754.....71	75-125..... 5, 48
61-0471.....37	61-71012.....32	611-7007.....31	64-140.....70	66-756.....71	75-130..... 5, 48
61-0481.....37	61-71024.....32	611-7009.....31	64-145.....70	66-757.....71	75-135..... 5, 48
61-0501.....35	61-71036.....32	611-7010.....25	64-146.....64	66-850.....71	75-140..... 5, 48
61-0551.....39	61-71048.....32	611-7012.....31	64-148.....64	66-852.....71	75-145..... 5, 48
61-0571.....37	61-71060.....32	611-90.....55	64-149.....64	66-854.....71	75-150..... 5, 48
61-0601.....40	61-711.....43	611-900.....32	64-150.....70	66-856.....71	75-155..... 5, 48
61-0604..... 3, 23	61-712.....43	611-901.....32	64-157.....64	66-858.....71	75-160..... 5, 48
61-0605..... 3, 23	61-713.....43	611-902.....32	64-158.....64	66-860.....71	75-165..... 5, 48
61-0606..... 3, 23	61-714.....43	611-903..... 24, 32	64-162.....64	66-908.....71	75-170..... 5, 48
61-0611.....40	61-716.....43	62-070..... 5, 48	64-169.....64	66-914.....71	75-175..... 5, 48
61-0621.....40	61-717.....24	62-075..... 5, 48	64-175.....69	66-920.....70	75-180..... 5, 48
61-0631.....40	61-718.....24	62-080..... 5, 48	64-176.....69	66-922.....70	75-185..... 5, 48
61-0641.....41	61-719.....43	62-085..... 5, 48	64-180.....69	66-923.....70	75-190..... 5, 48
61-0651.....41	61-720.....32	62-090..... 5, 48	64-208.....72	66-925.....71	75-195..... 5, 48
61-0652.....41	61-721.....32	62-095..... 5, 48	64-210.....72	66-927.....71	75-200..... 5, 48
61-0661.....41	61-722.....24	62-100..... 5, 48	64-211.....72	66-929.....71	75-205..... 5, 48
61-0704..... 3, 23	61-724.....32	62-105..... 5, 48	64-212.....72	66-931.....70	75-210..... 5, 48
61-0705..... 3, 23	61-725.....32	62-110..... 5, 48	64-225.....70	66-933.....70	75-215..... 5, 48
61-101.....55	61-727.....24	62-115..... 5, 48	64-230.....70	66-934.....70	75-220..... 5, 48
61-103.....55	61-730.....33	62-120..... 5, 48	64-253.....72	66-936.....70	75-225..... 5, 48
61-2061.....42	61-733.....33	62-125..... 5, 48	64-255.....72	66-937.....71	75-230..... 5, 48
61-2081.....42	61-735.....33	62-130..... 5, 48	64-257.....72	66-938.....71	75-235..... 5, 48
61-2101.....42	61-740.....33	62-135..... 5, 48	64-260.....72	66-9381.....71	75-240..... 5, 48
61-2121.....42	61-748.....33	62-140..... 5, 48	64-261.....72	66-939.....20	75-250..... 5, 48
61-300..... 4, 32	61-750.....33	62-145..... 5, 48	64-262..... 68, 72	66-940.....20	75-260..... 5, 48
61-6001.....28	61-790.....33	62-150..... 5, 48	64-400.....56	66-941.....72	75-270..... 5, 48
61-6004.....22	61-795.....10	62-155..... 5, 48	64-401.....56	66-942.....72	75-280..... 5, 48
61-6005.....22	61-9795.....10	62-160..... 5, 48	64-403.....56	66-945.....20	75-290..... 5, 48
61-6005-1..... 3, 22	611-096.....25	62-165..... 5, 48	64-510.....55	66-950.....72	75-300..... 5, 48
61-6006..... 3, 22	611-099.....25	62-170..... 5, 48	64-511.....55	68-001.....50	75-310..... 5, 48
61-6011.....28	611-100.....25	62-175..... 5, 48	64-703.....56	68-0011.....50	75-320..... 5, 48
61-6012.....28	611-30.....42	62-180..... 5, 48	64-704.....56	68-0012.....50	75-330..... 5, 48
61-6021.....28	611-31.....42	62-185..... 5, 48	64-706.....56	68-002.....50	75-340..... 5, 48
61-6031.....29	611-32.....42	62-190..... 5, 48	64-708.....68	68-0021.....50	75-350..... 5, 48
61-60313.....30	611-325.....42	62-195..... 5, 48	64-709.....68	68-0022.....50	75-360..... 5, 48
61-6041.....29	611-3411.....35	62-200..... 5, 48	64-720.....56	68-003.....50	75-370..... 5, 48
61-60413.....30	611-3421.....35	62-205..... 5, 48	64-730.....69	68-0031.....50	75-380..... 5, 48
61-6042.....29	611-3431.....35	62-210..... 5, 48	64-800.....71	68-0032.....50	75-390..... 5, 48
61-60423.....30	611-3441.....35	62-215..... 5, 48	65-096.....64	68-004.....50	75-400..... 5, 48
61-6051.....29	611-4411.....37	62-220..... 5, 48	65-106.....64	68-0041.....50	75-410..... 5, 48
61-60513.....30	611-4421.....37	62-225..... 5, 48	65-192.....72	68-0042.....50	75-420..... 5, 48
61-697.....43	611-4431.....37	62-230..... 5, 48	65-196.....72	68-010.....51	75-430..... 5, 48
61-698.....33	611-4441.....37	62-235..... 5, 48	66-100..... 5, 48	68-0109.....51	75-440..... 5, 48
61-699.....33	611-4511.....41	62-240..... 5, 48	66-105.....48	68-012.....51	75-600..... 5, 48

Returns

To make sure that the item(s) get quickly processed, please follow these simple steps.

1. Call and request an RMA (Returned Merchandise Authorization) number for the merchandise you wish to return. All products must be returned in an unaltered / unchanged state from its original condition. Products must be no older than one year old, or two years old for scales. New parts returned for credit must be completely unaltered, and in new condition. Warranty parts will be inspected to see if failure was caused by misuse of the part, and possibly deemed not returnable.
2. Include your contact information, and the problem with the part in a note inside the box. Please write RMA number on the outside of the box.
3. Custom parts are not returnable for credit, but can sometimes be repaired.

Printing Disclaimer...

QuickCar Racing Products reserves the right to update, change or modify any product or policy deemed necessary without notice. Every effort has been made to avoid printing errors, in this catalog and previous versions. We disclaim any responsibility for application or specifications.

Disclaimer of Warranty

QuickCar Racing Products makes no warranties...

QuickCar Racing Products makes no written, oral, expressed, or implied statement of warranty or guarantee on any product sold, other than for defects in materials or workmanship as stated previously. QuickCar Racing Products will not assume liability for personal or property damage resulting from the use or misuse of any product we manufacture or sell, whether on the street or on the race track. Purchase and/or use of these products implies recognition and acceptance of this entire warranty and disclaimer by customer.

Warranty

Parts are backed by a full one year warranty against factory defects in workmanship and materials. All warranty parts will be inspected upon arrival for misuse. Scales are backed by a two year warranty against factory defects in workmanship and materials. QuickCar Racing Products reserves the right to decline any warranty items if it appears that the item has failed due to misuse, or lack of care taken while the product was in use.



THE SECRET IS OUT!

Someone let the secret out: U.S.A. made QuickCar torque absorbers **really do work better** than the knockoffs from who-knows-where.

That's because QuickCar torque absorbers feature a bronze bushing and a grease zerk (to reduce bind) that

other units simply do not have.

These torque absorbers allow many different biscuit combinations to achieve the perfect progressive rate for every situation/driver.



66-499
Torque Absorber

QuickCar biscuits have standardized hardness and are also made in the U.S.A.



66-501
Extra Soft Blue



66-502
Soft Yellow



66-504
Medium Red



66-506
Hard Black

Someone let the secret out, **but they're keeping the QuickCar torque absorbers!**

66-500
Torque Absorber

QUALITY AND PERFORMANCE

MADE IN THE
U.S.A.

QUICKCAR
RACING PRODUCTS

800-997-7333 • www.quickcar.net





QRP 100



170 Business Park Drive, Lebanon, TN 37090

1-800-99-SPEED

www.quickcar.net

