



***2022 BUYERS GUIDE***



From traditional analog components to the most cutting-edge digital gauges, QuickCar has been a leader in the performance industry since 1992. QuickCar has built its reputation on high-quality innovative products designed to simplify installation, maximize reliability, and provide a winning advantage on the street and on the track.



## Contents

Section	Page No.	Section	Page No.
New Products .....	1-3	Wiring Kits .....	64-67
Redline Gauge Panels .....	4-9	Tire Gauges .....	68-69
Digital Gauge Panels .....	10-13	Chassis Components .....	70-71
Extreme Gauge Panels .....	14-19	Steering Wheels .....	72
Standard Gauge Panels .....	20-25	Steering Wheel Accessories .....	73
Tachometers .....	26-27	Tire Management .....	74-75
Digital Gauges .....	28	Chassis Set-Up .....	76
Gauge Panel Accessories .....	29-32	Carburetor Accessories .....	77
Wraparound Gauge Panels .....	33	Timing Systems .....	78
Sprint Car Gauge Panels .....	34-37	Spark Plug Wires .....	79
Ignition Control Panels .....	38-48	Brake System Accessories .....	80
Wiring Harnesses .....	49	Cooling System Accessories .....	81
Ignition Control Panel Accessories .....	50-51	Tools .....	82-83
Wiring Harnesses .....	52-53	Safety Equipment .....	84
Ignition System Accessories .....	54-55	QuickCar Extras .....	85
Battery Cable Kits .....	56	Product Index .....	86
Wiring Accessories .....	57-58	Part No. Page Index .....	87-88
Electrical System Accessories .....	59-63		



## NEW PRODUCTS



### 3-Gauge Extreme Panel

61-7016

See Page 14



### 5-Gauge Extreme Panel

61-7056

See Page 15



### QuickTach 2

611-102

See Page 27



### Braided Stainless Steel Gauge Line Kits

63-71012

63-71024

63-71036

63-71048

63-71060

See Page 31



### Electronic Pressure Sender Adapter

63-722

See Page 31



### Extreme Sprint Car Panel w/ Battery

61-7705

See Page 35

## Sprint Car Wiring Harness

50-7220

See Page 37



## Aluminum and Rubber Clamps

66-830

66-832

66-834

66-836

66-838

66-840

See Page 50



## Nylon Line Clamps

66-809

66-810

66-812

66-814

66-818

66-820

See Page 50



## MSD 6AL-2 Box Adapter

50-2005

See Page 54



## Radiator Fan Harness

50-2010

See Page 55





## NEW PRODUCTS



### 8-Gauge Ring Terminal w/ 1/2" Hole

57-515

See Page 56



### Tin Plated 8-Gauge Ring Terminals

57-570

57-571

57-572

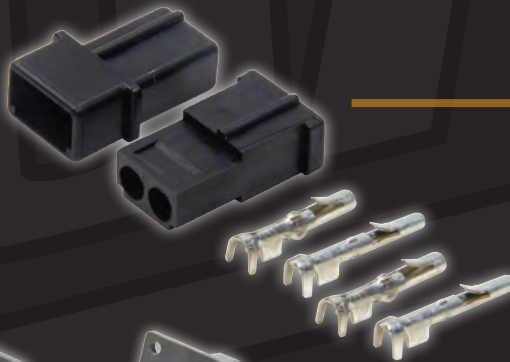
See Page 56



### Labeled Heat Shrink Kit

50-705

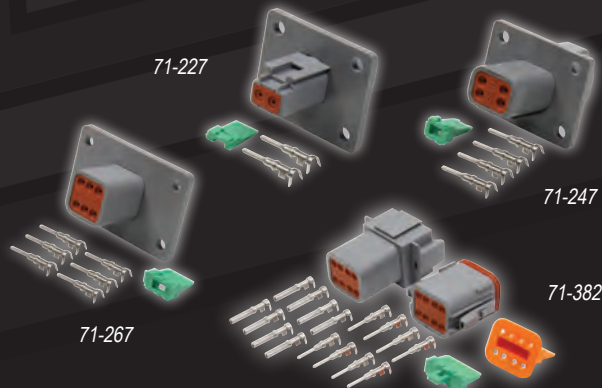
See Page 57



### MSD Distributor Connector Kit

50-2017

See Page 58



### Deutsch Connectors

71-227

71-247

71-267

71-382

See Page 59



### Remote Battery Charge Kit

57-714

See Page 63



## REDLINE GAUGE PANELS

Redline Gauge Panels are lightweight, accurate, and fitted with reliable electric stepper motor gauges. Precision 2-5/8" diameter gauges feature a programmable warning function to quickly alert the driver in the event of a problem. Panels are sold completely pre-wired for easy installation and include all necessary senders.

### 69-2001

- Oil Pressure
- Water Temperature
- 7-1/4" W x 4-1/2" H



### 69-3011

- Oil Pressure
- Water Temperature
- Oil Temperature
- 10-1/2" W x 4-1/2" H



### 69-3012

- Oil Pressure
- Water Temperature
- Fuel Pressure
- 10-1/2" W x 4-1/2" H



### 69-3016

- Oil Pressure
- Water Temperature
- Water Pressure
- 10-1/2" W x 4-1/2" H



### 69-3017

- Oil Pressure
- Water Temperature
- Voltmeter
- 10-1/2" W x 4-1/2" H



## Firewall Sensor Junctions

Sensor junction blocks connect lines to pressure transducers, a requirement of stepper motor gauges. Typically mounted to the firewall junction blocks include 1/8" NPT threads to accept pressure transducers on the interior side of firewall, while pressure lines are then connect adjacently on the engine side. Manufactured from black anodized billet aluminum, blocks are offered with or without accessory wiring holes.

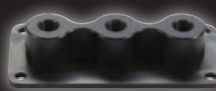
Part No.	Description
63-120	Two-Terminal Junction
63-121	Two-Terminal Junction with Single Accessory Hole
63-130	Three-Terminal Junction
63-132	Three-Terminal Junction with Two Accessory Holes



63-120



63-121



63-130



63-132



## REDLINE GAUGE PANELS



**69-4021**

- Oil Pressure
- Oil Temperature
- Water Temperature
- Fuel Pressure
- 13-5/8" W x 4-1/2" H



**69-4026**

- Oil Pressure
- Fuel Pressure
- Water Temperature
- Water Pressure
- 13-5/8" W x 4-1/2" H



**69-4027**

- Oil Pressure
- Oil Temperature
- Water Temperature
- Voltmeter
- 13-5/8" W x 4-1/2" H



**69-5036**

- Oil Pressure
- Fuel Pressure
- Water Temperature
- Water Pressure
- Oil Temperature
- 17" W x 4-1/2" H



**69-5037**

- Oil Pressure
- Fuel Pressure
- Water Temperature
- Voltmeter
- Oil Temperature
- 17" W x 4-1/2" H

## 2-5/8" Redline Gauges

May also be purchased separately. Senders and pressure lines not included.



**69-000**

Fuel Pressure  
0-15 PSI



**69-003**

Oil Pressure  
0-100 PSI



**69-006**

Water Temperature  
100°-280°F



**69-007**

Volt Meter  
8-18 Volts



**69-008**

Water Pressure  
0-60 PSI



**69-009**

Oil Temperature  
140°-320°F

## Replacement Senders



Part No.	Description
63-225	2-Wire Temp. Sender
63-230	Oil Pressure/Water Pressure Sender
63-240	Fuel Pressure Sender



## REDLINE GAUGE / TACH PANELS with Multi-Recall Tachometer

Panels combine advanced, electric stepper motor 2-5/8" diameter gauges with the benefits of a Redline 3" diameter multi-recall tachometer. Multi-recall, 10,000 RPM tachometer allows recalling the four highest (straightaway) and four lower (corner) RPM readings to help determine proper gearing. Panels are sold completely pre-wired for easy installation and include all necessary senders.

### 69-2031

- Oil Pressure
- Water Temperature
- Redline Multi-Recall Tachometer
- 10-3/4" W x 4-1/2" H



### 69-3041

- Oil Pressure
- Water Temperature
- Oil Temperature
- Redline Multi-Recall Tachometer
- 13-7/8" W x 4-1/2" H



### 69-3042

- Oil Pressure
- Water Temperature
- Fuel Pressure
- Redline Multi-Recall Tachometer
- 13-7/8" W x 4-1/2" H



### 69-3046

- Oil Pressure
- Water Temperature
- Water Pressure
- Redline Multi-Recall Tachometer
- 13-7/8" W x 4-1/2" H





## REDLINE GAUGE / TACH PANELS with Multi-Recall Tachometer



### 69-3047

- Oil Pressure
- Water Temperature
- Voltmeter
- Redline Multi-Recall Tachometer
- 13-7/8" W x 4-1/2" H



### 69-4051

- Oil Pressure
- Water Temperature
- Oil Temperature
- Fuel Pressure
- Redline Multi-Recall Tachometer
- 17" W x 4-1/2" H



### 69-4056

- Oil Pressure
- Water Temperature
- Fuel Pressure
- Water Pressure
- Redline Multi-Recall Tachometer
- 17" W x 4-1/2" H



### 69-4057

- Oil Pressure
- Water Temperature
- Oil Temperature
- Voltmeter
- Redline Multi-Recall Tachometer
- 17" W x 4-1/2" H



## REDLINE GAUGE / TACH PANELS

### With Recall Tachometer

Panels combine advanced, electric stepper motor 2-5/8" diameter gauges with the benefits of a Redline 2-5/8" single recall tachometer. Single recall, 10,000 RPM tachometer allows recalling the highest RPM of any given session to help determine proper gearing. Panels are sold completely pre-wired for easy installation and include all necessary senders.

#### 69-2231

- Oil Pressure
- Water Temperature
- Tachometer
- 10-1/2" W x 4-1/2" H



#### 69-3241

- Oil Pressure
- Water Temperature
- Oil Temperature
- Tachometer
- 13-5/8" W x 4-1/2" H



#### 69-3242

- Oil Pressure
- Water Temperature
- Fuel Pressure
- Tachometer
- 13-5/8" W x 4-1/2" H



#### 69-3246

- Oil Pressure
- Water Temperature
- Water Pressure
- Tachometer
- 13-5/8" W x 4-1/2" H





## REDLINE GAUGE / TACH PANELS With Recall Tachometer



### 69-3247

- Oil Pressure
- Water Temperature
- Voltmeter
- Tachometer
- 13-5/8" W x 4-1/2" H



### 69-4251

- Oil Pressure
- Water Temperature
- Oil Temperature
- Fuel Pressure
- Tachometer
- 17" W x 4-1/2" H



### 69-4256

- Oil Pressure
- Water Temperature
- Fuel Pressure
- Water Pressure
- Tachometer
- 17" W x 4-1/2" H



### 69-4257

- Oil Pressure
- Water Temperature
- Oil Temperature
- Voltmeter
- Tachometer
- 17" W x 4-1/2" H



## DIGITAL GAUGE PANELS

Ultra-lightweight gauge panels are fit with precise 2-1/16" diameter digital electronic gauges. Gauges include a digital blue LED readout and graduated scale for increased readability. Built-in warning light functions are adjustable with the touch of a finger, causing the lighting to flash in the event of a problem, instantly alerting the driver. Panels are sold completely pre-wired for easy installation, and include all necessary transducers and senders.

### 67-2001

- Oil Pressure
- Water Temperature
- 6-1/16" W x 3-5/8" H



### 67-3011

- Oil Pressure
- Water Temperature
- Oil Temperature
- 8-1/2" W x 3-5/8" H



### 67-3012

- Oil Pressure
- Water Temperature
- Fuel Pressure
- 8-1/2" W x 3-5/8" H



### 67-3016

- Oil Pressure
- Water Temperature
- Water Pressure
- 8-1/2" W x 3-5/8" H



### 67-3017

- Oil Pressure
- Water Temperature
- Voltmeter
- 8-1/2" W x 3-5/8" H



### 67-4021

- Oil Pressure
- Water Temperature
- Oil Temperature
- Fuel Pressure
- 11" W x 3-5/8" H





## DIGITAL GAUGE PANELS



### 67-4026

- Oil Pressure
- Water Temperature
- Fuel Pressure
- Water Pressure
- 11" W x 3-5/8" H



### 67-4027

- Oil Pressure
- Water Temperature
- Oil Temperature
- Voltmeter
- 11" W x 3-5/8" H



### 67-5036

- Oil Pressure
- Water Temperature
- Oil Temperature
- Fuel Pressure
- Water Pressure
- 13-1/2" W x 3-5/8" H



### 67-5037

- Oil Pressure
- Water Temperature
- Oil Temperature
- Fuel Pressure
- Voltmeter
- 13-1/2" W x 3-5/8" H

## 2-1/16" Digital Gauges

May also be purchased separately. Senders, transducers, and pressure lines not included.



### 67-000

Fuel Pressure  
0-15 PSI



### 67-001

Tachometer  
10,000 RPM



### 67-003

Oil Pressure  
0-100 PSI



### 67-005

Fuel Pressure  
0-100 PSI



### 67-006

Water Temperature  
100°F - 280°F



### 67-007

Voltmeter  
8-18 Volts



### 67-008

Water Pressure  
0-100 PSI



### 67-009

Oil Temperature  
100°F - 320°F

## Replacement Senders

Part No.	Description
63-225	2-Wire Temp Sender
63-230	Oil Pressure/Water Pressure/Fuel Pressure (100 psi) Sender
63-240	Fuel Pressure (15 psi) Sender





## DIGITAL GAUGE/TACH PANELS

Ultra-lightweight gauge panels are fitted with precision, 2-1/16" diameter digital electronic gauges. Gauges include a digital blue LED readout and graduated scale for increased readability. Built-in warning light functions are adjustable with the touch of a finger, causing the lighting to flash in the event of a problem, instantly alerting the driver. Panels are sold completely pre-wired for easy installation, and include all necessary transducers and senders.

### 67-2031

- Oil Pressure
- Water Temperature
- Tachometer
- 8-1/2" W x 3-5/8" H



### 67-3041

- Oil Pressure
- Water Temperature
- Oil Temperature
- Tachometer
- 11" W x 3-5/8" H



### 67-3042

- Oil Pressure
- Water Temperature
- Fuel Pressure
- Tachometer
- 11" W x 3-5/8" H



### 67-3046

- Oil Pressure
- Water Temperature
- Water Pressure
- Tachometer
- 11" W x 3-5/8" H





## DIGITAL GAUGE/TACH PANELS



**67-3047**

- Oil Pressure
- Water Temperature
- Voltmeter
- Tachometer
- 11" W x 3-5/8" H



**67-4051**

- Oil Pressure
- Water Temperature
- Oil Temperature
- Fuel Pressure
- Tachometer
- 13-1/2" W x 3-5/8" H



**67-4056**

- Oil Pressure
- Water Temperature
- Fuel Pressure
- Water Pressure
- Tachometer
- 13-1/2" W x 3-5/8" H



**67-4057**

- Oil Pressure
- Water Temperature
- Oil Temperature
- Voltmeter
- Tachometer
- 13-1/2" W x 3-5/8" H



## EXTREME GAUGE PANELS

Extreme Gauge Panels feature lightweight, 2-5/8" diameter white-face mechanical gauges with bright red pointers, mounted in gloss black-finished panels. Panels are pre-wired, ready to install, and include necessary senders. No external warning lights are needed; gauges use LED lights and switch automatically from white to designated color when a problem arises.

### 61-7001

- Oil Pressure
- Water Temperature
- 7-1/4" W x 3-5/8" H



### 61-7011

- Oil Pressure
- Water Temperature
- Oil Temperature
- 10-1/2" W x 4-1/2" H



### 61-7012

- Oil Pressure
- Water Temperature
- Fuel Pressure
- 10-1/2" W x 4-1/2" H



### 61-7016 NEW!

- Oil Pressure
- Water Temperature
- Water Pressure
- 10-1/2" W x 4-1/2" H





## EXTREME GAUGE PANELS



### 61-7017

- Oil Pressure
- Water Temperature
- Voltmeter
- 10-1/2" W x 4-1/2" H



### 61-7021

- Oil Pressure
- Water Temperature
- Oil Temperature
- Fuel Pressure
- 13-5/8" W x 4-1/2" H



### 61-7026

- Oil Pressure
- Water Temperature
- Fuel Pressure
- Water Pressure
- 13-5/8" W x 4-1/2" H



### 61-7056 NEW!

- Oil Pressure
- Fuel Pressure
- Water Temperature
- Water Pressure
- Oil Temperature
- 13-5/8" W x 4-1/2" H



## EXTREME GAUGE PANELS

### Extreme Gauge Panels with Digital Tachometer

Panels are designed for use as an RPM indicator or shift light. RPM settings are adjusted by simply touching the lens with a finger. Fully assembled and pre-wired, panels include all necessary senders. May be assembled with any combination of gauges; please call with specific requirements.

#### 61-7031

- Oil Pressure
- Water Temperature
- Extreme LED Digital Tachometer
- 10-1/2" W x 4-1/2" H



#### 61-7041

- Oil Pressure
- Oil Temperature
- Water Temperature
- Extreme LED Digital Tachometer
- 13-5/8" W x 4-1/2" H



#### 61-7042

- Oil Pressure
- Fuel Pressure
- Water Temperature
- Extreme LED Digital Tachometer
- 13-5/8" W x 4-1/2" H





# EXTREME GAUGE PANELS



## Extreme Gauge Panels with Digital Tachometer

**61-7051**

- Oil Pressure
- Water Temperature
- Oil Temperature
- Fuel Pressure
- Extreme LED Digital Tachometer
- 17" W x 4-1/2" H



## 2-5/8" Extreme Gauges

May also be purchased separately. Senders and pressure lines not included.



**611-7000**

Fuel Pressure  
0-15 PSI

**611-7003**

Oil Pressure  
0-100 PSI

**611-7006**

Water Temperature  
100°F-280°F

**611-7007**

Voltmeter  
8-18 Volts

**611-7008**

Water Pressure  
0-100 PSI

**611-7009**

Oil Temperature  
100°F-320°F

**611-7010**

Digital Tach  
0-18,000 RPM

## Replacement Warning Light Switches



61-730



61-735



61-740



61-750

Part No.	Description
61-730	Fuel Pressure Switch 4 PSI
61-735	Oil Pressure Switch 20 PSI
61-740	Water Temperature Switch 1/2" NPT
61-750	Oil Temperature Switch 280°F

## Pressure Gauge Line Kits

Each kit includes two 1/8" NPT to -4AN adapter fittings and -4AN stainless steel braided line to hook-up pressure gauges.



61-71012



61-724



61-725

Part No.	Description
61-71012	Kit with 12" Line
61-71024	Kit with 24" Line
61-71036	Kit with 36" Line
61-71048	Kit with 48" Line
61-71060	Kit with 60" Line
61-724	1/8" NPT Female to -4AN Male Gauge Adapter (Each)
61-725	1/8" NPT Male to -4AN Male Gauge Adapter (Each)



## EXTREME GAUGE PANELS

### Extreme Gauge Panels with 5" Tachometer

Panels feature the addition of the 5" 10,000 RPM recall Tachometer, Fully assembled and pre-wired, panels include all necessary senders. May be assembled with any combination of gauges; please call with specific requirements

#### 61-7731

- 5" QuickCar 10,000 RPM Recall Tachometer
- Oil Pressure
- Water Temperature
- 11-7/8" W x 4-1/2" H



#### 61-7741

- 5" QuickCar 10,000 RPM Recall Tachometer
- Oil Pressure
- Water Temperature
- Oil Temperature
- 15-1/8" W x 4-1/2" H



#### 61-7742

- 5" QuickCar 10,000 RPM Recall Tachometer
- Oil Pressure
- Water Temperature
- Fuel Pressure
- 15-1/8" W x 4-1/2" H



#### 61-7751

- 5" QuickCar 10,000 RPM Recall Tachometer
- Oil Pressure
- Water Temperature
- Oil Temperature
- Fuel Pressure
- 18-5/16" W x 4-1/2" H





# EXTREME GAUGE PANELS



## Extreme Gauge Panels with 3-3/8" Tachometer

Panels feature the addition of the 3-3/8" 10,000 RPM recall Tachometer. Fully assembled and pre-wired, panels include all necessary senders and remote recall switch. May be assembled with any combination of gauges; please call with specific requirements



**61-77313**

- 3-3/8" QuickCar 10,000 RPM Recall Tachometer
- Oil Pressure
- Water Temperature
- 11-7/8" W x 4-1/2" H



**61-77413**

- 3-3/8" QuickCar 10,000 RPM Recall Tachometer
- Oil Pressure
- Water Temperature
- Oil Temperature
- 15-1/8" W x 4-1/2" H



**61-77423**

- 3-3/8" QuickCar 10,000 RPM Recall Tachometer
- Oil Pressure
- Water Temperature
- Fuel Pressure
- 15-1/8" W x 4-1/2" H

**61-77513**

- 3-3/8" QuickCar 10,000 RPM Recall Tachometer
- Oil Pressure
- Water Temperature
- Oil Temperature
- Fuel Pressure
- 18-5/16" W x 4-1/2" H





## STANDARD GAUGE PANELS

### Standard Gauge Panels (Checkered Flag)

Standard gauge panels feature quality QuickCar 2-5/8" diameter mechanical gauges and accompanying warning lights. Panels are sold completely pre-wired for easy installation and include all necessary senders. All gauges in standard panels feature LED lighting.

#### 61-6001

- Oil Pressure
- Water Temperature
- Warning Lights
- 7-1/4" W x 4-1/2" H



#### 61-6011

- Oil Pressure
- Water Temperature
- Oil Temperature
- Warning Lights
- 10-1/2" W x 4-1/2" H



#### 61-6012

- Oil Pressure
- Water Temperature
- Fuel Pressure
- Warning Lights
- 10-1/2" W x 4-1/2" H



#### 61-6021

- Oil Pressure
- Water Temperature
- Oil Temperature
- Fuel Pressure
- Warning Lights
- 13-5/8" W x 4-1/2" H



### Warning Light Switches



Part No.	Description
61-730	Fuel Pressure Switch 4 PSI
61-735	Oil Pressure Switch 20 PSI
61-740	Water Temperature Switch 1/2" NPT
61-750	Oil Temperature Switch 280°F



# STANDARD GAUGE PANELS



## Standard Gauge Panels Cont. (Black)



### 61-6701

- Oil Pressure
- Water Temperature
- Warning Lights
- 7-1/4" W x 4-1/2" H



### 61-6711

- Oil Pressure
- Water Temperature
- Oil Temperature
- Warning Lights
- 10-1/2" W x 4-1/2" H



### 61-6712

- Oil Pressure
- Water Temperature
- Fuel Pressure
- Warning Lights
- 10-1/2" W x 4-1/2" H



### 61-6717

- Oil Pressure
- Water Temperature
- Voltmeter
- Warning Lights
- 10-1/2" W x 4-1/2" H



### 61-6721

- Oil Pressure
- Water Temperature
- Oil Temperature
- Fuel Pressure
- Warning Lights
- 13-5/8" W x 4-1/2" H



**611-6000**  
Fuel Pressure  
0-15 PSI



**611-6003**  
Oil Pressure  
0-100 PSI



**611-6006**  
Water Temperature  
100°F - 280°F



**611-6007**  
Voltmeter  
8-18 Volts



**611-6009**  
Oil Temperature  
100°F - 340°F

## Standard 2-5/8" Gauges

May also be purchased separately. Sold complete with LED lighting. Senders and pressure lines not included.



## STANDARD GAUGE PANELS

### Standard Gauge Panels with 5" Tachometer (Checkered Flag)

#### 61-6031

- QuickCar 10,000 RPM Tachometer
- Oil Pressure
- Water Temperature
- Warning Lights
- 11-7/8" W x 4-1/2" H



#### 61-6041

- QuickCar 10,000 RPM Tachometer
- Oil Pressure
- Water Temperature
- Oil Temperature
- Warning Lights
- 15-1/8" W x 4-1/2" H



#### 61-6042

- QuickCar 10,000 RPM Tachometer
- Oil Pressure
- Water Temperature
- Fuel Pressure
- Warning Lights
- 15-1/8" W x 4-1/2" H



#### 61-6051

- QuickCar 10,000 RPM Recall Tachometer
- Oil Pressure
- Water Temperature
- Oil Temperature
- Fuel Pressure
- Warning Lights
- 18-3/8" W x 4-1/2" H





## STANDARD GAUGE PANELS



### Standard Gauge Panels with 5" Tachometer Cont. (Black)



**61-6731**

- QuickCar 10,000 RPM Tachometer
- Oil Pressure
- Water Temperature
- Warning Lights
- 11-7/8" W x 4-1/2" H



**61-6741**

- QuickCar 10,000 RPM Tachometer
- Oil Pressure
- Water Temperature
- Oil Temperature
- Warning Lights
- 15-1/8" W x 4-1/2" H



**61-6742**

- QuickCar 10,000 RPM Tachometer
- Oil Pressure
- Water Temperature
- Fuel Pressure
- Warning Lights
- 15-1/8" W x 4-1/2" H

**61-6751**

- QuickCar 10,000 RPM Recall Tachometer
- Oil Pressure
- Water Temperature
- Oil Temperature
- Fuel Pressure
- Warning Lights
- 18-5/16" W x 4-1/2" H







## STANDARD GAUGE PANELS

### Standard Gauge Panels with 3-3/8" Tachometers (Checkered Flag)

#### 61-60313

- QuickCar 10,000 RPM Tachometer
- Oil Pressure
- Water Temperature
- Warning Lights
- 11-7/8" W x 4-1/2" H



#### 61-60413

- QuickCar 10,000 RPM Tachometer
- Oil Pressure
- Water Temperature
- Oil Temperature
- Warning Lights
- 15-1/8" W x 4-1/2" H



#### 61-60423

- QuickCar 10,000 RPM Tachometer
- Oil Pressure
- Water Temperature
- Fuel Pressure
- Warning Lights
- 15-1/8" W x 4-1/2" H



#### 61-60513

- QuickCar 10,000 RPM Recall Tachometer
- Oil Pressure
- Water Temperature
- Oil Temperature
- Fuel Pressure
- Warning Lights
- 18-3/8" W x 4-1/2" H





## STANDARD GAUGE PANELS



### Standard Gauge Panels with 3-3/8" Tachometers Cont. (Black)



**61-67313**

- QuickCar 10,000 RPM Tachometer
- Oil Pressure
- Water Temperature
- Warning Lights
- 11-7/8" W x 4-1/2" H



**61-67413**

- QuickCar 10,000 RPM Tachometer
- Oil Pressure
- Water Temperature
- Oil Temperature
- Warning Lights
- 15-1/8" W x 4-1/2" H



**61-67423**

- QuickCar 10,000 RPM Tachometer
- Oil Pressure
- Water Temperature
- Fuel Pressure
- Warning Lights
- 15-1/8" W x 4-1/2" H

**61-67513**

- QuickCar 10,000 RPM Tachometer
- Oil Pressure
- Water Temperature
- Oil Temperature
- Fuel Pressure
- Warning Lights
- 18-3/8" W x 4-1/2" H





## TACHOMETERS

QuickCar tachometers are used in the assembly of our quality-built, ready-to-install panels, and are also offered separately.

### Extreme LED Digital Tachometer 611-7010

Digital tachometer's compact, 2-5/8" diameter allows it to be installed into any Extreme gauge panel. Tachometer may be used simply as an RPM indicator, or as a shift light. RPM settings are adjusted by simply touching the lens with a finger. Unit also includes a recall feature, which retrieves the highest RPM attained during the race.



Shift Lights On

### Tachometer with Memory 611-6001

A true American-made, 5" diameter tachometer that is affordable, dependable, and accurate. Tachometer has a silver dial face with bright red pointer, has a 0-10,000 RPM range, and popular memory that recalls the highest RPM attained during the last race. Unit is fully analog, with no microprocessor, making it legal in all sanctioning bodies. Now features bright white LED lighting.



### Tachometer with Remote Recall 611-6002

Made in the USA, 3-3/8" diameter aluminum-cased tachometer includes a 0-10,000 RPM range. Designed for in-dash mounting, tachometer includes a silver dial face with bright red pointer, and includes a remote recall, which displays the highest RPM attained during the last race. Analog rather than microprocessor design allows legality in all sanctioning bodies. Now features bright white LED lighting.

Part No.	Description
611-096	Replacement Remote Recall Switch



### Small Diameter Digital Tachometer 67-001

This lightweight 2-1/16" diameter tachometer features a bright blue, easy-to-read digital display. Designed with a 0-10,000 RPM range and high-RPM recall, tachometer is adaptable to numerous engine/cylinder configurations.



### Redline Single-Recall 2-5/8" Tachometer 69-001

Compact 2-5/8" tachometer reads up to 10,000 RPM and has a single high-RPM recall. Small diameter makes it easy to install in tight locations. Tachometer also features an adjustable warning/shift light and will work with numerous engine/cylinder combinations.





## TACHOMETERS



63-001



63-002

### Redline Multi-Recall Tachometers

Precise 3" diameter tachometers combine accuracy and reliability with added multi-recall features. The built-in multi-recall function allows recalling the four highest (straightaway) and four lower (corner) RPM readings to help determine proper gearing, while the programmable shift light aids in performing timely shifts, when desired. Bright, LED-lit 0-10,000 RPM tachs are offered with black or white dial faces.

Part No.	Description
63-001	Multi-Recall Tachometer (White)
63-002	Multi-Recall Tachometer (Black)



611-099



611-100

### QuickTach LCD Recall Tachometers

Compact, accurate QuickTach features a 1-3/4" wide x 3/4" high LCD digital display with engine RPM, and can recall the highest RPM attained during the last race. RPM recall is automatically displayed for up to 15 minutes once the engine is shut down, and clears when the engine is re-started. A reset button allows users to reset the unit during racing. Light-weight unit has a waterproof aluminum case and is powered by a 9-volt battery. Not for use with magneto.

Part No.	Description
611-099	QuickTach, Checkered Flag
611-100	QuickTach, Black



**NEW!**

### QuickTach 2 611-102

Digital QuickTach 2 includes the ability to recall the four highest and four lowest RPM readings from the last race, aiding car set-up. USA-made tach features a bright white LED readout for quick, easy reading, and the compact 3" x 3" size provides eased mounting. Designed for 8-cylinder engines with 12- or 16-volt power, tach is sold complete with mounting bracket.



## DIGITAL GAUGES

### Quick Timer 67-107

GPS sensor-equipped 2-1/16" digital gauge measures if a completed lap was faster or slower than the previous lap. Faster? Green light and the time reduction is shown in the LED display. Slower? Red light, and the display shows just how much slower. The driver can experiment with different lines on the track and get immediate feedback on lap times. Great for road courses, circle track, or any kind of racing that crosses the same starting point each lap.



### Multi-Recall Digital Tachometer 611-106

Innovative tachometer combines the benefits of a compact, 4" wide x 2-1/2" high size with an easy-to-read, digital backlit display and a programmable RPM warning/shift light. Once the engine is shut off, the tach displays the (10) highest and (10) lowest RPM readings from the previous race, aiding car set-up. An RPM graph allows scrolling, selecting, and replaying all RPM events as desired. Compatible with multiple engine cylinder configurations



TIME		M.RPM		TIME	
No.	Hi	TIME	Lo	TIME	
1	8100	0:02:19	3290	0:03:53	
2	7300	0:04:61	3260	0:05:22	
3	7290	0:00:10	3500	0:01:44	
4	7240	0:08:73	1810	0:09:77	
5	7000	0:36:91	1660	0:37:70	
6	6990	0:06:22	3130	0:07:99	
7	6700	0:12:46	1880	0:13:47	
8	6690	0:14:60	2010	0:15:65	
9	6690	0:16:83	1660	0:17:90	
10	6600	0:35:45	2100	0:35:89	

### Digital Brake Bias Gauge Kit with Senders 67-101

Ultra-lightweight digital 2-1/16" brake bias gauge kit includes (2) 1600 PSI senders for front and rear brake pressure. Gauge will display either PSI or percentage, and features a high-PSI recall function. Perfect for setting brake bias and determining how much brake pressure is being used.



Gauge Pod Not Included

### Digital Brake Bias Gauge Replacement Parts:

Brake Bias Gauge Only  
67-015

Replacement 1600 PSI Sender (each)  
63-270





## GAUGE PANEL ACCESSORIES



61-720



61-721

### Brass 1/8" NPT Tee Fittings

Required when wiring in warning lights.

Part No.	Description
61-720	1/8" NPT "T"-Fitting, (2) Female Ports, (1) Male Port
61-721	1/8" NPT "T"-Fitting, (3) Female Ports



611-900



611-901



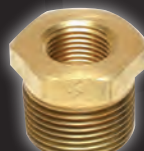
611-902



611-903



611-904



611-905

### Temperature Adapters

Used to connect mechanical water or oil temperature gauges to engine.

Part No.	Description
611-900	1/2" NPT Brass Adapter
611-901	1/2" NPT Aluminum Adapter
611-902	3/8" NPT Aluminum Adapter
611-903	3/8" NPT Extended Aluminum Adapter
611-904	1/8" NPT to 1/2" NPT Brass Adapter
611-905	1/8" NPT to 3/8" NPT Brass Adapter

*\* Note:* For use on applications where the temperature probe contacts the inside of the cylinder head before tightening. Typically required for most aluminum heads.



Example of LED Red Light Strip, Gauge Panel Not Included

### LED Red Light Strip 61-790

18" long red LED strip may be trimmed to length, and is typically mounted to the dashboard and wired to a warning light, quickly alerting the driver in the event of a problem. Sold complete with necessary wiring.

## Pressure and Temperature Switches



### Fuel Pressure Switch 61-730

Activates warning light when fuel pressure drops below 4 PSI. Switch has 1/8" NPT.



### Oil Temperature Switch 61-750

Activates warning light when oil temperature rises above 280°F. Has a 1/2" NPT thread.



### Oil Pressure Switches

Switches are offered to activate oil pressure warning light at 20 or 30 PSI. Switches have 1/8" NPT.

Part No.	Description
61-733	Oil Pressure Switch, Activates at 30 PSI
61-735	Oil Pressure Switch, Activates at 20 PSI



### Water Temperature Switches

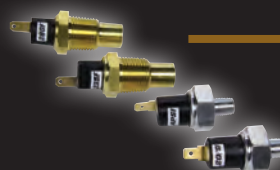
Activates warning light when water temperature rises to 235°F. Offered with 3/8" or 1/2" NPT.

Part No.	Description
61-740	Water Temperature Switch, 1/2" NPT
61-748	Water Temperature Switch, 3/8" NPT



### 3 Pack of Switches 61-751

Oil Pressure / Water Temperature / Fuel Pressure



### 4 Pack of Switches 61-752

Oil Pressure / Water Temperature / Fuel Pressure / Oil Temperature



## GAUGE PANEL ACCESSORIES

### Replacement Warning Lights

Replacement lights are designed for QuickCar panels and include snap-in design. Lights feature a more durable, non-brittle one-piece body.

Part No.	Description
61-701	Red
61-702	Blue
61-704	Amber
61-709	Green
61-706	4-Pc. Warning Light Kit Includes (1) Red, (1) Blue, (1) Amber and (1) Green Warning Light.



### LED Bulbs

LED bulbs fit into the back lighting of standar QuickCar gauges, offering bright, reliable illumination for improved gauge readability, while using less power. Perfect for 16V applications.

Part No.	Description
61-698	White LED Bulbs, 4-Pack
61-699	White LED Bulb, Each
61-691	Red LED Bulbs, Pair
61-692	Blue LED Bulbs, Pair
61-693	Amber LED Bulbs, Pair
61-694	Green LED Bulbs, Pair



### Fuel Pressure Isolator 61-300

Specialized isolator eliminates the hazards associated with driver's compartment-mounted fuel pressure gauges. Typically mounted to the engine side firewall, isolator is plumbed with the pressure source on the inlet side and an anti-freeze/water mix on the outlet, which connects to the gauge. Compatible with gasoline, alcohol, or methanol fuels, isolator is manufactured from black anodized, billet 6061-T6 aluminum for durability. Capable of monitoring pressures up to 80 PSI, unit is sold complete with -4AN adapter fittings, mounting bracket, and necessary hardware.



### 1" and 1-1/4" Hose Adapters

These adapters are designed to splice into radiator hose and allow a temp sender or bleeder valve to be installed where space is an issue.

Part No.	Description
61-756	1" Hose with 1/8" NPT port.
61-757	1-1/4" Hose with 1/2" NPT port.





## GAUGE PANEL ACCESSORIES



611-9015



611-90100

### Mini Fuel Pressure Gauges

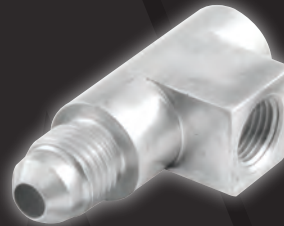
Ideally mounted to fuel pressure regulators or fuel logs, mini 1-1/2" diameter fuel pressure gauges are liquid-filled for added durability.

Part No.	Description
611-9015	0-15 PSI
611-90100	0-100 PSI



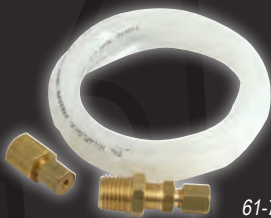
### Oil Temperature Manifold 61-755

Installed in-line to allow monitoring engine oil temperature, manifold is constructed from rigid billet aluminum and black anodized for corrosion resistance. Manifold includes -10AN O-ring boss inlet and outlet ports, and standard temperature gauge port.



### Aluminum Tee Fitting 61-722

Fitting includes a 1/8" NPT port to -4AN with 1/8" NPT side port for oil pressure sensor.



61-710



61-7101

### 1/8" NPT Pressure Gauge Line Kits

Designed to connect mechanical pressure gauges, kits are offered with copper or nylon tubing. Each kit is complete with required fittings

Part No.	Description
61-710	Nylon Gauge Line Kit
61-7101	Copper Gauge Line Kit



61-71012



61-724



61-725

### Pressure Gauge Line Kits

Each kit includes two 1/8" NPT to -4AN adapter fittings and -4AN stainless steel braided line to hook-up pressure gauges.

Part No.	Description
61-71012	Kit with 12" Line
61-71024	Kit with 24" Line
61-71036	Kit with 36" Line
61-71048	Kit with 48" Line
61-71060	Kit with 60" Line
61-724	1/8" NPT Female to -4AN Male Gauge Adapter (Each)
61-725	1/8" NPT Male to -4AN Male Gauge Adapter (Each)



63-71060

**NEW!**

### Braided Stainless Steel Gauge Line Kits

Kits provide eased connection to most electrical pressure gauges and sending units. Includes pre-assembled length of -4AN braided stainless steel hose with -4AN ends along with male and female 1/8" NPT adapters to work with most applications.

Part No.	Description
63-71012	Kit with 12" Line
63-71024	Kit with 24" Line
63-71036	Kit with 36" Line
63-71048	Kit with 48" Line
63-71060	Kit with 60" Line



**NEW!**

### Electronic Pressure Sender Adapter 63-722

Black anodized aluminum fitting, which includes a 1/8" NPT female on one end and a -4AN male on the opposite end, allows electronic pressure senders to be mounted remotely, away from heat and vibration associated with the engine.



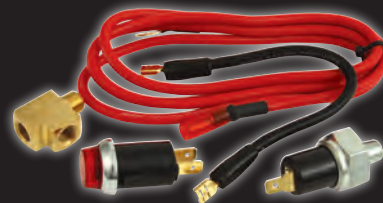
## GAUGE PANEL ACCESSORIES

### Quick-Lite Warning Light Kits

Warning light kits are designed to immediately alert the driver of any engine problems. Each kit is sold complete with warning light, pressure/temperature switch, and wiring.

#### Oil Pressure Kit 61-711

Kit includes a red warning light, pressure sending unit that activates the warning light if oil pressure drops below 20 PSI, brass in-line tee for oil pressure line, and necessary pre-terminated wiring.



#### Water Temperature Kit 61-712

Kit includes a blue warning light, temperature sending unit that activates the warning light if water temperature exceeds 235°F, and necessary pre-terminated wiring.



#### Water Pressure Kit 61-713

Kit includes a blue warning light, pressure sending unit that activates the warning light if water pressure drops below 4 PSI, and necessary pre-terminated wiring. Kit provides instant notice of coolant pressure loss such as a blown hose, radiator, or head gasket leakage. Sending unit may be installed virtually anywhere in the cooling system.



#### Oil Temperature Kit 61-714

Kit includes an amber warning light, temperature sending unit that activates the warning light if oil temperature exceeds 280°F, and necessary pre-terminated wiring.



#### Fuel Pressure Kit 61-719

Kit includes a green warning light, pressure sending unit that activates the warning light if fuel pressure drops below 4 PSI, brass in-line tee, and necessary pre-terminated wiring.



#### Water Pressure Kit with 2-1/16" Dia. Gauge 61-716

Keep track of spikes or loss of cooling system pressure that can cause catastrophic engine failure if it goes unnoticed. Kit is similar to 61-713, but with the addition of a QuickCar 2-1/16" diameter mechanical 0-35 PSI water pressure gauge. Also includes blue warning light, pressure sending unit that activates the warning light if water pressure drops below 4 PSI, brass in-line tee, and necessary pre-terminated wiring.

Part No.	Description
61-697	Replacement LED Bulb
611-6008	Replacement Gauge, 0-35 PSI





## WRAPAROUND GAUGE PANELS

Innovative Wraparound Gauge Panels not only offer a professional appearance, but provide improved gauge placement. Offered in lightweight fiberglass or genuine carbon fiber, panels are 33" wide x 7" high x 13-1/2" deep, with a 1" lip. White or black gel-coated fiberglass panels include gauges for oil pressure, water temperature, oil temperature, and fuel pressure, and are completely pre-wired and ready for installation. Carbon fiber panel is sold less gauges to allow customization.



**Wraparound Fiberglass  
Gauge Panel with  
Standard Gauges**  
61-6724 and 61-6024

**Wraparound Fiberglass  
Gauge Panel with  
Extreme Gauges**  
61-7724 and 61-7024

**Wraparound  
Genuine Carbon Fiber  
Gauge Panel**  
61-903



## SPRINT CAR GAUGE PANELS

### Deluxe Sprint Gauge Panels

Innovative two-gauge panels feature a self-contained low oil pressure warning system. Panels are fitted with QuickCar 2-5/8" diameter oil pressure and water temperature gauges. Lightweight aluminum panel is sold complete with quick fasteners and battery.

Part No.	Description
61-6005	Aluminum Gauge Panel
61-6005-1	Aluminum Gauge Panel, Includes Magneto Switch



61-6005

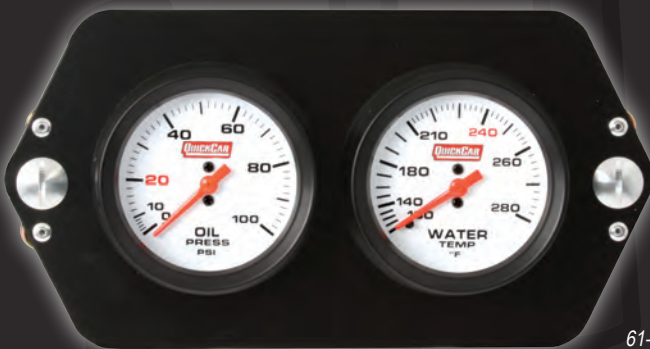


Rear View

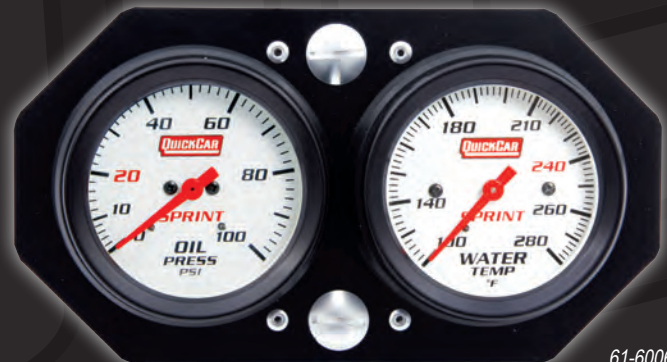
### Pro Sprint Gauge Panels

Two-gauge panels weigh less than 1 lb., yet are very durable. Panels are fitted with QuickCar 2-5/8" diameter oil pressure and water temperature gauges. Lightweight aluminum panel is sold complete with quick fasteners and battery.

Part No.	Description
61-6004	Aluminum Gauge Panel
61-6006	Aluminum Gauge Panel, Vertical Mount



61-6004



61-6006



Rear View



Rear View

### Replacement Gauges

Gauges include mounting grommet.

Part No.	Description
611-6004	Oil Pressure, 0-100 PSI
611-6005	Water Temperature, 100°F - 280°F



611-6004



611-6005



# SPRINT CAR GAUGE PANELS



61-2204



61-2205

## Open Wheel Gauge Panels

Two-gauge panels feature 2-1/16" short sweep gauges with white faces mounted in black aluminum panels. Gauges are lightweight, without any backlighting, and are specifically designed for use with open wheel racecars such as midgets and sprint cars.

Part No.	Description
61-2204	Open Wheel Panel 6-3/4" W x 3" H
61-2205	Open Wheel Panel with Switch 6-3/4" W x 4-1/16" H



611-6204

611-6205

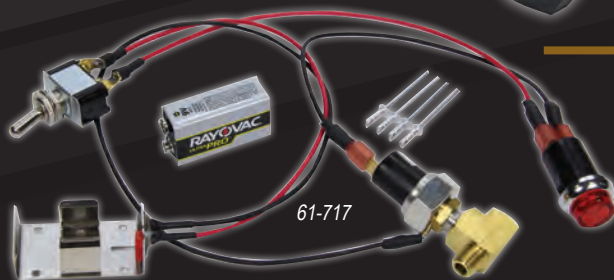
## Replacement Gauges

Gauges include mounting bracket.

Part No.	Description
611-6204	2-1/16" Open Wheel Oil Pressure Gauge -4AN
611-6205	2-1/16" Open Wheel Water Temperature Gauge, 36" Lead



## Extended Temperature Adapter Bung 611-903



61-717

## Oil Pressure Warning Kits

Self-contained kits, powered by a 9-volt battery, provide immediate warning of oil pressure loss. Completely pre-wired and ready to install, kit includes switch, tee fitting, oil pressure sending unit, and battery. Deluxe kit upgrades to an aluminum tee fitting, and a weatherproof switch.

Part No.	Description
61-717	Oil Pressure Warning Kit
61-718	Deluxe Oil Pressure Warning Kit



**NEW**

## Extreme Sprint Car Panel with Battery 611-7705

Lightweight panel is fitted with Extreme 2-5/8" diameter, mechanical oil pressure, water temperature gauges, and activation switch. LED-lit gauges, which are powered by a built-in compact 12-volt battery, switch automatically from white to designated color in the event that a problem arises.



## SPRINT CAR GAUGE PANELS

### Digital Open Wheel Gauge Panels

Lightweight aluminum panels have digital 2-1/16" diameter oil pressure and water temperature gauges with bright blue readout and graduated scale for increased readability. Built-in warning lights can be preset with the touch of a finger to cause the light to flash in the event of a problem. Weather-resistant, self-contained panels are powered by an included compact 12-volt rechargeable battery pack, and come with a charger. Also available for vehicles with existing 12-volt power.

Part No.	Description
67-2004	Open Wheel Gauge Panel, For Cars with 12-Volt Power, 6-3/4" W x 3" H
67-2005	Open Wheel Gauge Panel, Self-Contained, 6-3/4" W x 4-1/16" H



67-2004



67-2005

### Digital Open Wheel Gauge Panels Replacement Parts

Part No.	Description
67-003	Oil Pressure Gauge
67-006	Water Temperature Gauge
63-225	Water Temperature Sender 2-Wire
63-230	Oil Pressure Sender
63-604	Replacement Battery Charger for 67-2005 Panel
63-605	Replacement Battery Pack for 67-2005 Panel



67-003



67-006



63-225



63-230



63-604



63-605



## SPRINT CAR GAUGE PANELS



### Redline Open Wheel Gauge Panels

Lightweight aluminum panels feature Redline 2-5/8" oil pressure and water temperature stepper gauges. Gauges are pre-programmed to change colors and flash when problem arises. The warning levels are adjustable using the button on the gauge face. Panels are sold completely pre-wired for easy installation and include all necessary senders, and are also available in a self-contained format with 12-volt rechargeable battery and charger.

Part No.	Description
69-2004	Open Wheel Gauge Panel, for Cars with 12-Volt Power, 8-5/8" W x 4-1/2" H
69-2005	Open Wheel Gauge Panel, Self-Contained Battery, 8-5/8" W x 4-1/2" H



69-2004



69-2005



69-003



69-006



63-605



63-230



63-225



63-604

### Open Wheel Gauge Panels Replacement Parts

Part No.	Description
69-003	Oil Pressure Gauge
69-006	Water Temperature Gauge
63-225	Water Temperature Sender, 2-Wire
63-230	Oil Pressure Sender
63-604	Replacement Battery Charger for 69-2005 Panel
63-605	Replacement Battery Pack for 69-2005 Panel



### Offset Sprint Gauge Grommet 61-727

Special rubber grommet secures 2-5/8" diameter gauges into mounting panel, replacing traditional saddle brackets. Offsets gauges toward driver, while reducing gauge vibration for easier reading.

### Sprint Car Wiring Harness 50-7220

Specialized harness is used to connect MSD box and tachometer to included kill switch.



**NEW!**



## IGNITION CONTROL PANELS

QuickCar has become the industry leader in ignition control panels. Panels include bridged double-pole switches and large-gauge wiring with heavy-duty connectors for improved conductivity and reliability. Panels are pre-wired to connect directly to our wiring harnesses. Please refer to page 49 for the proper wiring harness.

### Ignition Control Panels Cont. (Checkered Flag)

#### Ignition Control Panel

##### 50-020

Compact ignition panel includes push-to-start button, weatherproof ignition and an accessory switch. Panel is 4-5/8" wide x 2-1/2" high. Direct, plug-in installation using the 50-200 or 50-201 wiring harness.



#### Ignition Control Panels

Ignition control panels are 3-3/8" wide x 3-5/8" high. Panels have push-to-start button and ignition switch. Available with or without ignition switch flip cover. A direct plug-in installation using 50-200 or 50-201 wiring harness.

Part No.	Description
50-102	Ignition Control Panel
50-103	Ignition Control Panel w/ Flip Switch Ignition Cover



50-102



50-103

#### Ignition Control Panels

Panels, which are 3-3/8" wide x 4-1/4" high, include ignition switch, push-to-start button, and pilot light. Choice of panels with or without ignition switch flip cover. A direct plug-in installation using 50-200 or 50-201 wiring harness.

Part No.	Description
50-052	Ignition Control Panel
50-053	Ignition Control Panel w/ Flip Switch Ignition Cover



50-052



50-053



# IGNITION CONTROL PANELS



## Ignition Control Panels Cont. (Black)



### Ignition Control Panel 50-820

Compact ignition panel includes push-to-start button, weatherproof ignition switch, and an accessory switch. Panel is 4-5/8" wide x 2-1/2" high. Direct, plug-in installation using the 50-200 or 50-201 wiring harness.



50-802



50-803

### Ignition Control Panels

Ignition control panels are 3-3/8" wide x 3-5/8" high. Panels have push-to-start button and ignition switch. Available with or without ignition switch flip cover. A direct plug-in installation using 50-200 or 50-201 wiring harness.

Part No.	Description
50-802	Ignition Control Panel
50-803	Ignition Control Panel w/ Ignition Switch Flip Cover



50-852



50-853

### Ignition Control Panels

Panels are 3-3/8" wide x 4-1/4" high and include ignition switch, push-to-start button, and pilot light. Choice of panels with or without ignition switch flip cover. A direct plug-in installation using 50-200 or 50-201 wiring harness.

Part No.	Description
50-852	Ignition Control Panel
50-853	Ignition Control Panel w/ Ignition Switch Flip Cover



## IGNITION CONTROL PANELS (Checkered Flag)

### Ignition Control Panels with Single Accessory Switch

Panels include ignition switch, push-to-start button, accessory switch, and two pilot lights. Panels are 4-5/8" wide x 4-3/8" high. Choice of panels with or without ignition switch flip cover. A direct plug-in installation using 50-200 or 50-201 wiring harness.

Part No.	Description
50-022	Ignition Control Panel
50-023	Ignition Control Panel w/ Ignition Switch Flip Cover



50-022



50-023

### Ignition Control Panel with Two Accessory Switches 50-025

Panel includes ignition switch, push-to-start button, two accessory switches, and three pilot lights. Panel is 4-5/8" wide x 4-3/8" high. A direct plug-in installation using 50-200 or 50-201 wiring harness.



### Basic Ignition Wiring Harnesses

Ready-to-install, basic wiring harness eases the car building process. Each harness is 5' long and includes four individually colored wires. Sold complete terminated into the direct plug-in connector.

Part No.	Description
50-200	Basic Wiring Harness
50-201	Basic Wiring Harness, HEI





## IGNITION CONTROL PANELS (Black)



### Ignition Control Panels with Single Accessory Switch

Panels include ignition switch, push-to-start button, accessory switch, and two pilot lights. Panels are 4-5/8" wide x 4-3/8" high. Choice of panels with or without switch flip cover. A direct plug-in installation using 50-200 or 50-201 wiring harness.

Part No.	Description
50-822	Ignition Control Panel
50-823	Ignition Control Panel w/ Ignition Switch Flip Cover



50-822

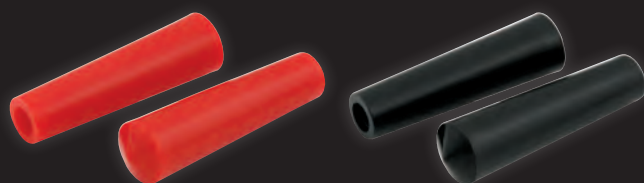


50-823



### Ignition Control Panel with Two Accessory Switches 50-825

Panel includes ignition switch, push-to-start button, two accessory switches, and three pilot lights. Panel is 4-5/8" wide x 4-3/8" high. A direct plug-in installation using 50-200 or 50-201 wiring harness.



### Toggle Switch Extensions

Push-on switch extensions ease toggle switch activation, particularly when wearing driving gloves. Sold in pairs in choice of red or black.

Part No.	Description
50-524	Red, Two-Pack
50-526	Black, Two-Pack



## IGNITION CONTROL PANELS (Checkered Flag)

### Ignition Control Panel 50-165

Compact ignition panel includes ignition switch, momentary start button, and five accessory switches. Panel is 6-7/8" wide x 2" high.



### Fused Ignition Control Panel 50-163

Panel features fused ignition switch, momentary start button, and five fused accessory switches. Panel is 6-7/8" wide x 3-1/4" high.



### Ignition Control Panel 50-166

Similar to the 50-165 ignition panel, but with the addition of six pilot lights. Panel is 6-7/8" wide x 3-1/4" high and includes ignition switch, momentary starter button, five accessory switches, and six pilot lights.



### Fused Ignition Control Panel 50-164

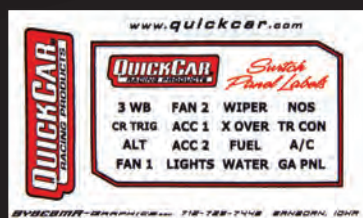
Similar to the 50-163 ignition panel, but slightly larger with the addition of six pilot lights. Includes fused ignition switch, momentary starter button, five fused accessory switches, and six pilot lights. Panel is 6-7/8" wide x 4-1/8" high.



### Switch Panel Sticker Kits

Customize QuickCar ignition control panels quickly and easily, while keeping a professional appearance. Sticker kit includes labels for 16 common functions that may be activated with accessory switches.

Part No.	Description
50-003	Sticker Kit for QuickCar Panels with Six or More Switches





## IGNITION CONTROL PANELS (Black)



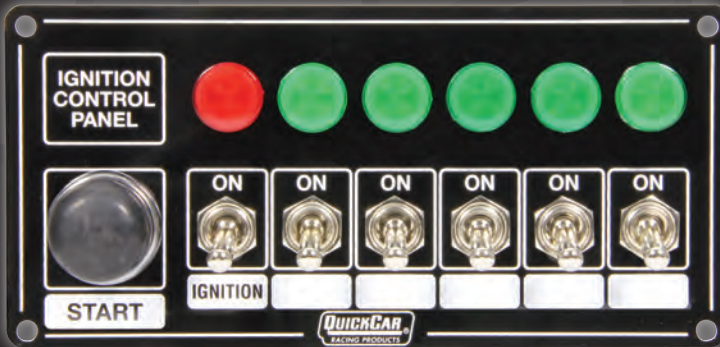
### Ignition Control Panel 50-865

Compact ignition panel includes ignition switch, momentary start button, and five accessory switches. Panel is 6-7/8" wide x 2" high.



### Fused Ignition Control Panel 50-863

Panel features fused ignition switch, momentary start button, and five fused accessory switches. Panel is 6-7/8" wide x 3-1/4" high.



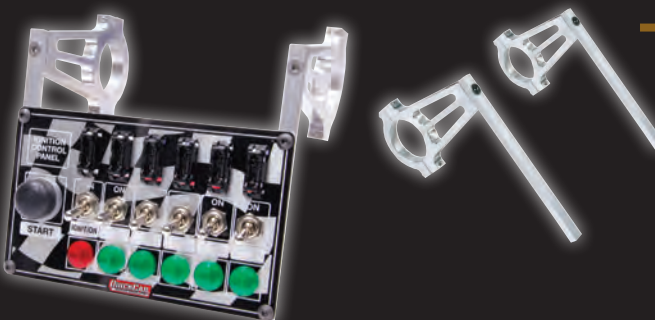
### Ignition Control Panel 50-866

Similar to the 50-865 ignition panel, but with the addition of six pilot lights. Panel is 6-7/8" wide x 3-1/4" high and includes ignition switch, momentary starter button, five accessory switches, and six pilot lights.



### Fused Ignition Control Panel 50-864

Similar and a bit larger than the 50-863 ignition panel, but with the addition of six pilot lights. Includes fused ignition switch, momentary starter button, five fuse accessory switches, and six pilot lights. Panel is 6-7/8" wide x 4-1/8" high. For weatherproof switches, use part number 50-7164.



### Roll Bar-to-Switch/Gauge Panel Mounting Brackets

Specialized brackets allow quick mounting gauge or switch panels to roll bar. Mounts virtually any height panel. Simply trim off any extra bracket length, if desired. Available to mount to 1-1/2", 1-5/8", or 1-3/4" diameter roll bar. Sold in pairs.

Part No.	Description
66-939	Switch Panel Mounting Bracket, 1-1/2" Roll Bar
66-940	Switch Panel Mounting Bracket, 1-3/4" Roll Bar
66-945	Switch Panel Mounting Bracket, 1-5/8" Roll Bar



## IGNITION CONTROL PANELS

### Weatherproof Ignition Control Panels

Weatherproof switch panels are 3-3/8" wide x 3-1/2" high and are a direct plug-in to the 50-200, 50-201, or \*50-2031 wiring harness.

Part No.	Description
50-750	Ignition Control Panel, Use with 50-200 or 50-201 Harness
50-7531	Single Ignition Control Panel, Use with 50-2031 *Harness

50-750



### Weatherproof Ignition Control Panels With Single Accessory Switch

Weatherproof panels include ignition, momentary starter, and single accessory switches. Panels are 4-5/8" wide x 2-1/2" high and are a direct, plug-in to the 50-200, 50-201, 50-2021 (dual ignition), or \*50-2031 (single ignition) wiring harnesses.

Part No.	Description
50-720	Ignition Control Panel, Use 50-200 or 50-201 Harness
50-711	Dual Ignition Control Panel, Use 50-2021 Harness
50-731	Single Ignition Control Panel, Use 50-2031 *Harness

50-720



### Weatherproof Ignition Control Panels With Two Accessory Switches

Weatherproof panels with switches for momentary start, ignition, and two accessories. Panels are 4-1/8" wide x 3" high and are a direct plug-in to the 50-200, 50-201, 50-2021 (dual ignition), or \*50-2031 (single ignition) wiring harnesses.

Part No.	Description
50-740	Ignition Control Panel, Use with 50-200 or 50-201 Harness
50-7411	Dual Ignition Control Panel, Use 50-2021 Harness
50-7431	Single Ignition Control Panel, Use 50-2031 * Harness
50-7414	Single Ignition Control Panel with Dual Pick-Up Distributor, Use with 50-2034 Harness

50-740



### Weatherproof Ignition Control Panels With Three Accessory Switches

Weatherproof panels include ignition, momentary starter, and three accessory switches. Panels are 4-1/8" wide x 3" high.

Black Part No.	Checked Part No.	Description
50-7711	50-1711	Dual Ignition Control Panel, Use with 50-2021 Harness
50-7713	50-1713	Dual Ignition Control Panel w/3-Wheel Braking, Use with 50-2021 Harness
50-7714	50-1714	Single Ignition Control Panel with Dual Pickup Distributor, Use with 50-2034 Harness
50-7731	50-1731	Single Ignition Control Panel w/3-Wheel Braking, Use with 50-2031 *Harness
50-7739	—	5 Switch Kit With Decal 50-2031 *Harness

50-7731



### 5 Switch Kit With Decal 50-7739

Includes 1 momentary start switch, ignition switch, and 3 accessory weatherproof switches all pre-wired for use with the \*50-2031 harness.



\* Single Ignition Switch Panels That Fit Harness 50-2031 Will Also Fit with These Harnesses: 50-2032, 50-2033, 50-2035, 50-2039, 50-2051, 50-2053



## IGNITION CONTROL PANELS



### Weatherproof Fused Ignition Control Panel 50-7164

Ignition panel combines the benefits of weatherproof, precision micro-switches with built-in fuse access and a compact, 6-7/8" wide x 4-1/8" high size. Includes momentary start, ignition, and five accessory switches.



50-7611

### Weatherproof Ignition Control Panels with Four Accessory Switches

Weatherproof switch panels measure 3-1/4" wide x 4-1/2" high, and are a direct plug-in to the \*50-2031, 50-2021, or 50-2034 wiring harness. Includes ignition, momentary start, and 4 accessory switches.

Part No.	Description
50-7611	Ignition Control Panel, Use with 50-2021 Harness
50-7631	Ignition Control Panel, Use with 50-2031 *Harness
50-7614	Ignition Control Panel, Use with 50-2034 Harness



50-790

### Weatherproof Ignition Control Panels with Single Accessory Switch

Weatherproof panels include ignition, momentary start, and single accessory switches. Panels are 2-1/2" wide x 4-5/8" high and are a direct, plug-in to the 50-200, 50-201, 50-2021 (dual ignition), or 50-2031\* (single ignition) wiring harnesses.

Part No.	Description
50-790	Ignition Control Panel, Use 50-200 Or 50-201 Harness
50-7911	Dual Ignition Control Panel, Use 50-2021 Harness
50-7931	Single Ignition Control Panel, Use 50-2031 *Harness



50-031

### Ignition Control Panels with Single Accessory Switch

Pre-wired switch panels include ignition switch, push-to-start button, and choice of single accessory or 3-wheel brake switch. Panels are 4-5/8" wide x 2-1/2" high. A direct plug-in installation using the \*50-2031 wiring harness.

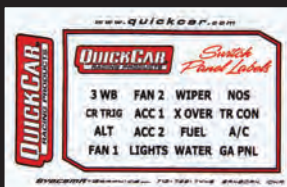
Part No.	Description
50-031	Single Ignition Control w/Accessory Switch
50-033	Single Ignition Control w/3-Wheel Brake Switch



### Weatherproof Panels with Four Accessory Switches

Weatherproof black switch panel with four accessory switches. Panels measure 4-1/8" wide x 3" high and are available with and without lights.

Part No.	Description
50-718	Four switch panel, lighted
50-719	Four switch panel, non-lighted



### Switch Panel Sticker Kits

Customize QuickCar ignition control panels quickly and easily, while keeping a professional appearance. Sticker kits includes labels for 16 common functions that may be activated with accessory switches.

Part No.	Description
50-004	Sticker Kit for QuickCar Panels with Five or Fewer Switches

\* Single Ignition Switch Panels That Fit Harness 50-2031 Will Also Fit with These Harnesses: 50-2032, 50-2033, 50-2035, 50-2039, 50-2051, 50-2053



## IGNITION CONTROL PANELS

### Ignition Control Panels with Accessory Rocker Switches

Similar in quality and construction to traditional QuickCar ICP's, but with premium rocker switches. Panels feature 25-amp capacity switches that are dust/water-resistant and include screw-on terminal connections. Offered in checkered flag or black, panels are completely pre-wired and ready to install. May be plugged directly into 50-200 or 50-201 wiring harnesses, if desired.

#### 52-165 (Checkered Flag)

#### 52-865 (Black)

Includes ignition switch, momentary starter switch, and three accessory switches. Measures 7" wide x 3" high.

52-165



52-865



#### 52-166 (Checkered Flag)

#### 52-866 (Black)

Similar to the above panels, but with rocker switches that illuminate upon activation. Includes illuminated ignition switch, momentary starter switch, and three illuminated accessory switches. Measures 7" wide x 3" high.

52-166



52-866



#### 52-163 (Checkered Flag)

#### 52-863 (Black)

Panel features the addition of fused rocker switches for added electrical system protection. Includes fused ignition switch, momentary starter switch, and three fused accessory switches. Measures 7" wide x 3-1/2" high.

52-163



52-863





## IGNITION CONTROL PANELS



### Ignition Control Panels with Accessory Rocker Switches Cont.



52-164



52-864

### 52-164 (Checkered Flag) 52-864 (Black)

Top-of-the-line panel incorporates rocker switches that are fused and illuminated. Includes illuminated and fused ignition switch, momentary starter switch, and three illuminated and fused accessory switches. Measures 7" wide x 3-1/2" high.



52-716



52-717

### Accessory Rocker Panels

Black aluminum panel with four 25-amp capacity rocker switches. Panels measure 5-3/4" wide x 3" high and are available with and without lights.

Part No.	Description
52-716	Four Rocker Switch Panel, Non-lighted
52-717	Four Rocker Switch Panel, Lighted



52-500

52-601

### Replacement/Accessory Rocker Switches

Part No.	Description
52-500	On/Off Rocker Switch
52-510	Momentary Start Rocker Switch
52-512	Momentary/On/Off Rocker Switch
52-601	Lighted On/Off Rocker Switch, Red
52-602	Lighted On/Off Rocker Switch, Blue
52-604	Lighted On/Off Rocker Switch, Amber
52-609	Lighted On/Off Rocker Switch, Green
52-615	Lighted On/Off/On Rocker Switch, Green



## IGNITION CONTROL PANELS

### Circuit Breaker Panels

Attractive, gloss black Ignition Control Panels include premium 20-amp circuit breakers for the ultimate in electrical system protection. Circuit breakers utilize an easily resettable design. Panels are completely pre-wired and ready to install.

#### 50-868

Panel includes push-to-start button, ignition toggle switch, and five accessor toggle switches, complete with circuit breakers. Measures 6-7/8" wide x 4" tall.



#### 50-869

Similar to the above panel, but 1" taller to accommodate the addition of six pilot lights. Measures 6-7/8" wide x 5" tall.



### Replacement Resettable Circuit Breakers

Circuit breakers may be reset with the touch of a button. Offered in various amp ratings, heavy-duty design circuit breakers include screw connectors to ensure positive connections.

Part No.	Description
50-9715	15 Amp
50-9720	20 Amp
50-9725	25 Amp
50-9730	30 Amp



50-9715



50-9720



50-9725



50-9730

### Clear Boot 50-700

Clear protective boot for resettable circuit breakers. Protects circuit breaker from dirt and moisture.



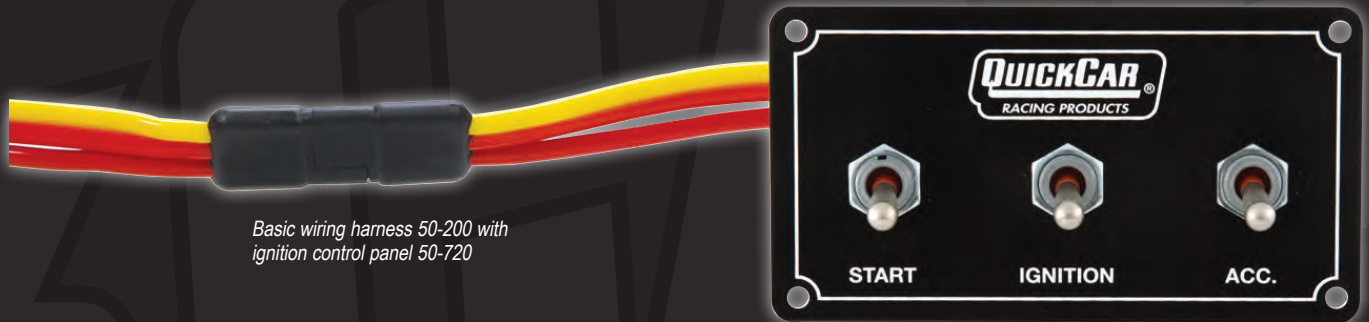


## Wiring Harnesses

QuickCar offers a wide variety of wiring harnesses, each designed exclusively for use with their popular ignition control panels. Each harness includes the necessary terminations and a direct plug-in connector for easy installation. Simply refer to the "Switch Panel to Wiring Harness Chart" to select the proper harness.

## Switch Panel to Wiring Harness Chart

The ignition switch panels listed below are designed as a direct plug-in installation to a specific wiring harness, significantly easing and speeding-up the car building process. The chart identifies the proper wiring harness for each ignition switch panel.



Ignition Switch Panel	Wiring Harness
50-020 / 50-820	50-200 (Basic) or 50-201 (HEI)
50-022 / 50-822	50-200 (Basic) or 50-201 (HEI)
50-023 / 50-823	50-200 (Basic) or 50-201 (HEI)
50-025 / 50-825	50-200 (Basic) or 50-201 (HEI)
50-031	*50-2031 (Single Ignition)
50-033	*50-2031 (Single Ignition)
50-052 / 50-852	50-200 (Basic) or 50-201 (HEI)
50-053 / 50-853	50-200 (Basic) or 50-201 (HEI)
50-102 / 50-802	50-200 (Basic) or 50-201 (HEI)
50-103 / 50-803	50-200 (Basic) or 50-201 (HEI)
50-163 / 50-863	No Harness Needed
50-164 / 50-864	No Harness Needed
50-165 / 50-865	No Harness Needed
50-166 / 50-866	No Harness Needed
50-1711 / 50-7711	50-2021 (Dual Ignition)
50-1713 / 50-7713	50-2021 (Dual Ignition)
50-1714 / 50-7714	50-2034 (Dual Pickup Ignition)
50-711	50-2021 (Dual Ignition)
50-7164	No Harness Needed

Ignition Switch Panel	Wiring Harness
50-720	50-200 (Basic) or 50-201 (HEI)
50-731	*50-2031 (Single Ignition)
50-740	50-200 (Basic) or 50-201 (HEI)
50-7411	50-2021 (Dual Ignition)
50-7414	50-2034 (Dual Pickup Ignition)
50-7431	*50-2031 (Single Ignition)
50-750	50-200 (Basic) or 50-201 (HEI)
50-7531	*50-2031 (Single Ignition)
50-7611	50-2021 (Dual Ignition)
50-7631	*50-2031 (Single Ignition)
50-7614	50-2034 (Dual Pickup Ignition)
50-7731	*50-2031 (Single Ignition)
50-7739	*50-2031 (Single Ignition)
50-790	50-200 (Basic) or 50-201 (HEI)
50-7911	50-2021 (Dual Ignition)
50-7931	*50-2031 (Single Ignition)
50-868	No Harness Needed
50-869	No Harness Needed
52 Series Rocker Switch Panels	50-200 (Basic) or 50-201 (HEI)

\* Single Ignition Switch Panels That Fit Harness 50-2031 Will Also Fit These Harnesses: 50-2032, 50-2033, 50-2035, 50-2039, 50-2051, 50-2053



## IGNITION CONTROL PANEL ACCESSORIES

### Replacement Components

Designed specifically for QuickCar ignition control panels.

Part No.	Description
50-500	Standard Single-Pole Switch
50-501	Aircraft Flip Switch Cover
50-503	Magneto Switch, 6-Post
50-504	3-Wheel Brake Switch w/ Rubber Cover
50-505	Bridged Double-Pole Switch
50-506	Ignition w/ Start Switch
50-508	Long Handle Single-Pole Switch
50-510	Push-to-Start Momentary Switch
50-512	Momentary Toggle Switch
50-601	Red Pilot Light
50-602	Blue Pilot Light
50-604	Amber Pilot Light
50-609	Green Pilot Light
50-610	Replacement Rubber Boot for Switch



50-500



50-501



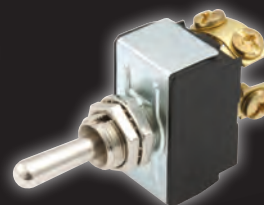
50-503



50-504



50-505



50-506



50-508



50-510



50-512



50-610



50-601



50-602



50-604



50-609

### ATC Fuses

Designed for use in QuickCar Switch Panels, fuses are offered in a variety of amp ratings. ATC fuses are used in QuickCar's fused ignition control panels such as 50-864. Sold in packs of 5.

Part No.	Description
50-905	5 Amp
50-910	10 Amp
50-915	15 Amp
50-920	20 Amp
50-925	25 Amp
50-930	30 Amp
50-960	Fuse Assortment, 5 of Each Fuse



50-920



50-925



50-930



50-905



50-910



50-915

### 12 Gauge In-Line ATC Fuse Holder 50-955

In-line fuse holder can be installed in a power wire to protect valuable electrical components. Includes 1 each: 5 amp, 10 amp, 15 amp, 20, amp, 25 amp, and 30 amp fuses.



### Line Clamps

The professional method when securing fuel lines, electrical wiring, etc. to chassis. Choose from rubber-coated steel, aluminum, or nylon. Sold in packs of 10.

Clamp Size	Steel	Aluminum	Nylon
1/8"	—	—	66-809
1/4"	66-850	66-830	66-810
3/8"	66-852	66-832	66-812
1/2"	66-854	66-834	66-814
5/8"	66-856	66-836	66-816
3/4"	66-858	66-836	66-818
1"	66-860	66-840	66-820



Steel



Aluminum



Nylon



# IGNITION CONTROL PANEL ACCESSORIES



## Weatherproof Micro-Switches

QuickCar offers a wide variety of weatherproof micro-switches and circuit breakers. Well-suited for replacement purposes or when building custom switch panels.

Part No.	Description
50-400	Momentary Start Micro-Switch Switch
50-401	Momentary-Off-Momentary Single-Pole Micro-Switch
50-402	Momentary-Off-Momentary Double-Pole Micro-Switch
50-410	On-Off Single Pole Micro-Switch
50-415	On-Off-On Micro-Switch
50-417	On-On Micro-Switch
50-420	On-On Double-Pole Crossover Micro-Switch
50-422	20-Amp Circuit Breaker
50-424	40-Amp Circuit Breaker
50-502	Weatherproof Magneto Micro-Switch



50-400



50-401



50-402



50-410



50-415



50-417



50-424



50-502



50-420



50-422



## HD Switch with Flip Switch Cover 50-520

Heavy-duty switch includes an aircraft-type flip switch cover.



## HD Switch with Black Switch Cover 50-522

Heavy-duty switch includes a weatherproof black switch cover.



## WIRING HARNESSES

### Basic Ignition Wiring Harnesses

Ready-to-install basic wiring harnesses ease the car building process. Each harness is 5' long and includes four individually labeled wires complete with plug-in connector.

Part No.	Description
50-200	Basic Wiring Harness
50-201	Basic Wiring Harness, HEI



50-200

### Modified Ignition Wiring Harness Kits

Universal harness for UMP/IMCA modified will connect all ignition components. Includes switch panel with weatherproof switches.

Part No.	Description
50-2030	Wiring Harness Kit with Checkered Panel
50-2033	Wiring Harness Only
50-2037	Wiring Harness Kit with Black Panel



50-2030

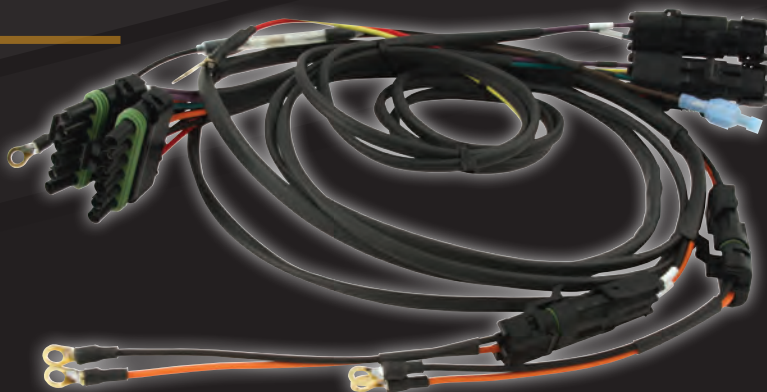
### Single Ignition Wiring Harness 50-2031

A universal Weatherpack harness for race cars utilizing a single-box ignition system. Wiring harness connects the following items: ignition box, coil, distributor, starter solenoid, tachometer, and switch panel.



### Dual Ignition Wiring Harness 50-2021

A universal Weatherpack harness for race cars using a dual-box ignition system. Wiring harness connects the following items: 2 ignition boxes, 2 coils, 2 distributor pick-ups, starter solenoid, tachometer, and switch panel.





## WIRING HARNESSES



### HEI Ignition Wiring Harness 50-2032

Universal wiring harness is designed for applications using an HEI ignition system. Wiring harness connects the following items: HEI distributor power and tach, switch panel, starter solenoid, and tachometer.



### Crane/FAST HI-6RC Harness 50-2051

Specialized wiring harness is designed for cars using a single Crane/FAST T HI-6RC Ignition system. Sold complete with wiring and connectors. For use with any ignition panel that fits the 50-2031. Wiring harness connects the following items: ignition box, coil distributor, starter solenoid, tachometer, and switch panel.



### Spec Asphalt Late Model Harness 50-2053

Legal for most asphalt late model series. QuickCar's spec harness is a plug-n-play for the FAST 6700-6701, JMS Daytona Sensors 6000-6701k ignition box, and many of QuickCar's switch panels. It is constructed of Tefzel (Mil-Spec) wire, gold plated ring terminals, and weatherproof connectors. The harness comes serial numbered and hooks up main power, ground, ignition box, coil, distributor, tach, and has a starter solenoid lead. Comes standard with a 3-pin deutsch distributor lead.



### Dual Pickup Distributor Ignition Wiring Harness 50-2034

Universal Weatherpack wiring harness is designed for cars using a single ignition box and dual magnetic pickup distributor, or crank trigger/distributor combination. Wiring harness connects the following items: ignition box, coil, 2 distributor pickups, starter solenoid, tachometer, and switch panel.



### Single Ignition Harness With 3-Wheel Brake 50-2035

A Universal Weatherpack harness for dirt cars utilizing a single-box ignition system with a 3-wheel brake solenoid. Wiring harness hooks the following items together: ignition box, coil, distributor, starter solenoid, 3-wheel brake solenoid, tachometer, and switch panel.



### HEI Wiring Harness For MSD Soft Touch 50-2039

Wiring harness designed for cars using the MSD 8727CT digital Soft Touch Rev Control Limiter. Wiring harness hooks the rev limiter to a QuickCar switch panel, tachometer, and starter solenoid.



## IGNITION SYSTEM ACCESSORIES

QuickCar ignition wiring systems are used by many chassis builders and comply with specifications set by most sanctioning bodies

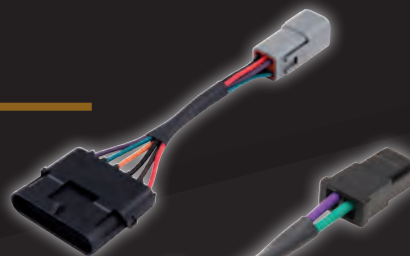
### Three-Piece Rubber Grommet Set 50-008

Set includes 3 different sized cone-shaped grommets for a 5/8", 1-1/8", and 1-1/2" holes. Grommets protect wires when routing through sheet metal, while also keeping dirt out of the cockpit.



### Deutsch Weatherpack Adapter 50-2007

Eases the installation of MSD HVC ignitions, adapting the Deutsch square 6-pin connector to a 6-pin flat male weatherpack connector.



### MSD Magnetic Pickup to Weatherpack Adapter 50-207

Specialized adapter eliminates the need to cut MSD magnetic pickup wires when converting primary ignition wiring to Weatherpack connectors.



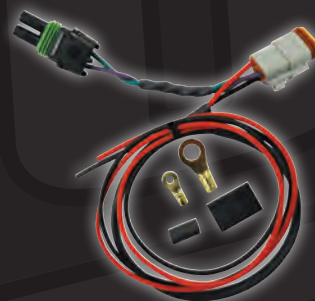
### MSD 6AL-2 Box Adapter **NEW!** 50-2005

Designed exclusively for use with the MSD Digital Programmable 6AL-2 6530 ignition, wiring harness adapts unit's Deutsch connectors to popular Weatherpack style. Includes connections for magnetic pickup, ignition coil and power leads.



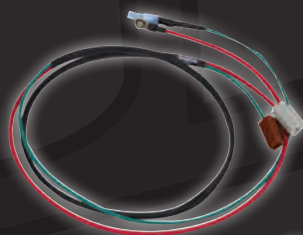
### Crane Ignition Distributor Adapter 50-2008

Specialized wiring adapter connects Crane Ignition distributors that use a 3-pin Deutsch connector to a 2-pin Weatherpack connector.



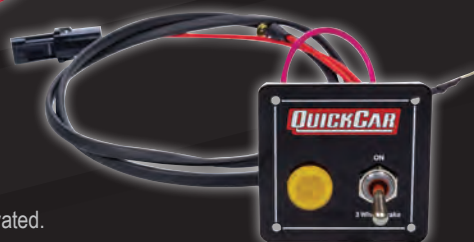
### HEI Distributor Lead 50-2009

Four-foot-long lead easily connects your HEI distributor to ignition switched power and to your tachometer signal wire.



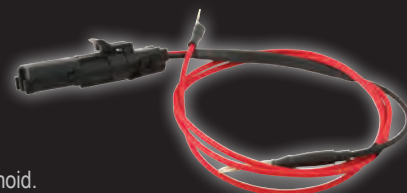
### 3-Wheel Brake Panel 50-035

3-wheel brake panel allows dirt racers to isolate their 3-wheel brake switch for ease of activation during the race. Panel includes a light to let the driver know when the 3-wheel brake solenoid is activated.



### 3-Wheel Brake Harness 50-034

Wiring harness with Weatherpack connector is used to supply power from the 3-wheel brake switch to the solenoid.





## IGNITION SYSTEM ACCESSORIES



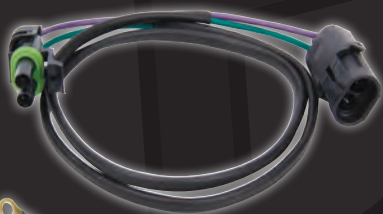
### Digital MSD Adapter 50-2006

Pigtail harness adapts an MSD Digital 6-ignition connector to a standard 6-pin flat mal Weatherpack connector.



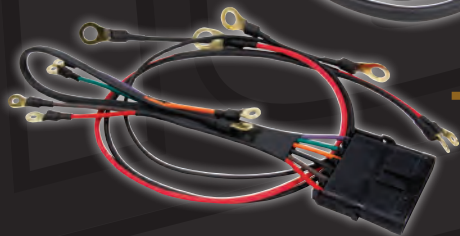
### NEW! Radiator Fan Harness 50-2010

Specialized wiring harness, designed for use with most popular electric fans, includes power leads with Weatherpack connectors, thereby easing fan installation.



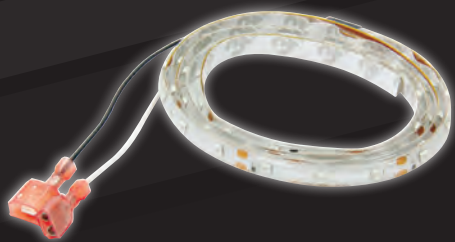
### Crank Trigger Wiring Harness Extension 50-206

Wiring harness is used to extend the common MSD purple/green wires 2-1/2 ft. for connection to the crank trigger on the front of the engine.



### 7AL-2 Plus Adapter 50-7222

Adapts the wiring connector of the popular MSD 7AL-2 Plus Ignition to a 6-pin Weatherpack connector.



### LED Light Strips

LED light strips can be placed virtually anywhere where lighting is desired: inside the driver's compartment, under the hood, etc. Offered in a variety of colors.

Part No.	Description
61-791	Yellow LED Strip
61-792	Blue LED Strip
61-793	Green LED Strip
61-794	Purple LED Strip
61-9790	Red LED Strip
61-9795	White LED Strip



### LED Under-Car Light Kit 61-795

Perfect for dark pit areas when an urgent under-car repair is required. Bright white, 18" long LED light strip. Installs easily under car or in any dark area.

Part No.	Description
61-9795	Replacement LED Strip with Connectors



## BATTERY CABLE KITS

### Battery Cable Kits

QuickCar Battery Cable Kits include 15 feet of red power cable, 2 feet of black ground cable, one pair of nickel-plated marine-style battery terminals, eight gold-plated power ring terminals, and heat-shrink tubing. All battery cables are made from copper.

Part No.	Description
57-008	4-Gauge, Side Mount
57-009	4-Gauge, Top-Post Mount
57-010	2-Gauge, Top-Post Mount
57-011	2-Gauge, Side Mount
57-014	4-Gauge, Top-Post Mount, Includes Master Disconnect Switch



### Drag Kit 57-012

QuickCar Drag Race Kit contains all you need to wire a dual-battery system. The kit includes 25 feet of 2-gauge red power cable, 8 feet of 2-gauge black ground cable, 2 pairs of nickel-plated brass marine-type battery terminals, 14 gold-plated power ring terminals, and heat-shrink tubing.



### Battery Ground Cables

Pre-terminated with gold-plated copper terminals for maximum conductivity, ground cables are 18" in length. Choose from 2- or 4-gauge.

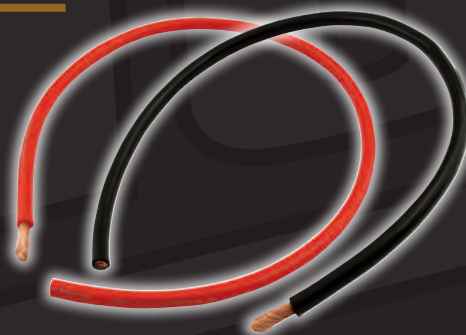
Part No.	Description
57-1809	4-Gauge
57-1810	2-Gauge



### Race Wire

Used by many racing teams and chassis builders. Constructed with very fine-stranded rope-lay copper wire for high flexibility and superior power flow with insulation capable of withstanding extreme temperatures.

Description	1'	5'	10'	15'	125' Roll
<b>2-Gauge</b>					
Red.	57-101	57-321	—	57-1521	57-102
Black	57-103	57-323	—	57-1523	57-104
<b>4-Gauge</b>					
Red.	57-091	57-341	—	57-1541	57-092
Black	57-093	57-343	—	57-1543	57-094
<b>8-Gauge</b>					
Red	57-240	—	57-2401	—	—
Black	57-250	—	57-2501	—	—
<b>14-Gauge</b>					
Red	57-201	—	57-2011	—	—
Black	57-203	—	57-2031	—	—
White	57-236	—	57-2361	—	—



### Battery Cable Ends

Heavy-duty, gold-plated copper ring terminals are sold in pairs with heat-shrink tubing.

Part No.	Stud Size
<b>2-Gauge</b>	
57-540	5/16"
57-550	3/8"
57-560	1/2"

\* Tin Plated

Part No.	Stud Size
<b>4-Gauge</b>	
57-520	5/16"
57-525	1/4"
57-530	3/8"
57-535	1/2"

Part No.	Stud Size
<b>8-Gauge</b>	
57-510	3/8"
57-515	1/2"
57-570*	1/4"
57-571*	3/8"
57-572*	1/2"





## WIRING ACCESSORIES



### Ring & Spade Terminals

Ideal for custom wiring tasks, ring, and spade terminals are available in a variety of sizes. Terminals are complete with heat-shrink. Sold in pairs.

Part No.	Description	Wire Range (Gauge)	Stud Size	Tab Width
57-450	Ring Terminal (Pair) with Heat-Shrink	#12-10	#6 (.148")	—
57-470	Ring Terminal (Pair) with Heat-Shrink	#12-10	#10 (.200")	—
57-471	Ring Terminal (Pair) with Heat-Shrink	#16-14	#8 (.174")	—
57-472	Ring Terminal (Pair) with Heat-Shrink	#16-14	#10 (.200")	—
57-473	Ring Terminal (Pair) with Heat-Shrink	#16-14	3/8"	—
57-474	Ring Terminal (Pair) with Heat-Shrink	#10-8	3/8"	—
57-475	Ring Terminal (Pair) with Heat-Shrink	#10-8	#10 (.200")	—
57-476	Ring Terminal (Pair) with Heat-Shrink	#22-16	#6 (.148")	—
57-477	Ring Terminal (Pair) with Heat-Shrink	#22-16	#10 (.200")	—
57-478	Ring Terminal (Pair) with Heat-Shrink	#16-14	1/4"	—
57-479	Ring Terminal (Pair) with Heat-Shrink	#16-14	5/16"	—
57-481	Ring Terminal (Pair) with Heat-Shrink	#8	1/4"	—
57-490	Ring Terminal (Pair) with Heat-Shrink	#8	5/16"	—
57-942	Female Spade (Pair) with Heat-Shrink	#16-14	—	.259"
57-943	Male Spade (Pair) with Heat-Shrink	#12-10	—	.250"
57-944	Female Spade (Pair) with Heat-Shrink	#12-10	—	.259"
57-945	Male Spade (Pair) with Heat-Shrink	#16-14	—	.250"



### Impact Crimper 64-020

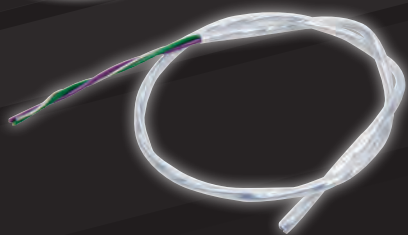
Excellent for crimping standard power rings onto battery cables for permanent termination.



### Labeled Heat-Shrink Kit 50-705

Eight-piece heat-shrink kit not only protects wiring connections from moisture and contaminants but also eases identification when troubleshooting electrical issues. Includes labeled heat-shrink tubes for switch panel, gauge panel, ground, master switch, distributor, tachometer, solenoid, and coil.

**NEW!**



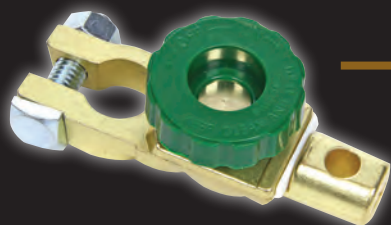
### Shielded Distributor Wire 57-200

Specially shielded, three-wire harness protects the trigger signal from the distributor from EMI (Electro Magnetic Interference). Sold per foot.



### Gator Clamps 50-435

Heavy-duty gator clamps are ideal for repairing or customizing battery charger connectors, remote starters, etc. Sold in pairs, (1) red and (1) black rubber-coated.



### Top-Post Battery Master Disconnect 57-650

Solid brass terminal connects to the negative post for easy installation and quick power disconnection. Simply loosen knob to disconnect power, tighten to reconnect. Rated for 125 amps on standard 12VDC systems.



## WIRING ACCESSORIES

### Weatherpack Terminals

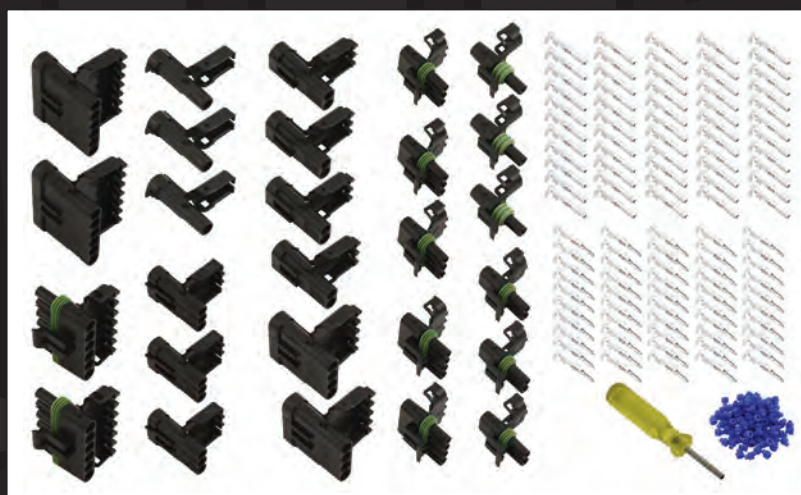
A secure, virtually bulletproof wire termination with a waterproof cable seal for connecting ignition or accessories throughout the race car. One through six pin male and female connectors are available. Rated up to 20A at 12-volts DC. All connectors include pins and seals. Sold individually.

Part No.	Description
50-300	Female Pin
50-301	Male Pin
50-302	Green Cable Seal, 14, 16, 18 AWG Wire
50-303	Blue Cable Seal, 10 AWG Wire
50-304	Red Cable Seal, 20 AWG Wire
50-310	Female Connector, 1-Pin
50-311	Male Connector, 1-Pin
50-312	1-Pin Connector Kit, Male And Female
50-320	Female Connector, 2-Pin
50-321	Male Connector, 2-Pin
50-322	2-Pin Connector Kit, Male And Female
50-330	Female Connector, 3-Pin
50-331	Male Connector, 3-Pin
50-332	3-Pin Connector Kit, Male And Female
50-340	Female Connector, 4-Pin
50-341	Male Connector, 4-Pin
50-342	4-Pin Connector Kit, Male And Female
50-360	Female Connector, 6-Pin
50-361	Male Connector, 6-Pin
50-362	6-Pin Connector Kit, Male And Female



### Weatherpack Kit 50-380

230-piece Weatherpack kit includes a wide variety of connectors, housing cable seals and contact pins. Sold in plastic carrying case.



### MSD Distributor Connector Kit 50-217

Kit includes male and female connectors along with the necessary terminals that are common to MSD distributors.



### Pin Tool Remover 50-399

Required to remove contact pins from Weatherpack housing.





## ELECTRICAL SYSTEM ACCESSORIES



### Ignition/Start Switch With Harness 50-507

Includes a 50-506 ignition switch, along with HEI 50-201 basic wiring harness and 50-501 switch flip cover. Kit is pre-wired, and includes the starter switch and ignition switch, all in one.



### Remote Start Button 50-434

Handy when performing valve lash adjustments. Includes heavy-duty leads with gator clamps that connect to the starter solenoid, allowing the engine to be easily turned over.



### Heavy-Duty Automatic Wire Stripper Pliers 50-393

Heavy-duty, 6" pliers allow quickly stripping 8-18 gauge wires for termination. A bolt-on depth adjustment guide provides consistent, reliable strip length.



### Ratcheting Crimper Pliers 50-395

Perform consistent, professional quality crimps to a wide variety of electrical terminals including insulated, non-insulated, Weatherpack, small gauge, or spark plug wire. Unique design allows quick jaw changes without the need for tools. Rigid, heavy-duty pliers also have an adjustment for crimping pressure.



### Deutsch Connectors

Durable, precision connectors include plastic male and female housing ends with indexed locks to securely lock, sealing out dirt and moisture. Kits are sold complete with terminals, silicone rubber seals, and strong crimp tabs for 12-18 gauge wires.



Part No.	Description
71-322	Deutsch Connector Kit, 2-Pin
71-332	Deutsch Connector Kit, 3-Pin
71-342	Deutsch Connector Kit, 4-Pin
71-362	Deutsch Connector Kit, 6-Pin
71-382	Deutsch Connector Kit, 8-Pin
<b>Flanged Deutsch Receptacles</b>	
71-227	Flanged 2-Pin Deutsch Receptacle
71-347	Flanged 4-Pin Deutsch Receptacle
71-367	Flanged 6-Pin Deutsch Receptacle



## ELECTRICAL SYSTEM ACCESSORIES

### Top-Mount Battery Terminals

Made from solid brass and 24k gold or nickel-plated for optimum conductivity, terminals allow attaching battery cables to top-mount batteries. The 57-620 has two extra ports for accessory wires. Sold in pairs.

Part No.	Description
57-607	Battery Terminal Covers
57-610	Brass/Nickel-Plated Terminals
57-620	Brass/Gold-Plated Terminals
57-627	Battery Terminal Covers
57-630	Brass/Nickel-Plated Bolt-On Terminals 2-or 4-Gauge
57-640	Brass/Nickel-Plated Solder Terminals 4-Gauge



### Remote Jumper Posts

Provides remote access to the battery. Terminals have insulated covers to prevent accidental contact from parts with opposing polarity.

Part No.	Description
57-701	Red
57-702	Black
57-703	Red And Black, Pair



### Charging Posts Mounting Brackets

Charging posts brackets allow 57-703 remote charging posts to be professionally mounted. Machined aluminum brackets are black anodized and offered either flat, for mounting to a flat surface, or bent, for mounting on firewall or inside of trunk. Brackets have two holes to accept red and black remote charging posts. Brackets may also be purchased complete with charging posts.

Part No.	Description
57-708	Flat Mounting Bracket
57-709	Bent Mounting Bracket
57-718	Flat Mounting Bracket with Charging Posts
57-719	Bent Mounting Bracket with Charging Posts



### Side-Mount Battery Terminals

Battery terminals are 24k gold-plated for optimum conductivity. Side-mount terminals allow you to attach cables to GM-style side-mount batteries. Comes with nut and lock washers for 5/16" studs. Long stud allows use of multiple or thick power ring connectors. Sold in pairs.



### Battery Cable Boots

May be used for covering battery terminals on small terminal batteries or starter solenoid connections. Boots may be used with up to 2-gauge cable. Sold as a pair, (1) red and (1) black.



### Pass Through Post

Pass through post allows running electrical wires neatly through firewalls or other metal. Posts have nickel-plated 3/8" studs and a 250 amp max rating.

Part No.	Description
57-803	Red Pass-Through Post
57-804	Black Pass-Through Post





## ELECTRICAL SYSTEM ACCESSORIES



### Terminal Buss Bar

Glass-filled nylon Buss Bar with 12 connection terminals, each able to handle up to 15 amps continuously. 1/4" stainless steel terminal post and (12) #8-32 stainless steel attaching screws.

Part No.	Description
57-801	Red Buss Bar
57-802	Black Buss Bar
57-8012	Red Terminal Buss Bar with Covers
57-8022	Black Terminal Buss Bar with Covers



57-8012



57-8022

### 8-Terminal Power Distribution Post

180 amp maximum with 20 amps per connection max. Glass-filled nylon base with nickel-plated copper connection plate. 5/16" stainless steel connection post and (8) #8-32 stainless steel screws. Available in black or red.

Part No.	Description
57-805	Red Eight-Point Power Post
57-806	Black Eight-Point Power Post



57-806



57-805



### Power Distribution Stud 57-807

Connect two or more voltage cables together. Glass-filled nylon base with 3/8" stud. 160 amps maximum.



55-008/55-009/55-012



55-010/55-011/55-013



55-021/55-022/55-023

### Master Disconnects

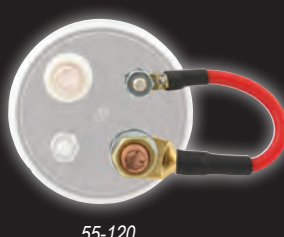
Most sanctioning bodies require these for an emergency cut-off switch. Our master disconnect switches come complete with a red epoxy-coated handle and mounting plate is 2-1/2" x 2-1/2".

Part No.	Description
55-001	Switch Only
55-002	Switch Only, Cars w/ Alternator
55-005	Switch Only for Use with High-Current Alternators
55-006	Replacement Red Handle for 55-030
55-008	Switch With Flag Mounting Plate, Cars with High-Current Alternators
55-009	Switch with Flag Mounting Plate
55-010	Switch with Black Mounting Plate
55-011	Switch with Black Mounting Plate, Cars w/ Alternator
55-012	Switch with Flag Mounting Plate, Cars w/ Alternator
55-013	Switch with Black Mounting Plate, Cars with High-Current Alternators
55-021	Switch with Silver Mounting Plate
55-022	Switch with Silver Mounting Plate, Cars w/ Alternator
55-023	Switch With Silver Mounting Plate, Cars with High-Current Alternators
55-030	Weatherproof Switch with Black Plate, Red Handle, 3-Post
55-031	Weatherproof Switch with Black Plate, Silver Handle, 3-Post
55-55	Replacement Red Switch Handle with Screw
55-120	Jumper Wire, 3" Long Wire for Use with 55-011, 55-012, or 55-022
55-121	Jumper Wire, 3" Long Wire for Use with 55-008, 55-013, or 55-023



Rear

55-005



55-120



55-030



55-031



## ELECTRICAL SYSTEM ACCESSORIES

### Battery Disconnect Boots

Protects battery disconnect terminals from being accidentally shorted.

Part No.	Description
57-601	Red, Pair
57-602	Black, Pair

57-602



### Plastic Master Disconnect Switch w/ Removable Key

55-003

Removable key adds a measure of safety and security, while limiting switch access.

Part No.	Description
55-004	Replacement Key

### Remote Start Button

50-433

Remote-mounted button gives the ability to mount a starter button in the engine compartment to roll the engine over when setting valve lash, without reaching into the cockpit. The wiring is included to hook to the starter solenoid, making installation very simple.



### Stud Feed-Through

Designed for use where a 12-volt power source must pass through a panel (i.e. firewall).

Part No.	Description
57-700	Black
57-800	Red



### Heavy-Duty Starter Solenoid

50-430

Durable solenoid is impervious to dirt, heat, and vibration. Will still function when others fail.



### Starter Jumper Wires

Starter jumper wire is used when a remote solenoid is also being used. Wire jumps power from the solenoid to the starter when starter is engaged. Choose from wires with spade or ring-style terminal ends.

Part No.	Description
50-2001	Spade-Type Jumper Wire, Allstar Performance or Tilton Starters
50-2002	Ring Terminal Jumper Wire, Bert or Brinn Starters



50-2002



50-2001

### Battery Quick Disconnects

The battery cable quick disconnect enables you to change out a battery fast. Also used for battery charging and anywhere a quick disconnect is helpful. Sold individually, complete with required connectors. Three are generally used; (1) for the battery end, (1) for the car end, and (1) for a spare battery or battery charger.

Part No.	Description
57-707	Black Cover for 57-704 Connector
57-705	2 AWG
57-706	4 AWG
57-704	8 AWG
50-513	6-AWG Connector Holster
50-514	6-AWG Connector Pin



57-705

57-706

57-704

57-707

50-513

50-514



# ELECTRICAL SYSTEM ACCESSORIES



## NEW! Remote Battery Charge Kit 57-714

Wiring kit provides eased battery charging, eliminating the need for hood or deck lid removal. Quickly connected or disconnected, kit includes necessary connectors, terminals, and dust cover.



57-711

## Remote Outlet Kits

Remote outlet attaches to the chassis or runs through a body panel, and provides quick, plug-in access for battery chargers or oil pre-heaters. Kits are sold complete with 5' long wiring harness and necessary terminals. Choose from kits with or without outlet cover.



57-723

Part No.	Description
57-711	Remote Outlet for Oil Heater or Battery Charger
57-723	Remote Outlet for Oil Heater or Battery Charger, Includes Female Connector and Outlet Cover



## Alternator Wire Kit with Quick Disconnect 57-105

Universal alternator wire kit includes 9 ft. of 8-gauge wire, ring terminals, boot, and quick disconnects for easy installation/disassembly.



## Alternator Wire Kit 57-106

Universal alternator wire kit includes 9 ft. of 8-gauge wire, ring terminals, and boot.



## Alternator Wiring Kit with Weatherproof Quick Disconnect 57-107

Universal alternator wire kit includes 9 ft. of 8-gauge wire, ring terminals, boot, and waterproof 1-pin Deutsch connectors for easy installation/disassembly.



## Alternator Wire Boot 57-605

Designed to work with 8-gauge wire. Sold individually



## Male Recessed Outlet 57-710

Often used for remote access to battery or oil heater.



57-810



57-820



57-830

## Firewall Grommets

Mounts securely to the firewall and locks onto the wire that passes through the bushing. Provides a waterproof seal and a vibration proof feed-through.

Part No.	Description
57-810	8-12 AWG
57-820	2-4 AWG
57-830	1/0 AWG



## WIRING KITS

QuickCar Racing Products has set the performance racing industry standard for battery cables and wiring. Our fine-stranded wire and cable with copper construction offers the absolute best in current carrying capabilities, while the 220°F + insulation can withstand the high temperatures and fluids common to racing. QuickCar offers a complete line of battery cable kits and wiring accessories that are reliable, durable, and affordable.

### Premium 4-Gauge Wiring Kit 50-232

Premium 4-gauge wiring kit includes the 50-020 ignition control panel, 4-AWG battery cable, wiring harness, 55-009 master disconnect switch, solenoid, top-mount battery terminals, ring terminals, heat-shrink tubing, and wire clamps.



### Premium 4-Gauge Wiring Kit 50-832

With black switch panel/master disconnect.



### 4-Gauge Wiring Kit 50-231

QuickCar's 4-gauge wiring kit is sold with the 50-022 ignition control panel, 4-AWG battery cable, wiring harness, 55-009 master disconnect switch, solenoid, top-mount battery terminals, ring terminals, heat-shrink tubing, and wire clamps.





## WIRING KITS



### 4-Gauge Wiring Kit 50-831

With black switch panel/master disconnect.



### 2-Gauge Wiring Kit 50-230

Heavy-duty, 2-gauge wiring kit includes the 50-053 ignition control panel, 2-AWG battery cable, wiring harness, 55-009 master disconnect switch, solenoid, top-mount battery terminals, ring terminals, heat-shrink tubing and wire clamps.



### 2-Gauge Wiring Kit 50-830

With black switch panel/master disconnect.



## WIRING KITS

### 4-Gauge Wiring Kit 50-235

QuickCar's 4-gauge wiring kit is sold with the 50-102 ignition control panel, 4-AWG battery cable, wiring harness, 55-009 master disconnect switch, solenoid, top-mount battery terminals, ring terminals, heat-shrink tubing, and wire clamps.



### 4-Gauge Wiring Kit 50-835

With black switch panel/  
master disconnect.



### 2-Gauge Wiring Kit Less Master Disconnect 50-234

Heavy-duty, 2-gauge wiring kit includes standard 50-102 switch panel, 50-200 wiring harness, solenoid, top-mount battery terminals, ring terminals, heat-shrink tubing, and wire clamps. Master disconnect sold separately.





## WIRING KITS



### 2-Gauge Wiring Kit Less Master Disconnect 50-834

With black switch panel/  
less master disconnect.



### 4-Gauge Wiring Kit Less Master Disconnect 50-236

Four-gauge wiring kit is sold with standard 50-102 ignition control panel, 4-gauge battery cable, wiring harness, solenoid, top-mount battery terminals, ring terminals, heat-shrink tubing, and wire clamps. Master disconnect sold separately.



### 4-Gauge Wiring Kit Less Master Disconnect 50-836

With black switch panel/less master disconnect.





## TIRE GAUGES

### Tire Pressure Gauges

The QuickCar 2-1/2" diameter tire pressure gauge is regarded as the most reliable in the industry. Offered with a choice of Dry, Glow, or Liquid-Filled face. High-quality gauges feature pressure-relief valves, rubber shock rings, 14" long hoses with strain reliefs on each end and a 45° air chuck.

#### Dry Gauges

Part No.	Description
56-020	0-20 PSI
56-040	0-40 PSI
56-060	0-60 PSI



56-020



56-040



56-060

#### Glow Gauges

Part No.	Description
56-022	0-20 PSI
56-042	0-40 PSI
56-062	0-60 PSI



56-022



56-042



56-062

#### Liquid-Filled Gauges

Part No.	Description
56-021	0-20 PSI
56-041	0-40 PSI
56-061	0-60 PSI



56-021



56-041



56-061

### Economy Digital Tire Pressure Gauge 56-070

Economically-priced digital tire pressure gauge, measures 0-100 PSI in 1/2 lb. increments and uses an auto-off feature for extended battery life. More shock-resistant than analog-style gauges, gauge includes a 14" long hose with 45° air chuck and bleeder for quick pressure adjustments.

### Digital Tire Pressure Gauge 56-085

The most accurate tire pressure gauge currently offered by QuickCar is calibrated to .5% accuracy. Gauge reads in PSI, Bar, KG, or KPA, incorporates an easy-to-read backlit screen, auto shut-off for extended battery life, and a premium, 14" long hose with a 45° angled air chuck. 0-60 lb. gauge.





# TIRE GAUGES



## Tire Inflator

Check tire pressures while inflating or deflating tires. Precision tire inflators include air-release buttons, stainless steel braided air hoses, chrome-plated angle chucks, and choice of Dry, Glow, or Liquid-Filled gauge heads in 0-20 PSI, 0-40 PSI, and 0-60 PSI versions. Digital Tire Inflators are also available incorporating easy-to-read backlit screens, auto shut-off feature for extended battery life.



### Dry Heads

Part No.	Description
56-220	0-20 PSI
56-240	0-40 PSI
56-260	0-60 PSI

### Glow Heads

Part No.	Description
56-222	0-20 PSI
56-242	0-40 PSI
56-262	0-60 PSI

### Liquid-Filled Heads

Part No.	Description
56-221	0-20 PSI
56-241	0-40 PSI
56-261	0-60 PSI

### Digital Heads

Part No.	Description
56-270	0-100 PSI
56-285	0-60 PSI

## Tire Pressure Gauge Replacement Parts

Part No.	Description
56-001	14" Flex Hose With Pressure Relief
56-002	Gauge Head, Dry 0-20 PSI
56-004	Gauge Head, Dry 0-40 PSI
56-006	Gauge Head, Dry 0-60 PSI

Part No.	Description
56-0022	Gauge Head, Glow 0-20 PSI
56-0042	Gauge Head, Glow 0-40 PSI
56-0062	Gauge Head, Glow 0-60 PSI
56-0021	Gauge Head, Liquid-Filled 0-20 PSI

Part No.	Description
56-0041	Gauge Head, Liquid-Filled 0-40 PSI
56-0061	Gauge Head, Liquid-Filled 0-60 PSI
56-003	Rubber Shock Ring

## Angle Style Air Chuck 56-9001

Angle style 45° air chuck fits into hard-to-reach areas, easing tire pressure adjustments. Air chuck has 1/4" NPT threads.



## Ball Style Air Chuck 56-9002

Compact 90° air chuck fits into the tightest, hard-to-reach areas, easing tire pressure adjustments. Air chuck has 1/4" NPT threads.





## CHASSIS COMPONENTS

### Aluminum Suspension Tubes

Manufactured in the USA from rigid 6061 aluminum, QuickCar Suspension Tubes are up to 35% stronger than traditional hex or round units. Suspension tubes include precision-machined ends, corrosion-resistant black anodized finish, and identification on the left-hand threaded end. Unique design allows adjustment by hand or with a wrench. Choose from 21/32" O.D. with 5/16"-24 threads, 8mm-1.25 or 3/8"-24 threads, 1-1/8" O.D. with 5/8"-18 threads, or 1-1/4" O.D. with 3/4"-16 threads.



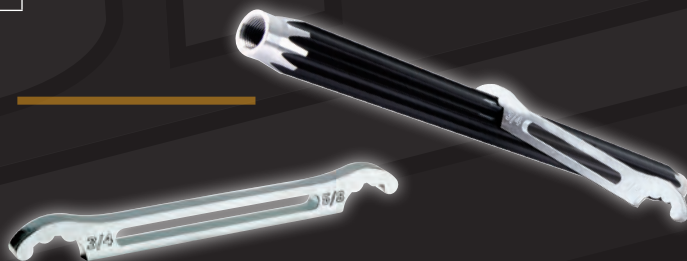
Scan for more  
information



Length	21/32" O.D.	21/32" O.D.	21/32" O.D.	1-1/8" O.D.	1-1/4" O.D.	Length	21/32" O.D.	21/32" O.D.	21/32" O.D.	1-1/8" O.D.	1-1/4" O.D.
	5/16"-24 Thread	8mm-1.25 Thread	3/8"-24 Thread	5/8"-18 Thread	3/4"-16 Thread		5/16"-24 Thread	8mm-1.25 Thread	3/8"-24 Thread	5/8"-18 Thread	3/4"-16 Thread
6"	31-060	—	—	—	—	23.5"	31-235	—	—	62-235	75-235
6.5"	31-065	—	—	—	—	24"	31-240	—	38-240	62-240	75-240
7"	31-070	—	—	62-070	75-070	24.5"	31-245	—	—	62-245	—
7.5"	31-075	—	—	62-075	75-075	25"	31-250	—	38-250	62-250	75-250
8"	31-080	08-080	38-080	62-080	75-080	25.5"	31-255	—	—	—	—
8.5"	31-085	08-085	38-085	62-085	75-085	26"	31-260	—	38-260	—	75-260
9"	31-090	08-090	38-090	62-090	75-090	27"	—	—	38-270	62-270	75-270
9.5"	31-095	08-095	38-095	62-095	75-095	28"	—	—	38-280	62-280	75-280
10"	31-100	08-100	38-100	62-100	75-100	29"	—	—	—	—	75-290
10.5"	31-105	08-105	38-105	62-105	75-105	30"	—	—	—	—	75-300
11"	31-110	08-110	38-110	62-110	75-110	31"	—	—	—	62-310	75-310
11.5"	31-115	08-115	38-115	62-115	75-115	32"	—	—	—	—	75-320
12"	31-120	08-120	38-120	62-120	75-120	33"	—	—	—	—	75-330
12.5"	31-125	08-125	38-125	62-125	75-125	34"	—	—	—	—	75-340
13"	31-130	08-130	38-130	62-130	75-130	35"	—	—	—	—	75-350
13.5"	31-135	08-135	38-135	62-135	75-135	36"	—	—	—	—	75-360
14"	31-140	08-140	38-140	62-140	75-140	37"	—	—	—	—	75-370
14.5"	31-145	08-145	38-145	62-145	75-145	38"	—	—	—	—	75-380
15"	31-150	08-150	38-150	62-150	75-150	39"	—	—	—	62-390	75-390
15.5"	31-155	08-155	38-155	62-155	75-155	40"	—	—	—	62-400	75-400
16"	31-160	08-160	38-160	62-160	75-160	41"	—	—	—	—	75-410
16.5"	31-165	08-165	38-165	62-165	75-165	42"	—	—	—	—	75-420
17"	31-170	08-170	38-170	62-170	75-170	43"	—	—	—	—	75-430
17.5"	31-175	08-175	38-175	62-175	75-175	44"	—	—	—	—	75-440
18"	31-180	08-180	38-180	62-180	75-180	45.7"	—	—	—	62-457	—
18.5"	31-185	08-185	38-185	62-185	75-185	46.5"	—	—	—	62-465	—
19"	31-190	08-190	38-190	62-190	75-190	47.7"	—	—	—	62-477	—
19.5"	31-195	08-195	38-195	62-195	75-195	48"	—	—	—	62-480	—
20"	31-200	08-200	38-200	62-200	75-200	48.7"	—	—	—	62-487	—
20.5"	31-205	—	—	62-205	75-205	49"	—	—	—	62-490	—
21"	31-210	—	38-210	62-210	75-210	50"	—	—	—	62-500	—
22"	31-220	—	38-220	62-220	75-220	51"	—	—	—	62-510	—
22.5"	31-225	—	—	62-225	75-225	72"	—	—	—	62-600	75-600
23"	31-230	—	38-230	62-230	75-230						

### Double-Ended Suspension Tube Wrench 66-6275

Heavy-duty steel, double-ended wrench allows performing quick adjustments to QuickCar 5/8" or 3/4" threaded suspension tubing.



### Suspension Tube Ruler 66-100

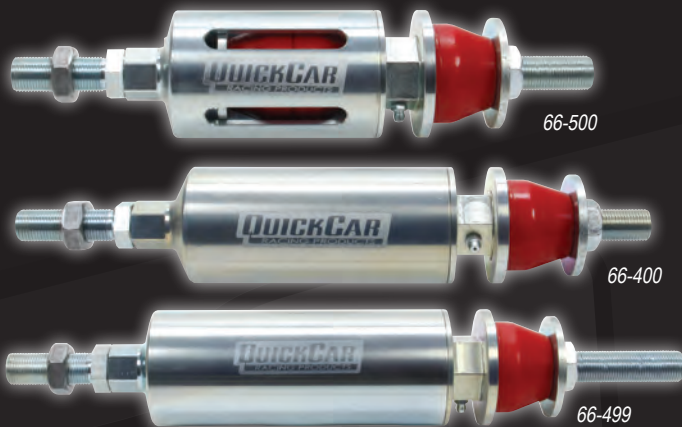
Measure nearly any suspension component fitted with rod ends, including suspension tubes, tie rods, etc., quickly and precisely. Black powder coated ruler includes a locking thumb screw and provides precise measurements up to 36". Sold complete with aluminum adapters to measure components with 1/2", 5/8", or 3/4" rod ends. Optional adapters allow measuring parts with 1/4", 5/16", or 3/8" rod ends.

Part No.	Description
66-105	Ruler Adapters, Allows Measuring Components With 1/4", 5/16", Or 3/8" Rod Ends
66-106	Ruler Adapters, Allows Measuring Components With 1/2", 5/8", Or 3/4" Rod Ends (Included With 66-100)





## CHASSIS COMPONENTS



### Torque Absorbers

Track-proven to increase forward bite out of the turns with sustained traction down the straightaway, QuickCar's torque absorbers are IMCA-legal, and are lighter than spring-style units. CNC-machined units feature an internal brass bushing and grease fittings to eliminate any possibility of bind, while the specially-threaded cap allows easy biscuit changes. Offered in three versions: Standard, uses two interior biscuits and is 13-1/2" long; Intermediate, uses three interior biscuits and is 14-1/2" long; and Long, uses four interior biscuits and is 17" long. Softer or harder durometer biscuits may be purchased separately for tuning purposes.

Part No.	Description
66-500	Standard Torque Absorber, 13-1/2" Long
66-400	Intermediate Torque Absorber, 14-1/2" Long
66-499	Long Torque Absorber, 17" Long

### Torque Absorber Biscuits

QuickCar torque absorber biscuits come in a variety of hardnesses to tune for different track conditions. Biscuits are sold individually, or in the kit 66-508 which includes 2 blue, 2 yellow, 2 red, and 2 black.

Part No.	Description
66-501	Extra Soft Blue Biscuit, Each
66-509	Extra Soft/Soft Green Biscuit, Each
66-502	Soft Yellow Biscuit, Each
66-503	Medium/Soft Orange Biscuit, Each
66-504	Medium Red Biscuit, Each
66-506	Hard Black Biscuit, Each
66-508	KIT Includes Blue (2), Yellow (2), Red (2), Black (2)

### Travel Indicator 66-512

Specialized tool fits QuickCar and other small O.D. torque absorbers, and is used to determine travel of the unit during acceleration and braking. Installs easily. Sold complete with indicator rod, two indicator mounting brackets, and required hardware.

### Torque Absorber Covers

Durable nylon covers keep dirt and debris out of QuickCar torque absorbers, while also preventing prying eyes from viewing biscuit colors and combinations. Covers may be easily installed or removed, and secure with Velcro.

Part No.	Description
66-520	Cover For 66-500, Standard 12-1/2" Long Torque Absorber
66-530	Cover For 66-499, Long 14" Long Torque Absorber

## Steering Wheels

Quality dished aluminum or steel spoked steering wheels are offered with a choice of smooth red, blue, or black grips. Choose from 15" or 17" diameter.

### 15"

Steel		Aluminum	
68-003	Black	68-001	Black
68-0031	Red	68-0011	Red
68-0032	Blue	68-0012	Blue



### 17"

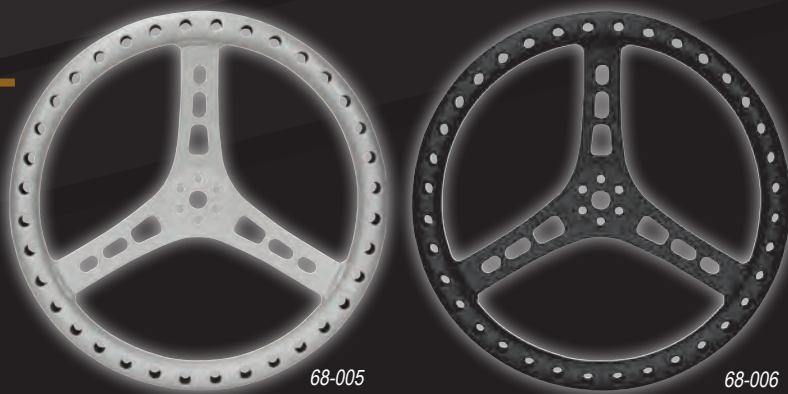
Steel		Aluminum	
68-004	Black	68-002	Black
68-0041	Red	68-0021	Red
		68-0022	Blue



## Lightweight Steering Wheels

Lightweight, 15" diameter aluminum steering wheels are drilled and shot-peened to reduce weight and increase grip. Steering wheels weigh less than 1 lb. and include a 1-1/2" dish. Choose from natural or black powder coated.

Part No.	Description
68-005	Natural Finish Steering Wheel
68-006	Black Finish Steering Wheel





## STEERING WHEEL ACCESSORIES



### Molded Steering Wheel Pad 58-244

Molded black pad fits flat or dished three-spoke steering wheel and secures with Velcro.



### Steering Wheel Pad 58-245

Black vinyl-covered foam pad attaches to most three-spoke racing steering wheels and offers added protection to the driver in the event of a crash. Pad is 5-3/4" diameter x 2" thick and attaches directly with three hook/loop straps.

## Steering Wheel Disconnects

Lightweight, anodized aluminum disconnects allow quick removal or replacement of the steering wheel, often required to allow driver entry or exit. Designed for use with popular 3-bolt steering wheels and 3/4" diameter steering shafts, disconnects are sold complete with weld-on steel hub adapter.



### Hex Hub 360 Degree Aluminum Disconnect 68-012

Comes complete with hardware and fasteners.



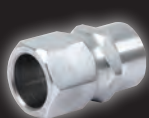
### Hex-Hub Button Style Aluminum Disconnect 68-010

Hex-hub button-style aluminum disconnect.



### Splined Hub 360 Degree Aluminum Disconnect 68-015

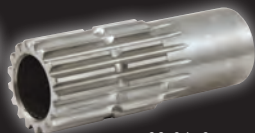
Comes complete with hardware and fasteners.



68-0109



68-0129



68-0159

### Weld-On Hub Steel Adapters

Also available separately, adapters are specifically made for QuickCar disconnects. Welds to 3/4" O.D. steering shaft.

Part No.	Description
68-0109	Fits Hex-Hub Button-Style (68-010)
68-0129	Fits Hex-Hub 360° Style (68-012)
68-0159	Fits Fine Spline-Hub 360° Style (68-015)



## TIRE MANAGEMENT

Tire prep and selection are key to winning races and QuickCar offers a variety of tools to closely monitor them.

### Chrome Valve Stems

Premium chrome valve stems are sold individually or in four packs.

Part No.	Description
56-115	Chrome Valve Stem, Each
56-116	Chrome Valve Stems, Four Pack



### Aluminum Valve Core Tool 56-100

Pocket-sized tool allows quick removal or replacement of valve cores. Tool is manufactured from durable billet aluminum and red anodized finished for corrosion resistance.



### Valve Core Remover 56-119

Compact, convenient tool allows quick valve core replacement and valve stem repair.



### Aluminum Toe Plates 64-704

Simple, yet accurate. Simply lean against each front tire and measure the distance between the two. Includes (2) 12' tape measures.

Part No.	Description
64-703	Replacement Tape Measure



### Tire Marker Kit 64-401

Perfect for marking sizes, circumferences, and locations, kit includes a silver tire pen and white tire marker.

Part No.	Description
64-400	White Tire Marker
64-403	Silver Tire Pen



### Aluminum Tire Caliper 64-706

Lightweight aluminum tire caliper measures circumference quickly and accurately, from 65" to 115".





## TIRE MANAGEMENT



### Tire Management Kit 56-105

All-in-one kit includes deluxe tire durometer (56-155), tire tread depth gauge (56-104), and tire tape (56-110), all in a foam-lined plastic storage case.



### Tire Tread Depth Gauge 56-104

Monitor tire wear and ensure that your complete tire patch has maximum track contact. Durable, aluminum-housed gauge includes professional scale graphics and allows measuring tread depth in 1/32" increments. Sold complete with carrying pouch.



### Deluxe Tire Durometer 56-155

Determine tire hardness effectively and accurately. Gauge has a range of 0-100 and is sold with carrying pouch.



### Digital Tire Tread Depth Gauge 56-102

Determine tread depth quickly and effectively. Precision gauge includes a digital display in decimals or fractions, while the non-rocking, billet aluminum base helps ensure accurate measurements.



### Tire Tape

Hawk tip tire tape grabs onto the edge of virtually any surface, allowing easy measurements by just one person. Tape has a magnetic back and measures up to 10'.

Part No.	Description
56-110	Hawk Tip Tire Tape
56-111	Hawk Tip Tire Tape, Carded
56-112	Hawk Tip Tire Tape, (6) Carded



## CHASSIS SET-UP

### Smart Tool Digital Level 56-163

Ensure that chassis tubing, driveshaft angles, and suspension components are level and plumb. Particularly useful during chassis fabrication. Tool emits an audible beep at level and plumb, and shuts off automatically.

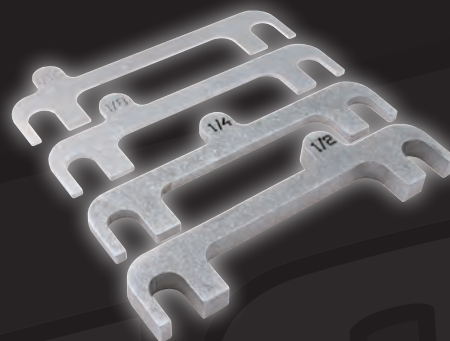


### A-Arm Shim Kit 56-124

Kit includes one each of 1/16", 1/8", 1/4", and 1/2" aluminum upper A-arm shims with 6" centers and installation tabs. Shims are also available separately.

#### Kit Includes

Part No.	Description
56-120	1/16" Shim
56-121	1/8" Shim
56-122	1/4" Shim
56-123	1/2" Shim



### Caster/Camber Gauge

#### Caster/Camber Gauge Kits

Part No.	Description
56-830	Caster/Camber Gauge with Magnetic Adapter
56-831	Caster/Camber Gauge, No Adapter
56-833	Caster/Camber Gauge with Wide 5 Adapter
56-834	Caster/Camber Gauge with Kart Adapter
56-835	Caster/Camber Gauge with GM Adapter
56-836	Caster/Camber Gauge with Small Ford Adapter
56-837	Magnetic Adapter Only
56-838	GM Adapter Only, 3/4"-20
56-843	Small Ford Adapter Only, 3/4"-16
56-844	Wide 5 Adapter Only, 1.813"-16





## CARBURETOR ACCESSORIES



### Throttle Stop Brackets

Offered for popular Holley carburetors, rigid fully CNC-machined black anodized aluminum bracket includes adjustable throttle stop.

Part No.	Description
64-157	For Holley 4bbl.
64-158	For Holley 2bbl.



### Throttle Return Spring Kit 65-096

Includes carb mount bracket, (4) return springs, and required hardware.



### Tall Aluminum Carburetor Nut With O-Ring Seal

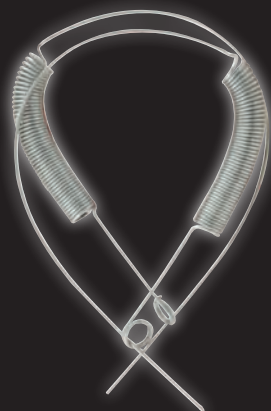
Carb nut includes 5/16" threads. Choose from red anodized or natural finish

Part No.	Description
64-148	Red
64-149	Aluminum



### Aluminum Carburetor Hat 64-146

Durable machined aluminum carb hat protects engine from dirt and debris when air cleaner has been removed.



### Throttle Return Springs 64-169

Includes (2) throttle return springs.



## TIMING SYSTEMS

Timing systems include clipboard, choice of two stop watches, (5) qualifying sheets, and (5) lap chart sheets, and choice of acrylic or aluminum clipboard. QuickCar acrylic or aluminum clipboard timing systems are visually unique, comfortable to hold, and durable.

### Dual Timing Systems

Dual timing systems are complete with (2) Robic SC505 stop watches, acrylic clipboard, (5) qualifying sheets, and (5) lap chart sheets. Choose from systems with red, black, yellow, white, or aluminum clipboards.

Part No.	Description
51-051	Red
51-052	Black
51-053	Yellow
51-054	White
51-070	Aluminum



### Replacement Parts

#### Robic SC505 Stop Watches

The SC505 series includes a 12-lap memory and auto lap counter. Choose from red, black, yellow, or blue.

Part No.	Description
51-037	Red
51-038	Black
51-039	Yellow
51-040	Blue



### Clipboards

Our clipboards are so easy to hold, practical, and attractive that everyone at the track will want one. Choose from acrylic units in red, black, yellow, or white, or a satin aluminum model.

Part No.	Description
51-041	Red Acrylic
51-043	Black Acrylic
51-044	Yellow Acrylic
51-046	White Acrylic
51-048	Aluminum



51-041

51-043

51-044

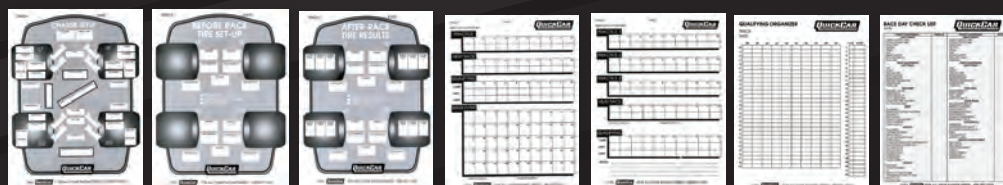
51-046

51-048

### Lap Chart Pads

Lap charts are used to record lap times for practice, heat races, and feature events. Each pad includes 50 sheets.

Part No.	Description
51-201	Chassis Set-Up
51-210	Before Race
51-215	After Race
51-230	50-Lap
51-235	100-Lap
51-236	Qualifying Organizer
51-237	Race Day Check List



51-201

51-210

51-215

51-230

51-235

51-236

51-237



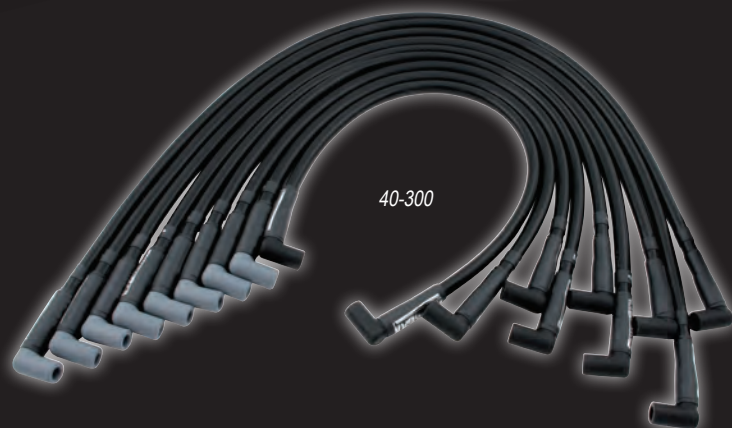
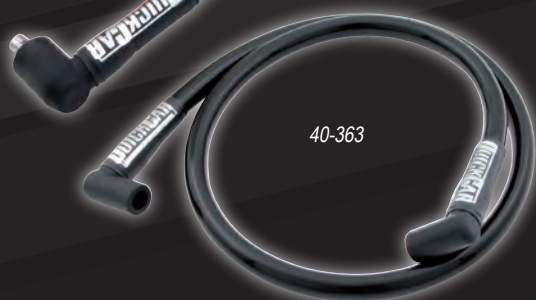
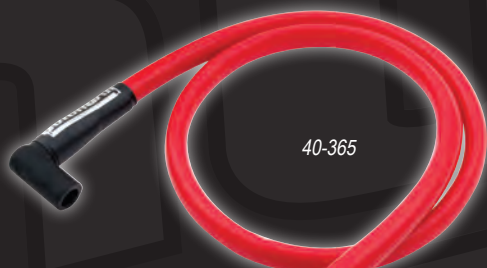
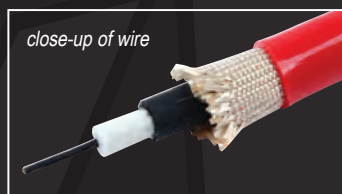
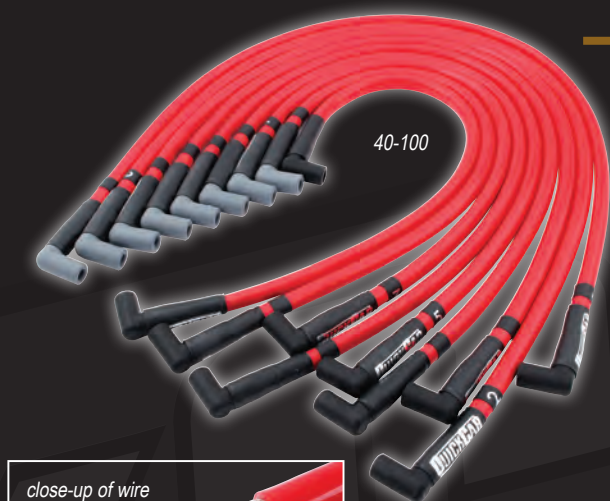
# SPARK PLUG WIRES



## Sleeved Race Spark Plug Wire

Premium-quality spark plug wire offers quick energy transfer, less than 40 ohms/ft. of resistance, and high EMI (Electro Magnetic Interference) and RFI (Radio Frequency Interference) suppression. Flexible, high-strength wire is constructed using a Kevlar core and nickel-copper alloy-wound conductor that is covered with two full layers of silicone, resulting in a 11.5mm O.D., while the impregnated fiberglass insulation provides up to 1,40 °F of heat resistance. High-temperature silicone boots resist temperatures up to 600°F, with posi-snap terminals to provide a secure connection. Cylinder numbers are labeled on both ends. Compatible with most ignition systems.

Part No.	Description
40-100	SB Chevy Wire Set, Red, 24" Coil Wire
40-300	SB Chevy Wire Set, Black, 24" Coil Wire
40-150	SB Chevy Wire Set, Red, Without Coil Wire
40-350	SB Chevy Wire Set, Black, Without Coil Wire
40-121	Red Coil Wire, 12" HEI/HEI
40-123	Black Coil Wire, 12" HEI/HEI
40-125	Red Coil Wire, 12" HEI/Socket
40-127	Black Coil Wire, 12" HEI/Socket
40-181	Red Coil Wire, 18" HEI/HEI
40-183	Black Coil Wire, 18" HEI/HEI
40-185	Red Coil Wire, 18" HEI/Socket
40-187	Black Coil Wire, 18" HEI/Socket
40-241	Red Coil Wire, 24" HEI/HEI
40-243	Black Coil Wire, 24" HEI/HEI
40-245	Red Coil Wire, 24" HEI/Socket
40-247	Black Coil Wire, 24" HEI/Socket
40-361	Red Coil Wire, 36" HEI/HEI
40-363	Black Coil Wire, 36" HEI/HEI
40-365	Red Coil Wire, 36" HEI/Socket
40-367	Black Coil Wire, 36" HEI/Socket
40-421	Red Coil Wire, 42" HEI/HEI
40-423	Black Coil Wire, 42" HEI/HEI
40-425	Red Coil Wire, 42" HEI/Socket
40-427	Black Coil Wire, 42" HEI/Socket
40-481	Red Coil Wire, 48" HEI/HEI
40-483	Black Coil Wire, 48" HEI/HEI
40-485	Red Coil Wire, 48" HEI/Socket
40-487	Black Coil Wire, 48" HEI/Socket
40-601	Red Coil Wire, 60" HEI/HEI
40-603	Black Coil Wire, 60" HEI/HEI
40-605	Red Coil Wire, 60" HEI/Socket
40-607	Black Coil Wire, 60" HEI/Socket





## BRAKE SYSTEM ACCESSORIES

### Brake Bias Gauge Panels

Brake bias gauge panels are fitted with two 1-1/2" diameter, liquid-filled pressure gauges that read from 1-1,500 PSI, allowing driver to track pressure at both the front and rear calipers. Panels include bleeders to evacuate air from the system.

### Vertical Mini Brake Bias Gauge 61-101

Vertical design panel is 2-3/4" wide x 4-1/2" high.



### Horizontal Mini Brake Bias Gauge 61-103

Horizontal design panel is 4-1/2" wide x 2-3/4" high.



### Vertical Mini Brake Bias Gauge 61-105

Vertical design panel is 2-3/4" wide x 4-1/2" high. Black.



Replacement Gauge 611-90



### Brake Bleeder Bottle 66-700

Eliminates messy brake bleeding. Bleeder bottle has a high-grade surgical hose for a secure seal on bleeders and includes an extra nipple to put your hose on once bleeding is complete. Steel lanyard allows hanging bottle on chassis during bleeding process.



### Brake Caliper Pressure Test Kits

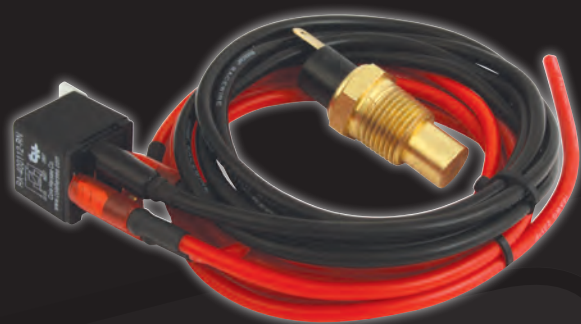
Brake system troubleshooting tool allows checking brake pressure at the caliper, quickly and accurately. Each kit is packed in a neat, foam-lined case.

Part No.	Description
64-510	Threads are 1/4"-28 tapered, Most Aftermarket Calipers
64-511	10mm-1.50, GM Metric Calipers





## COOLING SYSTEM ACCESSORIES



### Electric Fan Relay Kit 60-039

Kit includes 40-amp relay, water temperature switch, and wiring harness.



### 200° Temperature Switch 60-040

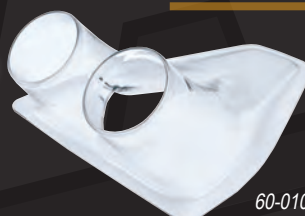
Single-wire water temperature switch is preset to turn on at 200°F. Sender has 1/2"NPT threads.



60-000



60-003



60-010

### NACA Ducts

Designed specifically for ducting air into the car, providing air flow to cool the driver, brakes, rear end cooler, etc. Ducts may be mounted to virtually any flat surface and accept a 3" diameter hose.

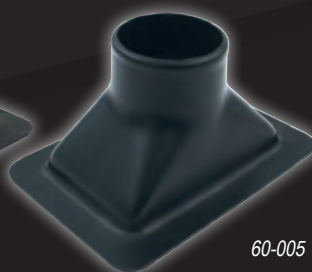
Part No.	Description
60-000	Single Clear
60-003	Single Black
60-010	Dual Clear



60-008



60-009



60-005

### Bumper Ducts

Bumper ducts direct air flow to the brakes, preventing overheating and prolonging brake life. Durable and easy to install.

Part No.	Description
60-008	Single
60-009	Dual
60-005	Headlight Duct



60-020



60-030

### NACA Duct Hose

Wire-reinforced 3" diameter duct hose will not collapse and is used to deliver continuous air flow to high-temperature areas.

Part No.	Description
60-020	Neoprene Hose for Standard Temperatures, 10' Long
60-030	Silicone Hose for Extreme Temperatures, 11' Long



## TOOLS

### Aluminum 6-Pump Pit Jack

64-087

Lightweight, high-quality aluminum 6-pump jack features a 3,000 lb. capacity. Low-profile jack rolls under the lowest slung race chassis, with a maximum lifting height of 17-1/2".



### Dirt Wing

64-088

Provides a sturdy platform when using the 64-087 pit jack on soft or uneven surfaces.



### Oil Filter Cutter

64-730

Quickly open oil filters to check for potential engine problems. Heavy-duty billet aluminum tool features a razor-sharp, hardened cutter for an extended life.



### Pit Sockets

The same steel 1/2" drive sockets used by many top racing teams.

Part No.	Description
64-076	1" Socket, 3-1/4" Long
64-077	Pro 1" Socket, 3-1/4" Long
64-078	Pro 1" Socket, 2-1/4" Long



### Cleco Fasteners

Pin-style fasteners provide quick, easy installation of sheet metal during initial fitting. May be used with material up to 1/8" thick.

Part No.	Description
64-175	1/8" Clecos, 25 Pack
64-176	3/16" Clecos, 25 Pack



### Cleco Pliers

64-180

Specialized tool is used to install or remove Cleco fasteners.



### Ratcheting Crimper Pliers

50-395

Crimps a wide variety of electrical terminals including insulated, non-insulated, Weatherpack, small gauge, or spark plug wire. Unique design allows quick jaw changes without the need for tools. Rigid, heavy-duty pliers also have an adjustment for crimping pressure.



### Weatherpack Terminal Tool

50-399

Tool is used to remove male and female pin terminals from Weatherpack connectors.



### Valve Core Tool

56-100

Convenient, pocket-sized tool allows quick removal and replacement of valve cores. Tool is manufactured from durable billet aluminum with a red anodized finish for corrosion resistance.





## TOOLS



### Heavy-Duty Automatic Wire Stripper Pliers

**50-393**

Heavy-duty 6" pliers quickly strip 8-18 gauge wires for termination. A bolt-on depth-adjustment guide provides consistent, reliable strip length.



### Impact Crimper

**64-020**

Tool is designed for crimping standard power rings onto battery cables for a permanent termination.



56-110

### Tire Tape

Hawk tip design securely grabs onto virtually any surface and won't pull loose. Includes a magnetic back and measures up to 10'.

Part No.	Description
56-110	Tire Tape
56-111	Tire Tape, Carded
56-112	Hawk Tip Tire Tape, (6) Carded



### Safety Wire

**64-015**

Includes 1 lb. of .032" diameter safety wire.



### Ride Height Gauge Checker

**56-108**

Back by popular demand. Place the pocket-sized ride height gauge under the frame and press the button; an etched stem pops out to show the ride height. Measures ride heights from 3-1/2" to 6".



### Safety Wire Pliers

**64-010**

Rugged pliers include an end bearing for smoother, faster twisting, particularly in tight areas where a second pull is needed.



### AN Aluminum Angle Head Wrench Set

**64-709**

Aluminum AN wrenches feature an angle head design for improved fitting access. Five-piece set includes -6AN, -8AN, -10AN, -12AN, and -16AN.



### AN Aluminum Wrench Set

**64-708**

Five-piece aluminum wrench set includes -6AN, -8AN, -10AN, -12AN, and -16AN.



## SAFETY EQUIPMENT

### Roll Bar Padding

Closed-cell foam progressively absorbs shock and increases density as it is compressed. Offset inside diameter allows installing thicker padding toward driver for added protection. Sold in 3' lengths.

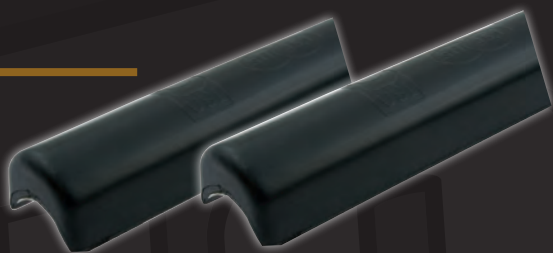
Part No.	Description
58-231	Red
58-221	Red, Case of 12
58-232	Blue
58-222	Blue, Case of 12
58-233	Black
58-223	Black, Case of 12
58-234	Yellow
58-224	Yellow, Case of 12
58-235	Orange
58-225	Orange, Case of 12



### SFI-Approved Roll Bar Padding

Fire-resistant roll bar padding meets SFI 45.1 specifications, won't melt in the event of a fire, and offers 180° coverage to roll bar tubing. Sold in 3' lengths. Offered in black only.

Part No.	Description
58-211	1-5/8" to 2" O.D. Roll Bar Padding
58-212	1-1/4" to 1-3/4" O.D. Roll Bar Padding



### Nylon Wire Ties

Secure roll bar padding, electrical wiring, gauge lines, etc. Heavy-duty, 14" long wire ties are sold in bags of 100.

Part No.	Description
58-237	Black
58-238	Red
58-239	Blue
58-240	Yellow



### Premium Black Cable Ties

#### 58-250

Black 15" long cable ties are made from weather-resistant nylon and include metal locking barbs in head to provide a reliable locking force. Domed-top ties include smooth edges and a high-strength, low-thread force. Sold in packs of 50.



### Carburetor Box

#### 64-140

Protect expensive carburetors from dirt and debris. Ideal for storage or transport, container accepts popular Holley 4150/4160 4bbl. carburetors and includes a locking lid.







## Helmet Hook

Lightweight anodized aluminum hooks clamp directly to roll bar, and provides an anchor for helmet strap.

Part No.	Description
66-920	1-3/4" Tube Mount
66-936	1-1/2" Tube Mount



## Aluminum Coil Clamp 66-925

Anodized aluminum bracket allows mounting of ignition coil directly to firewall



## Vent Clamps

Clamp-on breather, ideal for use with transmissions, rear ends, etc. clamps directly to chassis tubing.

Part No.	Description
66-937	1-3/4"
66-938	1-1/2"
66-9381	Replacement Element

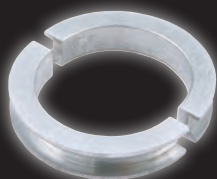


66-754

## Convex Mirrors

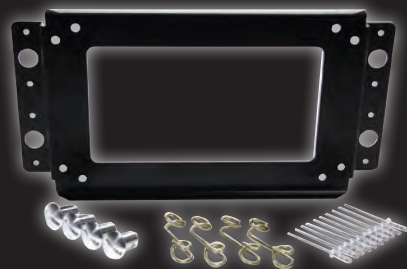
Special convex mirrors provide a wide rear view of the competition. Choose from 14" or 17" wide mirrors.

Part No.	Description
66-754	14" Wide Mirror Only
66-757	17" Wide Mirror Only



## Roll Bar Clamp Reducer 66-908

Lightweight aluminum reducer is used to adapt existing radio boxes, drink bottle holders, etc. from 1-3/4" to 1-1/2" diameter tubing.



## MSD Box Quick Release 50-442

Raised platform mounting plate accepts popular MSD 6000-series ignition and may be mounted to any flat surface. Sold complete with quick fasteners to allow fast ignition unit changes in the event of a failure.

<b>A</b>		<b>E Cont.</b>		<b>M Cont.</b>		<b>T Cont.</b>	
A-Arm Shim Kit .....	76	Electrical Wire .....	56	Mirror .....	85	Timing Systems .....	78
Air Ducts .....	81	Terminals .....	56-59	MSD Box Quick Release .....	85	Tire .....	
Alternator Wire Boot .....	63	Stripper .....	59, 83	MSD Distributor Connector .....	3, 58	Caliper .....	74
Aluminum Jack .....	82	Extreme .....		<b>N</b>		Chucks .....	69
Dirt Wing .....	82	Gauge/Panel .....	14-19, 35	NACA Duct .....	81	Durometer .....	75
AN Wrenches .....	83	LED Digital Tachometer .....	26-27	Nylon Ties .....	84	Gauges .....	68-69
<b>B</b>		<b>F</b>		<b>O</b>		Tire Cont. ....	
Battery Cable .....	56	Fan Relay Kit .....	81	Oil Filter Cutter .....	82	Replacement Parts .....	69
Crimper .....	57, 83	Firewall .....		Oil Temperature Manifold .....	31	Inflators .....	69
Ends .....	56	Grommet .....	54, 63	<b>P</b>		Management Kit .....	75
Ground .....	56	Sensor Junction .....	4	Pilot Light .....	50	Markers .....	74
Kits .....	56	Fittings, AN/NPT .....	29, 31, 35	Pit Jack .....	82	Tape .....	75, 83
Quick Disconnect .....	62	Fuel Pressure Isolator .....	30	Pit Socket .....	82	Toe Plates .....	74
Stud Feed-Thru .....	60	Fuses .....	50	Power Distribution Post .....	61	Toggle Switch .....	50-51
Terminals .....	60	Fuse Holder .....	50	Pressure Line Kit .....	1, 17, 31	Aircraft Cover .....	50
Battery Charging Posts .....	60	<b>G</b>		<b>Q</b>		Boot .....	50
Mounting Bracket .....	60	Gator Clamp .....	57	Qualifying Organizer .....	78	Extension .....	41
Battery Disconnect .....	57, 61	Gauges .....		Quick Release, Steering .....	73	Tools .....	
Boots .....	60, 62	Alignment .....	76	<b>R</b>		AN Wrenches .....	83
Distribution Block .....	61	Brake Bias .....	28, 80	Race Wire .....	56	Crimper Pliers .....	59, 82
Jumper Wire .....	62	Digital Panel .....	10-13	Rear View Mirror .....	85	Impact Crimper .....	57, 83
Brake .....		Extreme Panel .....	1, 14-19	Remote Battery Charge Kit .....	3, 63	Oil Filter Cutter .....	82
Bias Gauges/Panels .....	28, 80	Mini .....	31	Remote Electrical Outlets .....	63	Pit Sockets .....	82
Bleeder Bottle .....	80	Open Wheel Panel .....	34-37	Remote Start Button .....	59, 62	Safety Wire Pliers .....	83
Caliper Pressure Kit .....	80	Redline Panel .....	4-9	Replacement Gauges .....		Valve Core Tool .....	74, 82
Brake/Bumper Duct .....	81	Replacement .....	5, 11, 17, 21	Digital .....	11	Weatherpack .....	58, 82
Hose .....	81	Standard Panel .....	20-25	Extreme .....	17	Wire Strippers .....	59, 83
Buss Bar .....	61	Sprint .....	1, 34-37	Redline .....	5	Wrenches, AN .....	83
<b>C</b>		Tire .....	68-69	Sprint .....	34-37	Torque Absorbers .....	71
Cable Tie .....	84	Wraparound Panel .....	33	Standard .....	21	Biscuits .....	71
Carburetor .....		Grommets .....	37, 54, 63	Resettable Circuit Breaker .....	48, 51	Covers .....	71
Box .....	84	Ground Cables .....	56	Ride Height Gauge .....	83	Travel Indicator .....	71
Hat .....	77	<b>H</b>		Roll Bar Padding .....	84	Tread Depth Gauge .....	75
Nut .....	77	Heat Shrink .....	3, 57	Roll Bar Clamp Reducer .....	85	<b>U</b>	
Return Spring .....	77	Helmet Hook .....	85	<b>S</b>		Under-Car Light Kit .....	55
Throttle Stop .....	77	Hose Adapter .....	30	Safety Wire .....	83	<b>V</b>	
Caster/Camber Gauge .....	76	Hub Adapter .....	76	Pliers .....	83	Valve Stems .....	74
Adapters .....	76	Hydraulic Jack .....	82	Senders, Pressure/Temperature .....		Core Remover .....	74, 82
Charging Posts .....	60	<b>I</b>		Electric .....	5, 11, 28, 31, 36-37	Vent Clamps .....	85
Mounting Bracket .....	60	Ignition Box Mounting Plate .....	85	Smart Tool .....	76	<b>W</b>	
Chassis Height Gauge .....	83	Ignition Control Panel .....	38-48	Spark Plug Wire Sets .....	79	Warning Lights .....	30
Check Lists .....	78	Mounting Bracket .....	43	Starter Solenoid .....	62	Kits .....	30, 32, 35
Circuit Breaker .....	48, 51	Wiring Harness .....	40, 49, 52, 53	Jumper Wires .....	62	Water Pressure Gauge .....	5, 32, 11, 17
Clear Boot .....	48	Ignition Switch .....	50-51	Steering Wheel .....	72	Weatherpack Connectors .....	58
Clamps, Gator .....	57	Switch Boot .....	50	Disconnect .....	73	Crimper .....	58, 82
Clamps, Line .....	2, 50	Start Switch .....	50, 51	Pads .....	73	Kit .....	58
Cleco Fastener .....	82	Start Switch w/Harness .....	59	Sticker Kits .....	42, 45	Removal Tool .....	58, 82
Pliers .....	82	Switch Extensions .....	41	Stop Watch .....	78	Weatherproof Switch .....	51
Clipboard .....	78	Ignition Wiring Adapter .....	2, 54, 55	Stud Feed-Through .....	60, 62	Wire, Electrical .....	56
Coil, Ignition .....		Impact Crimper .....	57, 83	Suspension Tubes .....	70	Wiring Harnesses .....	2, 37, 49, 52-55
Clamp .....	85	<b>J</b>		Ruler .....	70	Wiring Kits .....	64-67
Wire .....	79	Jack, Hydraulic .....	82	Wrench .....	70	Wraparound Panels .....	33
Control Arm Shim Kit .....	76	Dirt Wing .....	82	Switches .....		Wrenches .....	
<b>D</b>		<b>L</b>		Pressure .....	17, 20, 29	AN .....	83
Deutsch Connector .....	3, 54, 59,	Lap Timer .....	28	Rocker .....	47	Suspension Tube .....	70
Dirt Wing .....	82	LED Light/Bulb .....	30, 32	Temperature .....	17, 20, 29, 81	<b>Z</b>	
Disconnect, Master .....	57	Strips .....	29, 55	Toggle .....	50, 51	Zip Ties .....	84
Distributor Adapter .....	54	Lights, Warning .....	30	<b>T</b>			
Distributor Wire .....	57	Line Clamp .....	2, 50	Tachometers .....	1, 26-28		
<b>E</b>		<b>M</b>		Tape Measure .....	75, 83		
Electric Fan Relay Kit .....	81	Manifold, Oil Temperature .....	31	Temperature Adapters .....	29, 31, 35		
Electric Fan Harness .....	2, 55	Master Disconnect .....	57, 61, 62	Terminals, Electrical .....	3, 56-59,		
Electronic Pressure Sender Adapter .....	1, 31	Boots .....	60, 62	Three-Wheel Brake Panel .....	54		
Electrical Outlet .....	63	Jumper Wire .....	61-62	Throttle Return Springs .....	77		
				Throttle Stop .....	77		



# PART NUMBER / PAGE INDEX



08-080.....70	38-115.....70	50-103.....38, 49	50-433.....62	50-905.....50	56-002.....69	57-101.....56
08-085.....70	38-120.....70	50-163.....42, 49	50-434.....59	50-910.....50	56-0021.....69	57-102.....56
08-090.....70	38-125.....70	50-164.....42, 49	50-435.....57	50-915.....50	56-0022.....69	57-103.....56
08-095.....70	38-130.....70	50-165.....42, 49	50-442.....85	50-920.....50	56-003.....69	57-104.....56
08-100.....70	38-135.....70	50-166.....42, 49	50-500.....50	50-925.....50	56-004.....69	57-105.....63
08-105.....70	38-140.....70	50-1711.....44, 49	50-501.....50	50-930.....50	56-0041.....69	57-106.....63
08-110.....70	38-145.....70	50-1713.....44, 49	50-503.....50	50-955.....50	56-0042.....69	57-107.....63
08-115.....70	38-150.....70	50-1714.....44, 49	50-504.....50	50-960.....50	56-006.....69	57-1521.....56
08-120.....70	38-155.....70	50-1731.....44	50-505.....50	50-9715.....48	56-0061.....69	57-1523.....56
08-125.....70	38-160.....70	50-200.....40, 49, 52	50-506.....50	50-9720.....48	56-0062.....69	57-1541.....56
08-130.....70	38-165.....70	50-2001.....62	50-507.....59	50-9725.....48	56-020.....68	57-1543.....56
08-135.....70	38-170.....70	50-2002.....62	50-508.....50	50-9730.....48	56-021.....68	57-1809.....56
08-140.....70	38-175.....70	50-2005.....2, 54	50-510.....50	51-037.....78	56-022.....68	57-1810.....56
08-145.....70	38-180.....70	50-2006.....55	50-512.....50	51-038.....78	56-040.....68	57-200.....57
08-150.....70	38-185.....70	50-2007.....54	50-513.....62	51-039.....78	56-041.....68	57-201.....56
08-155.....70	38-190.....70	50-2008.....54	50-514.....62	51-040.....78	56-042.....68	57-2011.....56
08-160.....70	38-195.....70	50-2009.....54	50-520.....51	51-041.....78	56-060.....68	57-203.....56
08-165.....70	38-200.....70	50-201.....40, 49, 52	50-522.....51	51-043.....78	56-061.....68	57-2031.....56
08-170.....70	38-210.....70	50-2010.....2, 55	50-524.....41	51-044.....78	56-062.....68	57-236.....56
08-175.....70	38-220.....70	50-2017.....3	50-526.....41	51-046.....78	56-070.....68	57-2361.....56
08-180.....70	38-230.....70	50-2021.....49, 52	50-601.....50	51-048.....78	56-085.....68	57-240.....56
08-185.....70	38-240.....70	50-2030.....52	50-602.....50	51-051.....78	56-100.....74, 82	57-2401.....56
08-190.....70	38-250.....70	50-2031.....49, 52	50-604.....50	51-052.....78	56-102.....75	57-250.....56
08-195.....70	38-260.....70	50-2032.....53	50-609.....50	51-053.....78	56-104.....75	57-2501.....56
08-200.....70	38-270.....70	50-2033.....52	50-610.....50	51-054.....78	56-105.....75	57-321.....56
31-060.....70	38-280.....70	50-2034.....49, 53	50-700.....48	51-070.....78	56-108.....83	57-323.....56
31-065.....70	40-100.....79	50-2035.....53	50-705.....3, 57	51-201.....78	56-110.....75, 83	57-341.....56
31-070.....70	40-121.....79	50-2037.....52	50-711.....44, 49	51-210.....78	56-111.....75, 83	57-343.....56
31-075.....70	40-123.....79	50-2039.....53	50-7164.....45, 49	51-215.....78	56-112.....75, 83	57-450.....57
31-080.....70	40-125.....79	50-2051.....53	50-718.....45	51-230.....78	56-115.....74	57-470.....57
31-085.....70	40-127.....79	50-2053.....53	50-719.....45	51-235.....78	56-116.....74	57-471.....57
31-090.....70	40-150.....79	50-206.....55	50-720.....44, 49	51-236.....78	56-119.....74	57-472.....57
31-095.....70	40-181.....79	50-207.....54	50-7220.....2, 37	51-237.....78	56-120.....76	57-473.....57
31-100.....70	40-183.....79	50-217.....58	50-7222.....55	52-163.....46	56-121.....76	57-474.....57
31-105.....70	40-185.....79	50-230.....65	50-731.....44, 49	52-164.....47	56-122.....76	57-475.....57
31-110.....70	40-187.....79	50-231.....64	50-740.....44, 49	52-165.....46	56-123.....76	57-476.....57
31-115.....70	40-241.....79	50-232.....64	50-7411.....44, 49	52-166.....46	56-124.....76	57-477.....57
31-120.....70	40-243.....79	50-234.....66	50-7414.....44, 49	52-500.....47	56-155.....75	57-478.....57
31-125.....70	40-245.....79	50-235.....66	50-7431.....44, 49	52-510.....47	56-163.....76	57-479.....57
31-130.....70	40-247.....79	50-236.....67	50-750.....44, 49	52-512.....47	56-220.....69	57-481.....57
31-135.....70	40-300.....79	50-300.....58	50-7531.....44, 49	52-601.....47	56-221.....69	57-490.....57
31-140.....70	40-350.....79	50-301.....58	50-7611.....45, 49	52-602.....47	56-222.....69	57-510.....56
31-145.....70	40-361.....79	50-302.....58	50-7614.....45, 49	52-604.....47	56-240.....69	57-515.....3, 56
31-150.....70	40-363.....79	50-303.....58	50-7631.....45, 49	52-609.....47	56-241.....69	57-520.....56
31-155.....70	40-365.....79	50-304.....58	50-7711.....44, 49	52-615.....47	56-242.....69	57-525.....56
31-160.....70	40-367.....79	50-310.....58	50-7713.....44, 49	52-716.....47	56-260.....69	57-530.....56
31-165.....70	40-421.....79	50-311.....58	50-7714.....44, 49	52-717.....47	56-261.....69	57-535.....56
31-170.....70	40-423.....79	50-312.....58	50-7731.....44, 49	52-863.....46	56-262.....69	57-540.....56
31-175.....70	40-425.....79	50-320.....58	50-7739.....44, 49	52-864.....47	56-270.....69	57-550.....56
31-180.....70	40-427.....79	50-321.....58	50-790.....45, 49	52-865.....46	56-285.....69	57-560.....56
31-185.....70	40-481.....79	50-322.....58	50-7911.....45, 49	52-866.....46	56-830.....76	57-570.....3, 56
31-190.....70	40-483.....79	50-330.....58	50-7931.....45, 49	55-001.....61	56-831.....76	57-571.....56
31-195.....70	40-485.....79	50-331.....58	50-802.....39, 49	55-002.....61	56-833.....76	57-572.....56
31-200.....70	40-487.....79	50-332.....58	50-803.....39, 49	55-003.....62	56-834.....76	57-601.....62
31-205.....70	40-601.....79	50-340.....58	50-820.....39, 49	55-004.....62	56-835.....76	57-602.....62
31-210.....70	40-603.....79	50-341.....58	50-822.....41, 49	55-005.....61	56-836.....76	57-604.....60
31-220.....70	40-605.....79	50-342.....58	50-823.....41, 49	55-006.....61	56-837.....76	57-605.....63
31-225.....70	40-607.....79	50-360.....58	50-825.....41, 49	55-008.....61	56-838.....76	57-607.....60
31-230.....70	50-003.....42	50-361.....58	50-830.....65	55-009.....61	56-843.....76	57-610.....60
31-235.....70	50-004.....45	50-362.....58	50-831.....65	55-010.....61	56-844.....76	57-620.....60
31-240.....70	50-008.....54	50-380.....58	50-832.....64	55-011.....61	56-9001.....69	57-627.....60
31-245.....70	50-020.....38, 49	50-393.....59, 83	50-834.....67	55-012.....61	56-9002.....69	57-630.....60
31-250.....70	50-022.....40, 49	50-395.....59, 82	50-835.....66	55-013.....61	57-008.....56	57-640.....60
31-255.....70	50-023.....40, 49	50-399.....58, 82	50-836.....67	55-021.....61	57-009.....56	57-650.....57
31-260.....70	50-025.....40, 49	50-400.....51	50-852.....39, 49	55-022.....61	57-010.....56	57-660.....60
38-080.....70	50-031.....45, 49	50-401.....51	50-853.....39, 49	55-023.....61	57-011.....56	57-700.....62
38-085.....70	50-033.....45, 49	50-402.....51	50-863.....43, 49	55-030.....61	57-012.....56	57-701.....60
38-090.....70	50-034.....54	50-410.....51	50-864.....43, 49	55-031.....61	57-014.....56	57-702.....60
38-095.....70	50-035.....54	50-415.....51	50-865.....43, 49	55-120.....61	57-091.....56	57-703.....60
38-100.....70	50-052.....49	50-417.....51	50-866.....43, 49	55-121.....61	57-092.....56	57-704.....62
38-105.....70	50-053.....49	50-420.....51	50-868.....48, 49	55-55.....61	57-093.....56	57-705.....62
38-110.....70	50-102.....38, 49	50-430.....62	50-869.....48, 49	56-001.....69	57-094.....56	57-706.....62



## PART NUMBER / PAGE INDEX

57-707.....62	611-6008.....32	61-704.....30	62-135.....70	64-176.....82	67-015.....28	69-4057.....7
57-708.....60	611-6009.....21	61-7041.....16	62-140.....70	64-180.....82	67-101.....28	69-4251.....9
57-709.....60	611-6204.....35	61-7042.....16	62-145.....70	64-400.....74	67-107.....28	69-4256.....9
57-710.....63	611-6205.....35	61-7051.....17	62-150.....70	64-401.....74	67-2001.....10	69-4257.....9
57-711.....63	611-7000.....17	61-7056.....1, 15	62-155.....70	64-403.....74	67-2004.....36	69-5036.....5
57-714.....3, 63	611-7003.....17	61-706.....30	62-160.....70	64-510.....80	67-2005.....36	69-5037.....5
57-718.....60	611-7006.....17	61-709.....30	62-165.....70	64-511.....80	67-2031.....12	71-227.....3, 39
57-719.....60	611-7007.....17	61-710.....31	62-170.....70	64-703.....74	67-3011.....10	71-247.....3
57-723.....63	611-7008.....17	61-7101.....31	62-175.....70	64-704.....74	67-3012.....10	71-267.....3
57-800.....62	611-7009.....17	61-71012.....17, 31	62-180.....70	64-706.....74	67-3016.....10	71-322.....59
57-801.....61	611-7010.....17, 26	61-71024.....17, 31	62-185.....70	64-708.....83	67-3017.....10	71-332.....59
57-8012.....61	611-900.....29	61-71036.....17, 31	62-190.....70	64-709.....83	67-3041.....12	71-342.....59
57-802.....61	611-901.....29	61-71048.....17, 31	62-195.....70	64-730.....82	67-3042.....12	71-347.....59
57-8022.....61	611-90100.....31	61-71060.....17, 31	62-200.....70	65-096.....77	67-3046.....12	71-362.....59
57-803.....60	611-9015.....31	61-711.....32	62-205.....70	66-100.....70	67-3047.....13	71-367.....59
57-804.....60	611-902.....29	61-712.....32	62-210.....70	66-105.....70	67-4021.....10	71-382.....3, 59
57-805.....61	611-903.....29, 35	61-713.....32	62-220.....70	66-106.....70	67-4026.....11	75-070.....70
57-806.....61	611-904.....29	61-714.....32	62-225.....70	66-400.....71	67-4027.....11	75-075.....70
57-807.....61	611-905.....29	61-716.....32	62-230.....70	66-499.....71	67-4051.....13	75-080.....70
57-810.....63	61-2204.....35	61-717.....35	62-235.....70	66-500.....71	67-4056.....13	75-085.....70
57-820.....63	61-2205.....35	61-718.....35	62-240.....70	66-501.....71	67-4057.....13	75-090.....70
57-830.....63	61-300.....30	61-719.....32	62-245.....70	66-502.....71	67-5036.....11	75-095.....70
57-942.....57	61-6001.....20	61-720.....29	62-250.....70	66-503.....71	67-5037.....11	75-100.....70
57-943.....57	61-6004.....34	61-721.....29	62-270.....70	66-504.....71	68-001.....72	75-105.....70
57-944.....57	61-6005.....34	61-722.....31	62-280.....70	66-506.....71	68-0011.....72	75-110.....70
57-945.....57	61-6005-1.....34	61-724.....17, 31	62-310.....70	66-508.....71	68-0012.....72	75-115.....70
58-211.....84	61-6006.....34	61-725.....17, 31	62-390.....70	66-509.....71	68-002.....72	75-120.....70
58-212.....84	61-6011.....20	61-727.....37	62-400.....70	66-512.....71	68-0021.....72	75-125.....70
58-221.....84	61-6012.....20	61-730.....17, 20, 29	62-457.....70	66-520.....71	68-0022.....72	75-130.....70
58-222.....84	61-6021.....20	61-733.....29	62-465.....70	66-530.....71	68-003.....72	75-135.....70
58-223.....84	61-6024.....33	61-735.....17, 20, 29	62-477.....70	66-6275.....70	68-0031.....72	75-140.....70
58-224.....84	61-6031.....22	61-740.....17, 20, 29	62-480.....70	66-700.....80	68-0032.....72	75-145.....70
58-225.....84	61-60313.....24	61-748.....29	62-487.....70	66-754.....85	68-004.....72	75-150.....70
58-231.....84	61-6041.....22	61-750.....17, 20, 29	62-490.....70	66-757.....85	68-0041.....72	75-155.....70
58-232.....84	61-60413.....24	61-751.....29	62-500.....70	66-809.....2, 50	68-005.....72	75-160.....70
58-233.....84	61-6042.....22	61-752.....29	62-510.....70	66-810.....2, 50	68-006.....72	75-165.....70
58-234.....84	61-60423.....24	61-755.....31	62-600.....70	66-812.....2, 50	68-010.....73	75-170.....70
58-235.....84	61-6051.....22	61-756.....30	63-001.....27	66-814.....2, 50	68-0109.....73	75-175.....70
58-237.....84	61-60513.....24	61-757.....30	63-002.....27	66-816.....50	68-012.....73	75-180.....70
58-238.....84	61-6701.....21	61-7705.....1, 35	63-120.....4	66-818.....2, 50	68-0129.....73	75-185.....70
58-239.....84	61-6711.....21	61-7724.....33	63-121.....4	66-820.....2, 50	68-015.....73	75-190.....70
58-240.....84	61-6712.....21	61-7731.....18	63-130.....4	66-830.....2, 50	68-0159.....73	75-195.....70
58-244.....73	61-6717.....21	61-77313.....19	63-132.....4	66-832.....2, 50	69-000.....5	75-200.....70
58-245.....73	61-6721.....21	61-7741.....18	63-225.....5, 11, 36, 37	66-834.....2, 50	69-001.....26	75-205.....70
58-250.....84	61-6724.....33	61-77413.....19	63-230.....5, 11, 36, 37	66-836.....2, 50	69-003.....5, 37	75-210.....70
60-000.....81	61-6731.....23	61-7742.....18	63-240.....5, 11	66-838.....2	69-006.....5, 37	75-220.....70
60-003.....81	61-67313.....25	61-77423.....19	63-270.....28	66-840.....2, 50	69-007.....5	75-225.....70
60-005.....81	61-6741.....23	61-7751.....18	63-604.....36, 37	66-850.....50	69-008.....5	75-230.....70
60-008.....81	61-67413.....25	61-77513.....19	63-605.....36	66-852.....50	69-009.....5	75-235.....70
60-009.....81	61-6742.....23	61-790.....29	63-71012.....1, 31	66-854.....50	69-2001.....4	75-240.....70
60-010.....81	61-67423.....25	61-791.....55	63-71024.....1, 31	66-856.....50	69-2004.....37	75-250.....70
60-020.....81	61-6751.....23	61-792.....55	63-71036.....1, 31	66-858.....50	69-2005.....37	75-260.....70
60-030.....81	61-67513.....25	61-793.....55	63-71048.....1, 31	66-860.....50	69-2031.....6	75-270.....70
60-039.....81	61-691.....30	61-794.....55	63-71060.....1, 31	66-908.....85	69-2231.....8	75-280.....70
60-040.....81	61-692.....30	61-795.....55	63-722.....1, 31	66-920.....85	69-3011.....4	75-290.....70
61-101.....80	61-693.....30	61-903.....33	64-010.....83	66-925.....85	69-3012.....4	75-300.....70
61-103.....80	61-694.....30	61-9790.....55	64-015.....83	66-936.....85	69-3016.....4	75-310.....70
61-105.....80	61-697.....32	61-9795.....55	64-020.....57, 83	66-937.....85	69-3017.....4	75-320.....70
611-096.....26	61-698.....30	62-070.....70	64-076.....82	66-938.....85	69-3041.....6	75-330.....70
611-099.....27	61-699.....30	62-075.....70	64-077.....82	66-9381.....85	69-3042.....6	75-340.....70
611-100.....27	61-7001.....14	62-080.....70	64-078.....82	66-939.....43	69-3046.....6	75-350.....70
611-102.....1, 27	61-701.....30	62-085.....70	64-087.....82	66-940.....43	69-3047.....7	75-360.....70
611-106.....28	61-7011.....14	62-090.....70	64-088.....82	66-945.....43	69-3241.....8	75-370.....70
611-6000.....21	61-7012.....14	62-095.....70	64-140.....84	67-000.....11	69-3242.....8	75-380.....70
611-6001.....26	61-7016.....1, 14	62-100.....70	64-146.....77	67-001.....11, 26	69-3246.....8	75-390.....70
611-6002.....26	61-7017.....15	62-105.....70	64-148.....77	67-003.....11, 36	69-3247.....9	75-400.....70
611-6003.....21	61-702.....30	62-110.....70	64-149.....77	67-005.....11	69-4021.....5	75-410.....70
611-6004.....34	61-7021.....15	62-115.....70	64-157.....77	67-006.....11, 36	69-4026.....5	75-420.....70
611-6005.....34	61-7024.....33	62-120.....70	64-158.....77	67-007.....11	69-4027.....5	75-430.....70
611-6006.....21	61-7026.....15	62-125.....70	64-169.....77	67-008.....11	69-4051.....7	75-440.....70
611-6007.....21	61-7031.....16	62-130.....70	64-175.....82	67-009.....11	69-4056.....7	75-600.....70



# Terms and Conditions

## Returns

To make sure that the item(s) get quickly processed, please follow these simple steps.

1. Call and request an RMA (Returned Merchandise Authorization) number for the merchandise you wish to return. All products must be returned in an unaltered / unchanged state from its original condition. Products must be no older than one year old, or two years old for scales. New parts returned for credit must be completely unaltered, and in new condition. Warranty parts will be inspected to see if failure was caused by misuse of the part, and possibly deemed not returnable.

2. Include your contact information, and the problem with the part in a note inside the box. Please write RMA number on the outside of the box.

3. Custom parts are not returnable for credit, but can sometimes be repaired.

## Printing Disclaimer...

QuickCar Racing Products reserves the right to update, change or modify any product or policy deemed necessary without notice. Every effort has been made to avoid printing errors, in this catalog and previous versions. We disclaim any responsibility for application or specifications.

## Disclaimer of Warranty

QuickCar Racing Products makes no warranties...

QuickCar Racing Products makes no written, oral, expressed, or implied statement of warranty or guarantee on any product sold, other than for defects in materials or workmanship as stated previously. QuickCar Racing Products will not assume liability for personal or property damage resulting from the use or misuse of any product we manufacture or sell, whether on the street or on the race track. Purchase and/or use of these products implies recognition and acceptance of this entire warranty and disclaimer by customer.

## Warranty

Parts are backed by a full one-year warranty against factory defects in workmanship and materials. All warranty parts will be inspected upon arrival for misuse. Scales are backed by a two-year warranty against factory defects in workmanship and materials. QuickCar Racing Products reserves the right to decline any warranty items if it appears that the item has failed due to misuse, or lack of care taken while the product was in use.

## ORDERING INFORMATION:

To Order by Phone: Monday Through Friday

8:00 to 5:00 Central Time

800-99-Speed (800-997-7333) or 615-453-2120

By Fax 24 Hours a Day: 615-453-2130

By E-Mail: Sales@Quickcar.com

Web: [www.quickcar.com](http://www.quickcar.com)

To Locate a Dealer Near You, Please Call 800-99-Speed

## SHIPPING OPTIONS:

- UPS Ground (1-6 working Days)
- UPS Blue (2 Working Days)
- UPS Red (1 Working Day)

**Please note that products cannot be shipped by UPS to a P.O. Box. Freight charges are FOB Lebanon, TN.**



**WARNING! Cancer and Reproductive Harm. [www.p65warnings.ca.gov/](http://www.p65warnings.ca.gov/)**

Some products in this catalog contain materials listed under California Proposition 65.

For additional details on specific products, visit the QuickCar website at [www.quickcar.com](http://www.quickcar.com)

For additional information on Proposition 65, visit [www.p65warnings.ca.gov/](http://www.p65warnings.ca.gov/)



QRP100



170 BUSINESS PARK DRIVE. LEBANON TN 37090

1-800-99-SPEED

[WWW.QUICKCAR.COM](http://WWW.QUICKCAR.COM)